

22/25/30/35BH-9

Electric Counterbalance Trucks

HYUNDAI FORKLIFT



 **HYUNDAI**
FORKLIFT

Your satisfaction is **our priority!**

Hyundai introduces a new line of 9-series battery forklift trucks.

The newly designed four-wheel counterbalance trucks provide operator comfort, increased productivity and easy maintenance.



Photos may include optional equipment.

Proven quality and advanced technology

- Maximum performance
- Spacious operator cab
- Side loading battery system
- Curved control panel
- Mini levers for fingertip control (optional)
- Weight indicator (optional)
- Overload safety system (optional)



High efficiency, optimal performance



Optional operating control levers improve efficiency

The electronic directional control and secondary horn are mounted to the hydraulic lift lever for quick and precise maneuvering.



Optional fingertip control levers

The levers allow more precise control and reduce fatigue. The ergonomically designed armrest can be adjusted up, down, forward and backward to fit various operators.

*Photos may include optional equipment.



Advanced drive and lift performance with proven durability and low maintenance

The enclosed drive and pump AC motor combines power, long maintenance intervals and excellent durability. The brushless AC motor improves efficiency and reduces maintenance costs.

Efficient, smooth and powerful performance provides increased productivity.

22/25/30/35BH-9



Photos may include optional equipment.

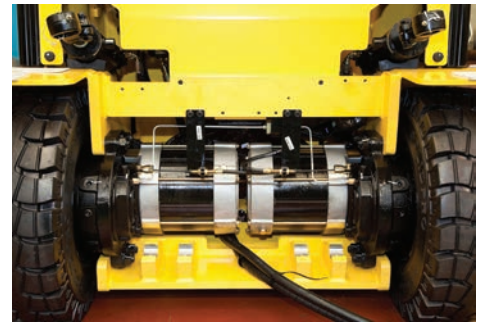
Curve control

Curve control limits travel speed based on turning radius to reduce speed for smooth, precise turning for the operator.



Driving Speed

Limit the speed



Dual drive system

A dual drive system minimizes aisle width and energy consumption. Plus, the drive units and AC motor integrated into the front axle provide greatly improved gradient capacity.



Auto fork leveling system (optional)

In order to improve productivity the auto fork leveling system will automatically stop the tilt movement when the mast is in a straight position.



Maximum loaded gradeability

Model	%
22BH-9	28
25BH-9	26
30BH-9	22
35BH-9	19

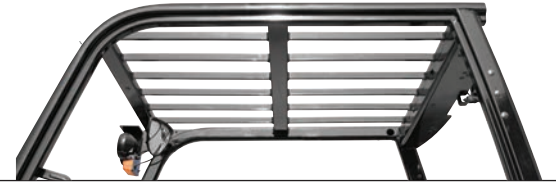
Maximum unloaded travel speed

Model	mph
22BH-9	11.8
25BH-9	11.8
30BH-9	11.8
35BH-9	11.8

Anti roll-back system, travel speed and gradeability

The anti roll-back system offers protection against the machine rolling back on a ramp and provides exceptional ramp start capabilities.

Advanced **safety**



*Photos may include optional equipment.

Excellent visibility, safe operation

The optimized lift cylinder arrangement provides greater visibility for the operator.



Panoramic mirror

The panoramic mirror expands the operator's view when backing up.

Strong overhead guard

Exceeding CE and ASME/ANSI B56.1 regulations, the overhead guard offers optimal protection and all-around visibility.

The operator cab is designed for improved safety and comfort.

22/25/30/35BH-9

Fork safety features

When the forks are being lowered, a down-control valve maintains the controlled speed. The down-safety valve prevents forks from dropping down and causing sudden damage to the hydraulic line.

Operator presence sensing system (OPSS)

All mast and drive movements stop functioning when the operator is not in the seat.

Lift Lock **Tilt Lock** **Drive Lock**

*Photos may include optional equipment.



Safety lamps and rear reflectors

Halogen headlights and rear LED combination lights provide greater visibility in all conditions. Rear reflectors mounted on the counterweight enhance operator and job site safety.

Optimized for fast, **easy maintenance**



Spacious cab

The newly designed cab provides more space, a wider field of view and improved operator comfort.

*Photos may include optional equipment.



Optimized pedal position

The accelerator and brake are positioned for optimal ergonomics.



Large entrance step

The wide, non-slip step provides a safer, more convenient entrance and exit.



Adjustable steering wheel

The angle of the steering wheel can be adjusted by a right-hand lever to set the most comfortable position for the operator.



Grammer seat (optional)

An easily adjustable ergonomic seat provides unmatched comfort and reduces operator fatigue.

Components are arranged for easy service and maintenance access.

22/25/30/35BH-9



*Photos may include optional equipment.

Easy battery replacement

The battery compartment features a side load design for easy removal and replacement.



Advanced LCD monitor

With the 3.5-inch wide LCD color monitor, the operator can control the machine with ease, while checking speed, travel direction, battery discharge, hour meter and working mode. The optional load indicator displays the load weight. The operator can select various performance modes for all working conditions. The monitor is available in up to 12 languages.

H (High) mode **N** (Normal) mode **E** (Economic) mode
Turtle mode



Brake oil reservoir with level sensor

The enhanced brake oil reservoir located in the upper left corner of the dash, is equipped with an easily visible electronic level sensor.

New 9 Series

Mast specifications (22/25/30BH-9)

Mast Type		Maximum Fork Height (mm)	Overall Height Lowered (mm)	Free Lift Height (mm)			Tilt Angle (deg) Fwd / Bwd	Load Capacity Without Side Shift (500 mm LC) (kg)			Load Capacity With Side Shift (500 mm LC) (kg)			Truck Weight Unloaded (kg)					
				22/25/30BH-9	22/25/30BH-9	22/25/30BH-9		22/25BH-9	30BH-9	22/25/30BH-9	22BH-9	25BH-9	30BH-9	22BH-9	25BH-9	30BH-9	22BH-9	25BH-9	30BH-9
2-stage limited free lift	V300	3005	2012	115	115	115	6 / 10	2200	2500	3000	2200	2500	3000	4536	4691	5109			
	V330	3305	2162	115	115	115	6 / 10	2200	2500	3000	2200	2500	3000	4555	4710	5130			
	V350	3505	2262	115	115	115	6 / 10	2200	2500	3000	2200	2500	3000	4572	4727	5148			
	V370	3705	2412	115	115	115	6 / 10	2200	2500	3000	2200	2475	3000	4594	4749	5172			
	V400	4005	2562	115	115	115	6 / 10	2200	2500	3000	2200	2425	3000	4616	4771	5196			
	V430	4305	2712	115	115	115	6 / 6	2200	2450	3000	2200	2375	3000	4665	4820	5246			
	V450	4505	2862	115	115	115	6 / 6	2200	2400	3000	2175	2325	2950	4695	4849	5277			
	V470	4705	2962	115	115	115	6 / 6	2200	2360	3000	2125	2285	2875	4709	4864	5293			
	V500	5005	3112	115	115	115	6 / 6	2150	2350	2900	2075	2275	2775	4731	4886	5317			
2-stage full free lift	VF295	2976	2012	832	1379	1317	6 / 6	2200	2500	3000	2200	2500	3000	4596	4751	5144			
	VF325	3276	2162	982	1529	1467	6 / 6	2200	2500	3000	2200	2500	2950	4629	4784	5176			
	VF345	3476	2262	1082	1629	1567	6 / 6	2200	2500	3000	2175	2475	2875	4665	4817	5209			
3-stage full free lift	TF370/TS370	3705	1812	632	1122	1117	6 / 6	2200	2500	3000	2200	2475	3000	4682	4837	5273			
	TF400/TS400	4005	1912	732	1222	1217	6 / 6	2200	2500	3000	2200	2425	3000	4702	4857	5294			
	TF430/TS430	4305	2012	832	1322	1317	6 / 6	2200	2450	3000	2200	2375	2950	4723	4878	5338			
	TF450/TS450	4505	2112	932	1422	1417	6 / 6	2200	2400	3000	2175	2325	2875	4744	4899	5343			
	TF470/TS470	4705	2162	982	1472	1467	6 / 6	2200	2350	2950	2125	2275	2825	4755	4910	5355			
	TF500/TS500	5005	2262	1082	1572	1567	6 / 6	2150	2300	2900	2075	2225	2775	4780	4935	5380			
	TF550/TS550	5505	2462	1282	1772	1767	6 / 6	2100	2200	2800	2025	2125	2675	4819	4974	5423			
	TF600/TS600	6005	2662	1482	1972	1967	6 / 6	2000	2150	2700	1925	2075	2575	4856	5011	5465			
	TF650/TS650	6505	2862	1682	2172	2167	3 / 3	1650	1800	2250	1575	1725	2125	4907	5062	5516			
TF700/TS700	7005	3062	1882	2372	2367	3 / 3	1200	1400	1850	1125	1325	1725	4946	5101	5555				
4-stage full free lift	QF610	6115	2147	967	1514	1452	3 / 3	1550	1650	1800	1475	1575	1675	5121	5276	5663			
	QF660	6615	2347	1167	1714	1652	3 / 3	1450	1550	1700	1375	1475	1575	5181	5336	5723			
	QF700	7015	2447	1267	1814	1752	3 / 3	1250	1300	1400	1175	1225	1275	5212	5366	5753			
	QF745	7465	2597	1417	1964	1902	3 / 3	1150	1200	1250	1075	1125	1125	5257	5412	5799			
	QF790	7915	2747	1567	2114	2052	3 / 3	700	750	750	625	675	625	5358	5513	5900			

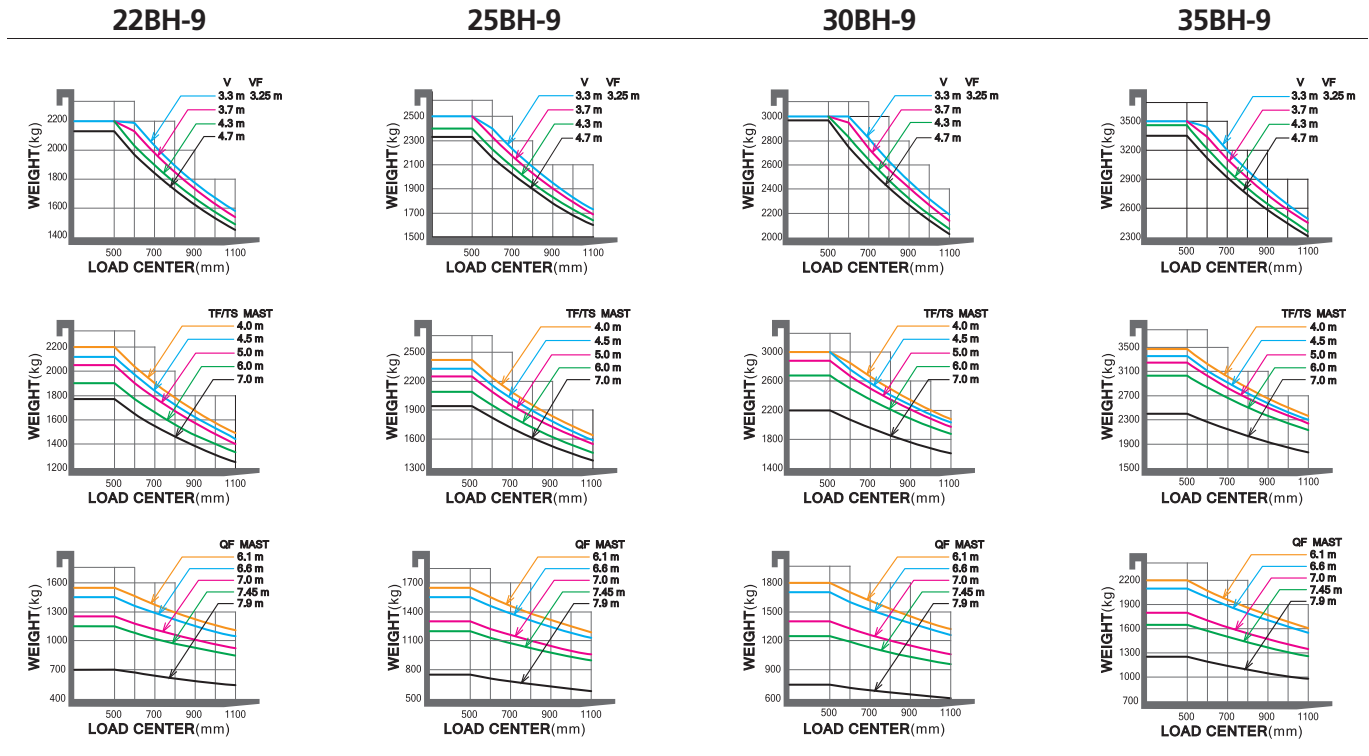
Mast specifications (35BH-9)

Mast Type		Maximum Fork Height (mm)	Overall Height Lowered (mm)	Free Lift Height (mm)		Tilt Angle (deg) Fwd / Bwd	Load Capacity Without Side Shift (500 mm LC) (kg)	Load Capacity With Side Shift (500 mm LC) (kg)	Truck Weight Unloaded (kg)		
				35BH-9	35BH-9					35BH-9	35BH-9
2-stage limited free lift	V300	3005	2093	115	115	6 / 10	3500	3500	5582		
	V330	3305	2243	115	115	6 / 10	3500	3500	5605		
	V350	3505	2343	115	115	6 / 10	3500	3500	5624		
	V370	3705	2493	115	115	6 / 10	3500	3500	5648		
	V400	4005	2643	115	115	6 / 10	3500	3430	5671		
	V430	4305	2793	115	115	6 / 6	3500	3350	5722		
	V450	4505	2943	115	115	6 / 6	3450	3300	5754		
	V470	4705	3043	115	115	6 / 6	3400	3250	5770		
	V500	5005	3193	115	115	6 / 6	3300	3150	5793		
2-stage full free lift	VF295	2976	2093	913	1377	6 / 6	3500	3500	5618		
	VF325	3276	2243	1063	1527	6 / 6	3500	3430	5651		
	VF345	3476	2343	1163	1627	6 / 6	3500	3350	5684		
3-stage full free lift	TF370/TS370	3705	1893	713	1177	6 / 6	3500	3430	5780		
	TF400/TS400	4005	1993	813	1277	6 / 6	3500	3350	5804		
	TF430/TS430	4305	2093	913	1377	6 / 6	3450	3300	5832		
	TF450/TS450	4505	2193	1013	1477	6 / 6	3400	3250	5856		
	TF470/TS470	4705	2243	1063	1527	6 / 6	3350	3200	5873		
	TF500/TS500	5005	2343	1163	1627	6 / 6	3300	3150	5895		
	TF550/TS550	5505	2543	1363	1827	6 / 6	3150	3000	5940		
	TF600/TS600	6005	2743	1563	2027	6 / 6	3100	2950	5983		
	TF650/TS650	6505	2943	1763	2227	3 / 3	2600	2450	6034		
TF700/TS700	7005	3143	1963	2427	3 / 3	2200	2050	6073			
4-stage full free lift	QF610	6115	2158	1017	1459	3 / 3	2500	2350	6607		
	QF660	6615	2358	1217	1659	3 / 3	2400	2250	6667		
	QF700	7015	2458	1317	1759	3 / 3	2100	1950	6697		
	QF745	7465	2608	1467	1909	3 / 3	1950	1800	6743		
	QF790	7915	2758	1617	2059	3 / 3	1450	1300	6843		

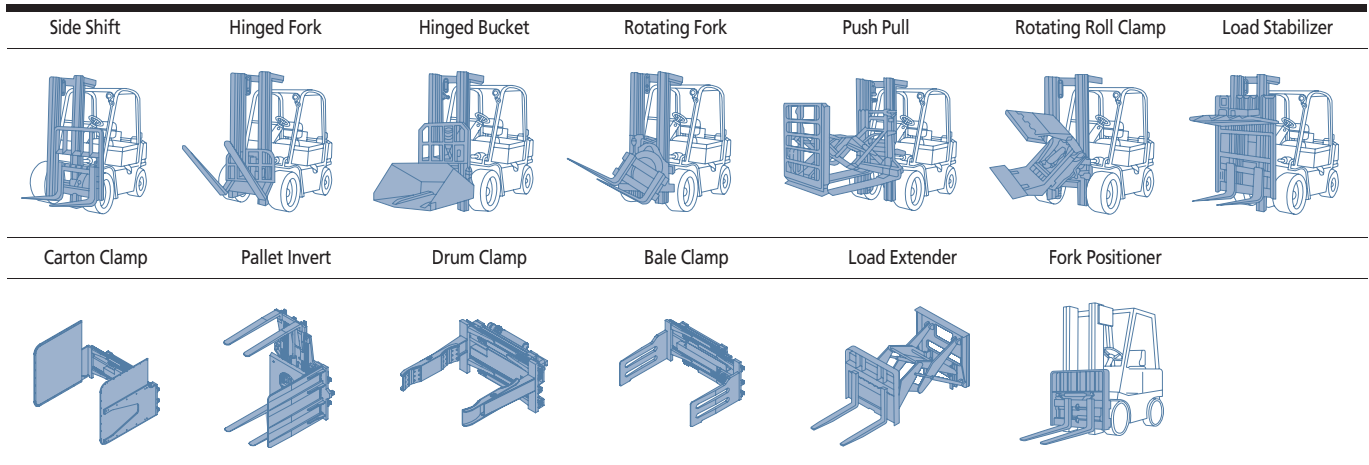
TS-Mast: wide visible 3-stage full free lift mast with 2 free lift cylinders.

* Standard

Load capacity



Various attachments

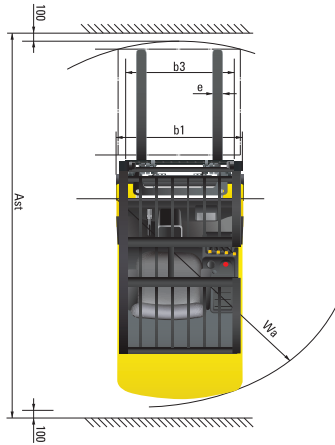
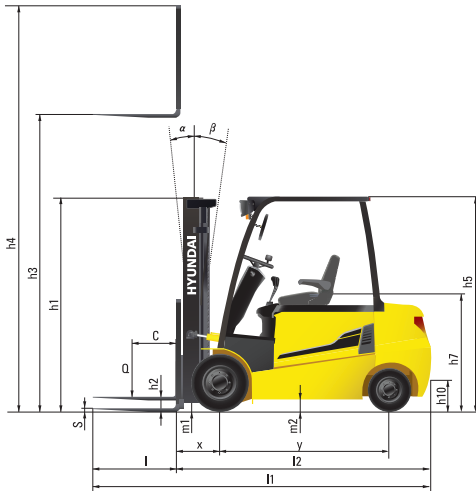


Options

- Fork (mm)
22 / 25BH-9: 900, 1000, 1050(STD), 1200, 1350, 1500, 1650, 1800
30 / 35BH-9: 900, 1050(STD), 1150, 1200, 1650, 1800, 1970, 2120, 2300, 2400
- Overshoe (mm)
22 / 25BH-9: 1300, 1500, 1700, 1800
30 / 35BH-9: 1500, 1700, 1800
- Integral side-shift
- Tire: Solid (standard) / Pneumatic / Non-marking
Wide tire [22/25/30BH-9: Front tire (23x10-12)]
- Seat: Grammer

- Finger tip control
- Cold storage (for -30 degree working environments)
- M.C.V : 2-spool (standard), 3-spool, 4-spool
- Auto fork leveling
- Beacon lamp
- Load indicator
- Work lamp
- OPSS: Mast
- UL : ES, EE
- Cabin
- Direction switch on lever

Dimensions



II / A

Specifications

Identification		HYUNDAI			
1. 1	Manufacturer	HYUNDAI			
1. 2	Manufacturer's model designation	22BH-9	25BH-9	30BH-9	35BH-9
1. 3	Drive: electric (battery or mains), diesel, petrol, fuel gas, manual	Electric	Electric	Electric	Electric
1. 4	Type of operation: hand, pedestrian, standing, seating, order-picker	Seated	Seated	Seated	Seated
1. 5	Load capacity / rated load	Q kg	2,200	2,500	3,000
1. 6	Load center distance	c mm	500	500	500
1. 8	Load distance, center of drive axle to fork	x mm	458	458	470
1. 9	Wheelbase	y mm	1,575	1,575	1,719

Weights					
2. 1	Service weight	kg	4,555	4,710	5,130
2. 2	Axle loading, loaded front / rear	kg	5,880 / 875	6,340 / 870	7,237 / 893
2. 3	Axle loading, unloaded front / rear	kg	2,345 / 2,210	2,320 / 2,390	2,565 / 2,565

Wheels, Chassis					
3. 1	Tires: solid rubber (V), superelastic (SE), pneumatic (P), polyurethane (PE)	SE, P	SE, P	SE, P	SE, P
3. 2	Tire size, front (Φ x width)	23 x 9 - 10	23 x 9 - 10	23 x 9 - 10	23 x 10 - 12
3. 3	Tire size, rear (Φ x width)	18 x 7 - 8	18 x 7 - 8	18 x 7 - 8	18 x 7 - 8
3. 5	Wheels, number front rear (x = driven wheels)	2 x / 2	2 x / 2	2 x / 2	2 x / 2
3. 6	Track width, front	mm	993	993	1005
3. 7	Track width, rear	mm	980	980	980

Basic Dimensions					
4. 1	Mast / fork carriage tilt forward / backward	degrees	6/8	6/8	6/8
4. 2	Lowered mast height	h1 (mm)	2,162	2,162	2,162
4. 3	Free lift height	h2 (mm)	115	115	115
4. 4	Lift height	h3 (mm)	3,305	3,305	3,305
4. 5	Extended mast height	h4 (mm)	4,485	4,485	4,485
4. 7	Overhead guard (cab) height	h5 (mm)	2,210	2,210	2,210
4. 8	Seat height / Standing height	h7 (mm)	1,118	1,118	1,118
4. 12	Coupling height	h10 (mm)	396	396	396
4. 19	Overall length	l1 (mm)	3,385	3,415	3,545
4. 20	Length to face of forks	l2 (mm)	2,335	2,365	2,495
4. 21	Overall width	b1 (mm)	1,195	1,195	1,245
4. 22	Fork dimensions	l / e / s (mm)	1050x100x45	1050x100x45	1050x122x45
4. 23	Fork carriage ISO 2328, class / type A, B		II / A	II / A	III / A
4. 24	Fork - carriage width	b3 (mm)	1,102	1,102	1,102
4. 31	Ground clearance, loaded, under mast	m1 (mm)	117	117	128
4. 32	Ground clearance, center of wheelbase	m2 (mm)	116	116	116
4. 33	Aisle width for pallets 1,000 x 1,200 crossways	Ast (mm)	3,516	3,516	3,664
4. 34	Aisle width for pallets 800 x 1,200 lengthways	Ast (mm)	3,694	3,694	3,851
4. 35	Turning radius	Wa (mm)	1,895	1,925	2,055
4. 36	Smallest pivot point distance	(mm)	-	-	-

Performance Data					
5. 1	Travel speed, loaded / unloaded (80V)	km / h	18 / 19	18 / 19	18 / 19
5. 2	Lift speed, loaded / unloaded (80V)	mm / s	420 / 600	410 / 600	340 / 500
5. 3	Lowering speed, loaded / unloaded	mm / s	500 / 450	500 / 450	500 / 450
5. 6	Max. drawbar pull, loaded / unloaded S2 5 min	N	18,810 / 17,777	18,022 / 17,767	17,865 / 17,747
5. 8	Max. gradient performance, loaded / unloaded S2 5 min	%	28 / 26	26 / 24	22 / 24
5. 10	Service brake		Hydraulic	Hydraulic	Hydraulic

E - Motor					
6. 1	Drive motor rating S2 60 min (80V)	kW	8.0 x 2	8.0 x 2	8.0 x 2
6. 2	Lift motor rating at S3 20% (S2 10 min)	kW	19.7	19.7	19.7
6. 4	Battery voltage, nominal capacity K5	Ah	80 / 500	80 / 500	80 / 600
6. 5	Battery weight	kg	1,470	1,470	1,780
	Battery compartment dimensions L / W / H	mm	1,029 / 714 / 827	1,029 / 714 / 827	1,029 / 858 / 827

Other Details					
8. 1	Type of drive control		AC	AC	AC



Hyundai Construction Equipment Americas, Inc.
6100 ATLANTIC BOULEVARD NORCROSS GA 30071 U.S.A
TEL (678) 823-7777 / FAX (678) 823-7778