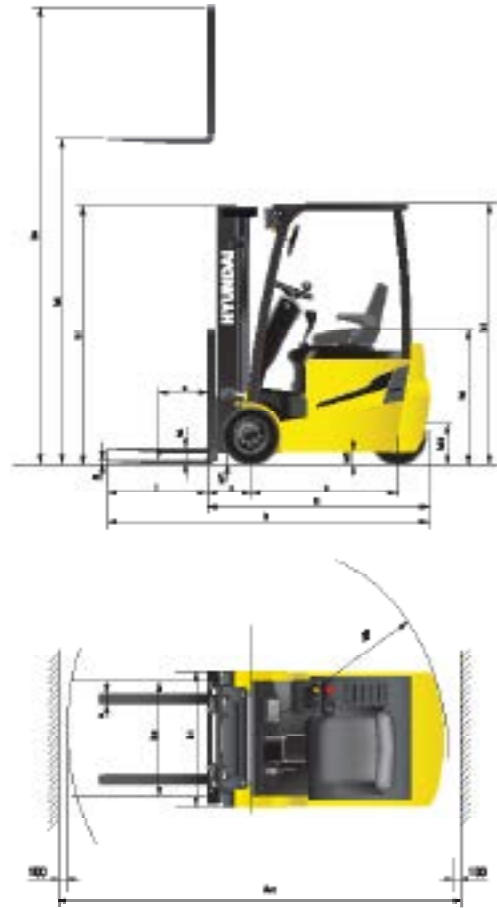


Dimension



Specification

Identification					
1.1	Manufacturer		HYUNDAI		
1.2	Manufacturer's type designation		10BTR-9	13BTR-9	15BTR-9
1.3	Drive: electric (battery or mains), diesel, petrol, fuel gas, manual		Electric	Electric	Electric
1.4	Type of operation: hand, pedestrian, standing, seated, order-picker		Seated	Seated	Seated
1.5	Load capacity / rated load	Q lb	2,204	2,756	3,307
1.6	Load center distance	c in	24	24	24
1.8	Load distance, center of drive axle to fork	x in	13	13	13
1.9	Wheelbase	y in	42	46	48
Weights					
2.1	Service weight	lb	5,302	5,798	2,840
2.2	Axle loading, loaded front / rear	lb	6,382 / 1,124	7,363 / 1,191	8,322 / 1,246
2.3	Axle loading, unloaded front / rear	lb	2,460 / 2,841	2,646 / 3,153	2,765 / 3,497
Wheels, Chassis					
3.1	Tires: solid rubber(V), superelastic(SE), pneumatic(P), polyurethane(PE)		SE	SE	SE
3.2	Tires size, front(Φ x width)		18 x 7-8	18 x 7-8	18 x 7-8
3.3	Tires size, rear(Φ x width)		18 x 7-8	18 x 7-8	18 x 7-8
3.5	Wheels, number front/rear(x = driven wheels)		2 / 1x	2 / 1x	2 / 1x
3.6	Track width, front	in	33	33	33
3.7	Track width, rear	in	-	-	-
Basic Dimensions					
4.1	Mast / fork carriage tilt forward / backward	degrees	5 / 6	5 / 6	5 / 6
4.2	Lowered mast height	h1 in	78	78	78
4.3	Free lift height	h2 in	1.4	1.4	1.4
4.4	Lift height	h3 in	119	119	119
4.5	Extended mast height	h4 in	158	158	158
4.7	Overhead guard (cab) height	h5 in	80	80	80
4.8	Seat height / Standing height	h7 in	36	36	36
4.12	Coupling height	h10 in	13	13	13
4.19	Overall length	l1 in	101	105	107
4.20	Length to face of forks	l2 in	65	69	71
4.21	Overall width	b1 in	39	39	39
4.22	Fork dimensions	s / e / l in	1.4 x 3.1 x 32	1.4 x 3.1 x 32	1.4 x 3.1 x 32
4.23	Fork carriage ISO 2328, class / type A, B		II	II	II
4.24	Fork - carriage width	b3 in	37	37	37
4.31	Ground clearance, loaded, under mast	m1 in	3.3	3.3	3.3
4.32	Ground clearance, centre of wheelbase	m2 in	3.5	3.5	3.5
4.33	Aisle width for pallets 1,000 x 1,200 crossways	Ast in	118	121	124
4.34	Aisle width for pallets 800 x 1,200 lengthways	Ast in	123	126	128
4.35	Turning radius	Wa in	53	56	58
4.36	Smallest pivot point distance	in	-	-	-
Performance Data					
5.1	Travel speed, loaded / unloaded (24V)	mph	7.8 / 8.1	7.8 / 8.1	7.8 / 8.1
5.2	Lift speed, loaded / unloaded (24V)	ft/min	61 / 104	59 / 104	57 / 104
5.3	Lowering speed, loaded / unloaded	ft/min	98 / 89	98 / 89	98 / 89
5.6	Max. drawbar pull, loaded / unloaded S2.5 min	N	642 / 690	631 / 685	620 / 683
5.8	Max. gradient performance, loaded / unloaded S2.5 min	%	18 / 25	15 / 24	13 / 23
5.9	Acceleration time, loaded / unloaded	S	-	-	-
5.10	Service brake		Hydraulic	Hydraulic	Hydraulic
E - Motor					
6.1	Drive motor rating S2 60 min (24V)	kW	4.3	4.3	4.3
6.2	Pump motor rating at S3 - 15 % (24V)	kW	9.0	9.0	9.0
6.4	Battery voltage, nominal capacity K5 (24V)	V/Ah	24 / 625	24 / 750	24 / 750
6.5	Battery weight	lb	992	1,322	1,521
	Battery compartment dimensions L/W/H	in	33 / 13 / 25	33 / 17 / 25	33 / 19 / 25
Other Details					
8.1	Type of drive control		AC	AC	AC

10/13/15BTR-9

Electric Counterbalance Trucks

MOVING YOU FURTHER

HYUNDAI HEAVY INDUSTRIES



HYUNDAI | FORKLIFT
CONSTRUCTION EQUIPMENT AMERICAS, INC.

6100 Atlantic Blvd Norcross, GA 30071
TEL (678) 823 7777 FAX (678) 823 7778



PLEASE CONTACT

www.hyundai-ce.com

2013. 07 Rev. 0

HYUNDAI
CONSTRUCTION EQUIPMENT AMERICAS, INC.

Your satisfaction is our priority!

Hyundai introduces a new line of 9-series battery forklift trucks.

The newly designed 3 wheel counterbalance trucks with rear wheel drive provide every operator comfortable driving, increased productivity and easy maintenance.

Compact forklift with proven AC technology

- Maximum performance
- Spacious operator's cab
- Wet brakes standard
- Battery side loading system available
- Load Indicator System
- Fingertip controlled mini levers available (optional)
- Safety system that prevents over loading (optional)



reddot design award
honourable mention 2012



■ Some of the photos may include optional equipment.

High Efficiency & Optimal Performance



Efficient, smooth running and compact design provide you with enhanced performance and highest productivity.

10/13/15BTR-9



More efficient operating control levers

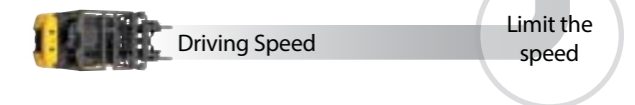
Electronic directional control and secondary horn are mounted to the hydraulic lift lever for quick and precise maneuvering. (Optional)



■ Some of the photos may include optional equipment.

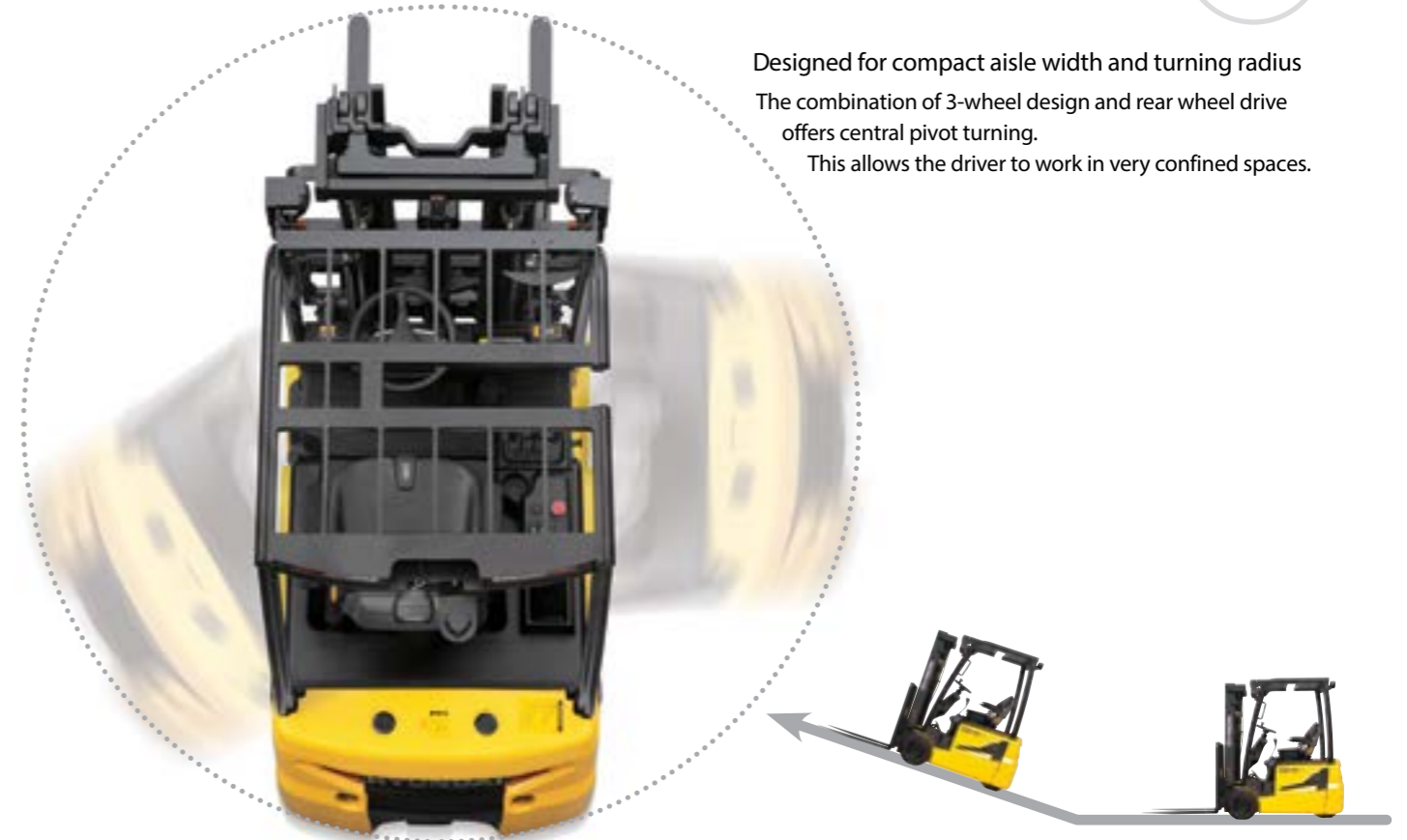
Curve control

Curve Control limits travel speed based on turning radius, reducing speed for a smooth, precise turning operation for the driver.



Designed for compact aisle width and turning radius

The combination of 3-wheel design and rear wheel drive offers central pivot turning. This allows the driver to work in very confined spaces.



■ Some of the photos may include optional equipment.



Advanced drive and lift performance with proven durability and low maintenance

The enclosed drive and pump motor with AC technology combine power, high maintenance intervals and excellent durability. The ZF transmission converts the drive engine's power to any direction the driver requires.

Travel Speed (MAX)

Model	mph
10BTR-9	8
13BTR-9	8
15BTR-9	8

Gradeability (MAX)

Model	%
10BTR-9	18
13BTR-9	15
15BTR-9	13

Anti roll back system, travel speed and gradeability

Anti Roll-back system offers protection against the machine rolling back on a ramp in combination with exceptional ramp start capabilities.

Advanced Safety

The safely designed driver's space makes your operating more comfortable.

10/13/15BTR-9



■ Some of the photos may include optional equipment.

Excellent visibility for safe operation
Optimized lift cylinder arrangement provides operator with wider visibility.
The panoramic mirror expands the driver's view when backing up.



Fork safety features
When the forks are being lowered, a down-control valve maintains the controlled speed. The down-safety valve prevents forks from dropping down in case of sudden damage of hydraulic line.

OPSS(Operator Presence Sensing System)
When the operator is not in the seat all mast and drive movements are impossible.

Lift Lock Tilt Lock Drive Lock

■ Some of the photos may include optional equipment.



Strong overhead guard
Exceeding CEE and ANSI regulations, the overhead guard offers great protection combined with excellent all round visibility



Safety lamps & rear reflectors
Halogen headlights and rear LED combination lights offer the driver visibility in all circumstances. Rear reflectors mounted on the counterweight enhance safety for the driver and the application.

Optimised Ergonomics & Fast and Easy Maintenance



An ideal arrangement of components ensures easy access and convenience for maintenance.

10/13/15BTR-9



■ Some of the photos may include optional equipment.

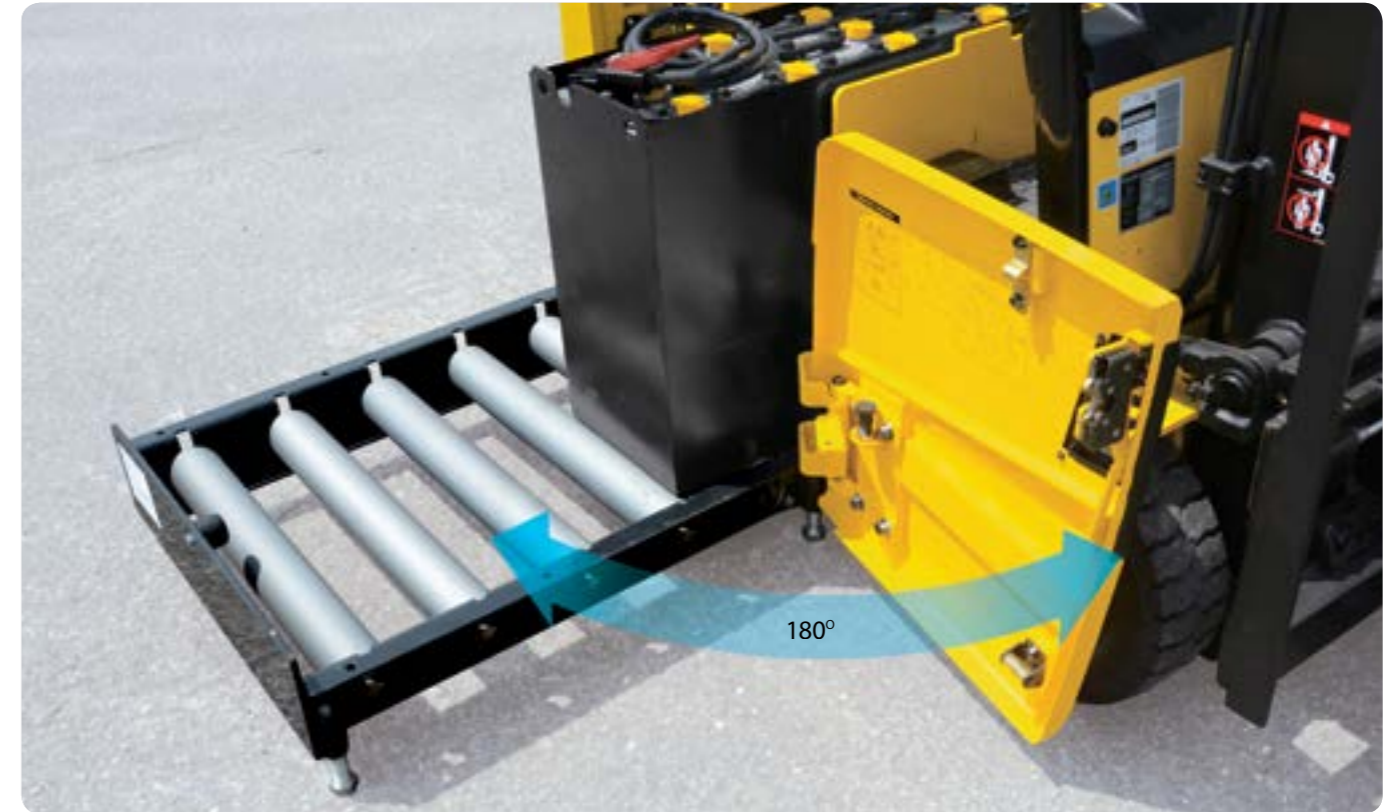
Grammer seat

An easily adjustable full suspension seat, based on a human engineering design, provides greater comfort reducing operator fatigue.



Spacious operator cabin

The BTR is designed as a small, compact design, yet the operator compartment has ample room for virtually any operator.



■ Some of the photos may include optional equipment.

Easy battery replacement

The battery compartment is equipped with a side battery removal assembly for easy removal and replacement.



Low entrance height

In order to get in and out of the cabine in an easy and safe way the height of the entrance step is only 16in high.



Adjustable steering wheel

To achieve a comfortable drive position, the angle of the steering column can easily be adjusted through a lever on the right-hand side of the steering column.



Optimized pedal position and floor mat

The position of accelerator and throttle have been optimized through human engineering.



Advanced LCD Monitor

The LCD monitor with 3.2 inch graphic smart display allows the operator to easily and efficiently control the machine. The monitor provides information about speed & accelerator level, steer angle & travel direction, battery discharge indicator, hour meter & working mode. The optional load indicator displays the load weight in the monitor. The operator can select various performance modes to meet all working conditions.

- H (High) mode
- N (Normal) mode
- E (Economic) mode
- Turtle mode (maintain 4 mph travel speed when lifting)



Brake oil reservoir with level sensor

The enhanced brake oil reservoir, located in the upper left dash, is equipped with an electronic level sensor and easily visible through the monitor.

New 9 Series

10/13/15BTR-9

Mast Specification (10/13BTR-9)

Mast Type	Maximum Fork Height (in)	Overall Height (Lowered) (in)	Free Lift Height (in)		Tilt Angle (deg) Fwd / Bwd	Load Capacity without side shift at (24in LC) (lb)		Load Capacity with side shift at (24in LC) (lb)		Truck Weight (Unloaded) (lb)		
			With Load Backrest	Without Load Backrest		10BTR-9	13BTR-9	10BTR-9	13BTR-9	10BTR-9	13BTR-9	
			10/13BTR-9	10/13BTR-9		10/13BTR-9	10/13BTR-9	10BTR-9	13BTR-9	10BTR-9	13BTR-9	
2-Stage Limited free lift	* V300	119	76	1.4	1.4	5 / 6	2,204	2,756	1,984	2,535	5,320	5,803
	V330	131	84	1.4	1.4	5 / 6	2,204	2,756	1,984	2,535	5,362	5,844
	V350	139	87	1.4	1.4	5 / 6	2,204	2,756	1,984	2,535	5,390	5,873
	V370	147	91	1.4	1.4	5 / 6	2,204	2,756	1,984	2,535	5,419	5,902
	V400	159	97	1.4	1.4	5 / 6	2,204	2,756	1,984	2,535	5,470	5,853
	V500	198	121	1.4	1.4	5 / 6	2,150	2,646	1,929	2,425	5,706	6,188
2-Stage full free lift	VF300	119	76	38	58	5 / 5	2,204	2,756	1,984	2,535	5,373	5,856
	VF330	131	84	44	63	5 / 5	2,204	2,756	1,984	2,535	5,419	5,902
	VF350	139	87	48	67	5 / 5	2,204	2,756	1,984	2,535	5,452	5,934
3-Stage full free lift	TF400/TS400	159	74	34	54	5 / 5	2,204	2,756	1,984	2,535	5,582	6,065
	TF430/TS430	171	76	38	58	5 / 5	2,204	2,700	1,984	2,480	5,624	6,107
	TF450/TS450	179	82	42	62	5 / 5	2,150	2,646	1,984	2,425	5,666	6,149
	TF470/TS470	186	84	44	64	5 / 5	2,094	2,590	1,929	2,370	5,688	6,171
	TF500/TS500	198	87	48	68	5 / 5	2,039	2,535	1,874	2,315	5,730	6,213
	TF550/TS550	218	95	56	75	5 / 5	1,984	2,425	1,818	2,260	5,814	6,296
TF600/TS600	238	103	64	83	5 / 5	1,874	2,315	1,709	2,150	5,937	6,420	

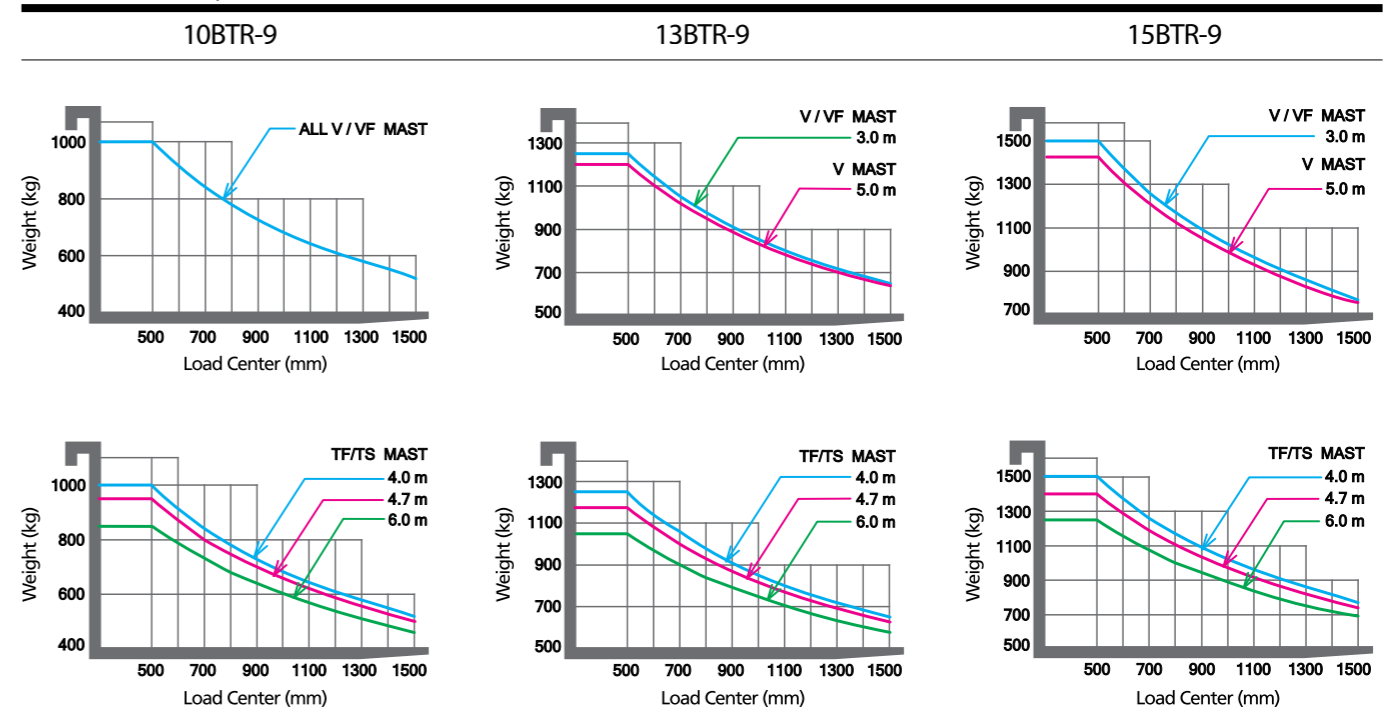
Mast Specification (15BTR-9)

Mast Type	Maximum Fork Height (in)	Overall Height (Lowered) (in)	Free Lift Height (in)		Tilt Angle (deg) Fwd / Bwd	Load Capacity without side shift at (24in LC) (lb)		Load Capacity with side shift at (24in LC) (lb)		Truck Weight (Unloaded) (lb)	
			With Load Backrest	Without Load Backrest		15BTR-9	15BTR-9	15BTR-9	15BTR-9	15BTR-9	
			15BTR-9	15BTR-9		15BTR-9	15BTR-9	15BTR-9	15BTR-9	15BTR-9	
2-Stage Limited free lift	* V300	119	78	1.4	1.4	5 / 6	3,307	3,031	3,031	6,263	
	V330	131	83	1.4	1.4	5 / 6	3,307	3,031	3,031	6,305	
	V350	139	87	1.4	1.4	5 / 6	3,307	3,031	3,031	6,334	
	V370	147	91	1.4	1.4	5 / 6	3,307	3,031	3,031	6,363	
	V400	158	97	1.4	1.4	5 / 6	3,307	3,031	3,031	6,396	
	V500	198	121	1.4	1.4	5 / 6	3,142	2,866	2,866	6,649	
2-Stage full free lift	VF300	119	78	38	57	5 / 5	3,307	3,031	3,031	6,316	
	VF330	131	83	44	63	5 / 5	3,307	3,031	3,031	6,362	
	VF350	139	87	48	67	5 / 5	3,307	3,031	3,031	6,395	
3-Stage full free lift	TF400/TS400	159	74	34	54	5 / 5	3,307	3,031	3,031	6,526	
	TF430/TS430	171	78	38	58	5 / 5	3,197	2,921	2,921	6,568	
	TF450/TS450	179	81	42	62	5 / 5	3,142	2,866	2,866	6,609	
	TF470/TS470	186	83	44	64	5 / 5	3,086	2,810	2,810	6,632	
	TF500/TS500	198	87	48	67	5 / 5	3,031	2,756	2,756	6,673	
	TF550/TS550	218	95	56	75	5 / 5	2,918	2,646	2,646	6,757	
TF600/TS600	238	103	64	83	5 / 5	2,756	2,535	2,535	6,881		

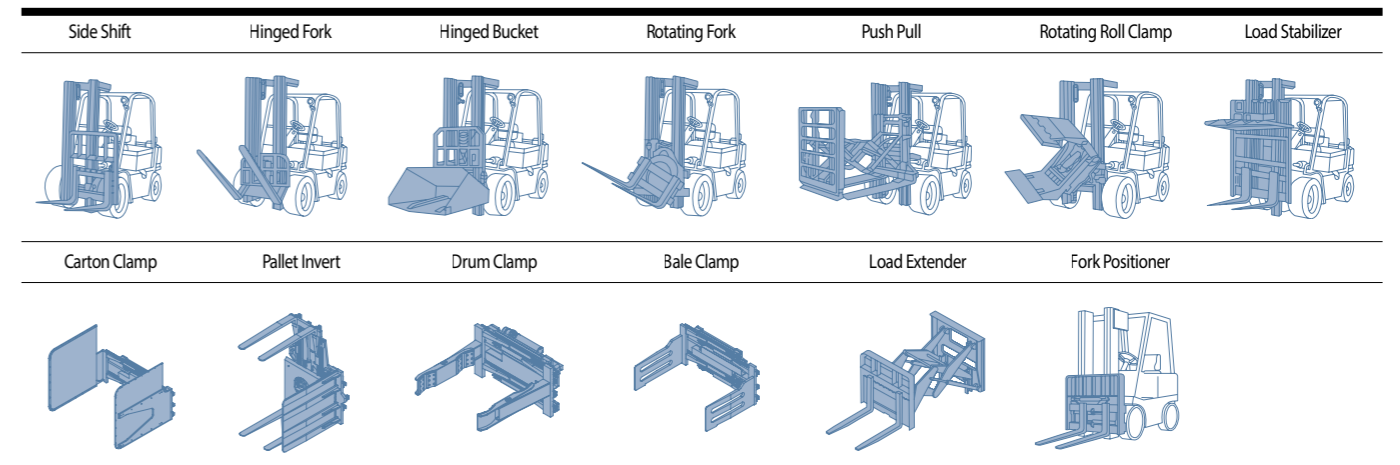
* TS-Mast : Wide Visible 3-Stage Full Free Lift Mast with 2 Free Lift Cylinders.

* Standard

Load Capacity



Various Attachments



Optional Items

- Mast
V330, V350, V370, V400, V500, VF300, VF330, VF350
TF/TS400, TF/TS430, TF/TS450, TF/TS470, TF/TS500, TF/TS550, TF/TS600
- Fork(in)
32 / 35 / 41 / 47 / 53 / 59
- Overshoe(in)
51 / 59 / 67
- Sideshift
- Integral Sideshift
- Tilting : 5° / 6°, 5° / 5°
- Tire : Non-marking

- Finger Tip Control
- Cold Storage
- M.C.V : 4-Spool
- Attach Piping : 3 Spool-piping, 4 Spool-piping
- Beacon Lamp
- Work Lamp
- OPSS : Travel + Mast