

25/30/33D-9 35DA-9

Diesel Counterbalance Trucks

MOVING YOU FURTHER

HYUNDAI MATERIAL HANDLING



■ Some of the photos may include optional equipment.

 **HYUNDAI**
MATERIAL HANDLING

Your satisfaction is **our priority!**

Hyundai introduces a new line of 9-series diesel forklift trucks.

The newly designed 4 wheel counterbalance trucks provide every operator comfortable driving, increased productivity and easy maintenance.



New Diesel Forklift with Proven Quality and Advanced Technology

- Maximum performance
- Spacious operator's cab
- Switch type parking brake
- 5.6 inch LCD color monitor
- Truck inclination warning system
- OPSS System for safe operation
- Easy serviceability
- Max speed limit function
- HAC (Hillstart-Assistance Control)
- Password starting system
- Auto fork leveling system (Optional)
- Load weight indicator



High Efficiency & Optimal Performance



■ Some of the photos may include optional equipment.



KUBOTA V3307 Engine 67 HP/2,300 rpm

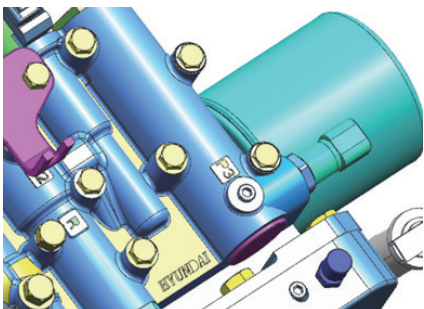
High Power Engine - KUBOTA V3307

Market approved quality of KUBOTA V3307 engine ensures incomparable performance, durability and excellent fuel efficiency.

This engine meets EPA Tier IV Final and EU stage IV B emission regulations.

A powerful engine + advanced component technology enhance operator performance for optimal productivity.

25/30/33D-9 35DA-9



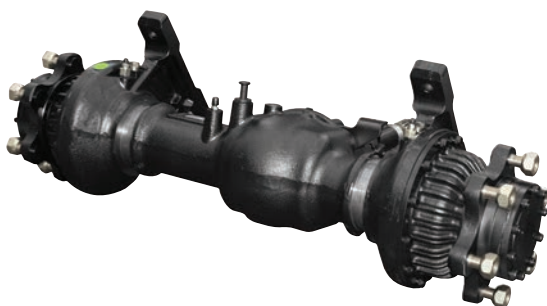
Clutch Protection System

The clutch protection system prevents excessive use of inching as well as minimizes change-impact.



Boosting Type Brake Valve (Optional)

The boosting type brake valve is applied for strong braking performance.



Highly Durable Drive Axle with Wet Disc Brakes

A strong drive axle separate from the transmission ensures low vibration and easy maintenance. The wet disc brake system is virtually maintenance free and the enclosed design protects from dust and water.



Fully Hydrostatic Power Steering

The hydraulic steering system always guarantees smooth and flexible steering, preventing over-run and kick-back.



Travel Speed (MAX)

Model	mph
25D-9	11.5
30D-9	12.4
33D-9	12.4
35DA-9	12.4

Gradeability (MAX)

Model	%
25D-9	40.7
30D-9	31.9
33D-9	28.3
35DA-9	27.1

Faster Travel Speed & Gradeability

The powerful high-output engine provides greater acceleration, better gradeability and faster travel speed on any tough terrain or slope.

Best Convenience & Optimized Ergonomics



Spacious Operator Cabin

The newly designed cabin provides wide visibility and spacious environment, ensuring all day comfort for the operator.



Optimized Pedal Position

On the 9-series the pedals are mounted to the console to reduce operator fatigue, and noise and dust from the engine compartment.



Adjustable Steering Wheel

To achieve a comfortable drive position, the angle of the steering column can easily be adjusted by a lever on the right-hand side of the steering column.



fingertip

Ergonomically designed fingertip control levers eliminates reaches and awkward shoulder. It gives operators comfortability and efficiency (optional).



Comfortable Grammer Seat

Easily adjustable suspension seat, provides great comfort, safety and durability.

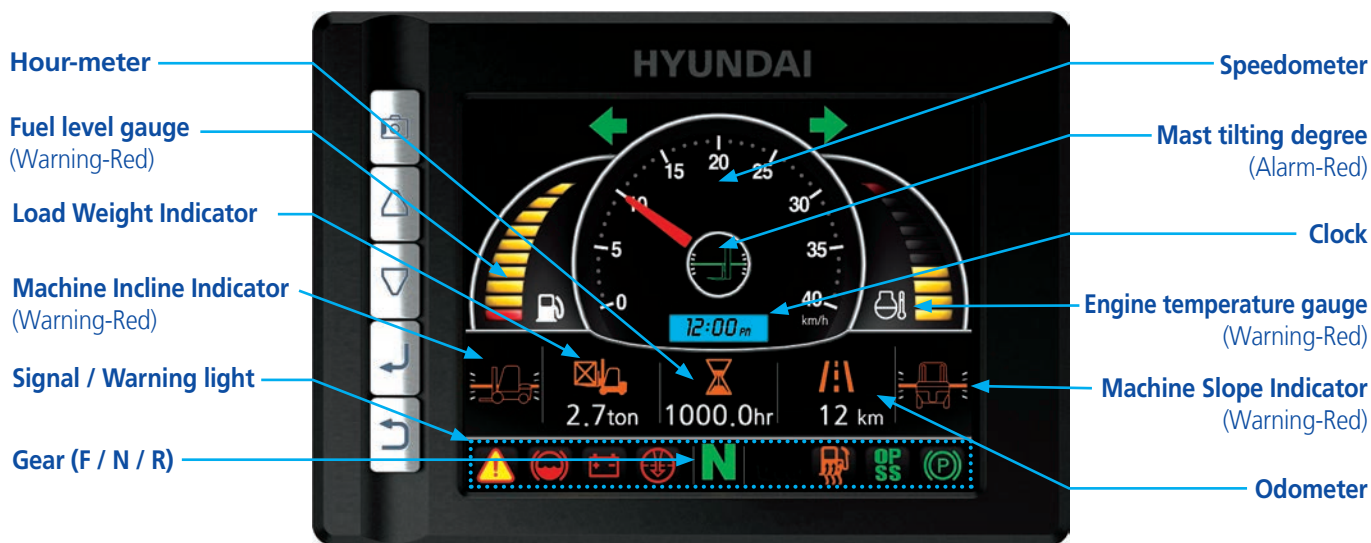
- *ELR (Energy Locking Retractor) Type Seat Belt
- *Heater and Head-rest (OPT)

The ergonomically designed cabin and the new style LCD color monitor provides full support and comfort to the operator.

25/30/33D-9 35DA-9

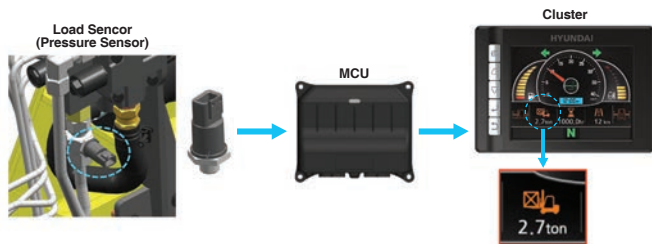
Advanced LCD Monitor

The 5.6 inch wide screen LCD color monitor allows the operator to control the machine with ease. The monitor features speed, travel direction, battery discharge indicator and hour meter.



Max Speed Limit System

- Safety function for the customer
- Maximum speed limit range : 4.9 - 12.4 mph (Selectable)
- Easy to set the function enabled and maximum speed value by the cluster
- Very smooth control (Travel speed reaches to the maximum speed smoothly)



Load Weight Indicator

The load weight indicator displays the load weight on the monitor. The load sensor reduces the time to check loaded weight and the alarm alerts the driver when overloaded.

Tilting Degree Mast Sensor(G-Sensor)



Switch on the Mast Tilt Lever



Auto Fork Leveling System (Optional)

To improve the productivity the auto fork leveling system will automatically stop the tilt movement when the mast is in a straight position.

Advanced **Safety**



Excellent Visibility for Safe Operation

Optimized lift cylinder arrangement provides operator with wider visibility. The panoramic mirror expands the driver's view when backing up.

*Some of the photos may include optional equipment.



Strong Overhead Guard

Exceeding CEE and ANSI regulations, the overhead guard offers optimal protection combined with excellent all round visibility.



Low Entrance Height

The low entrance height ensures easy and safe access for the operator.



Steel Side Cover (Optional)

The strengthened steel side cover provides enhanced durability.



Rear Horn

For safety it encourages the operators hand to remain within the forklift at all times. The integrated switch allows the operator to sound the horn when traveling in reverse.

The safely designed driver's space makes your operating more comfortable.

25/30/33D-9 35DA-9



HAC (Hill Start Assist Control System)

Activates anti-roll back by engaging the parking brake when the unit is stationary on a ramp until the operator resumes travel.

Fork Safety Features

As the forks are being lowered, a down-control valve maintains a controlled descent speed. The down-safety valve prevents forks from dropping down in case of sudden damage of hydraulic line.

OPSS (Operator Presence Sensing System)

When operator is not in seat the hydraulic lift and tilt controls and travel are locked out and the parking brake sets automatically.

- Lift Lock
- Tilt Lock
- Drive Lock
- Parking



*Some of the photos may include optional equipment.



Safety Lamps & Rear Reflectors

LED headlights and rear LED combination lights offer the driver visibility in all circumstances. Rear reflectors mounted on the counterweight enhance safety for the driver and the application.

Fast and Easy Maintenance



Large Engine Hood

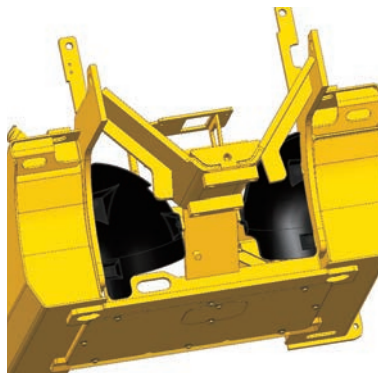
Highly accessible engine compartment assures fast and efficient maintenance.
The enlarged air cleaner(7") has extended service time of engine.

*Some of the photos may include optional equipment.



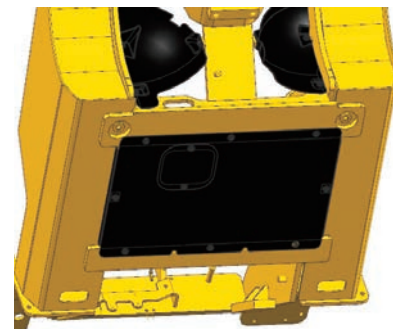
Waterproof & Dustproof Cover

Newly developed Waterproof and Dustproof fuse box and relay box for ease of maintenance.



Rear Tire Cover (Optional)

The rear tire cover with PE material is well-suited to prevent clogging of the radiator from foreign substances.



Under Cover (Optional)

This cover protects engine and components from operation site debris. Helps to extend component life.

An ideal arrangement of components ensures easy access and convenience for maintenance.

25/30/33D-9 35DA-9



Rear View Camera
(Optional)



Parking Brake Switch

With auto parking function when the operator is not in the seat



Emergency Switch (option)

*Some of the photos may include optional equipment.

Maintenance Management				
Item	Interval	Elapse	Count	Alarm
Axle Planetary Ge...	100	2	0	✓
Transmission Oil	100	2	0	✓
Transmission Oil F...	100	2	0	✓
Hydraulic Tank Ai...	250	2	0	✓
Air Cleaner Comp...	450	2	0	✓
Engine Oil Filter	500	2	0	✓

Maintenance Management Display

Enter current password	

1	2
3	4
5	-
6	7
8	9
0	↩
Please enter password (5-10 digits). ↩	

Password Starting System (Anti-theft system)

New 9 Series

Mast Specification (25D-9)

Mast Type	Maximum Fork Height		Overall Height (Lowered)		Free lift height						Tilt Angle		Load capacity w/o side shift		Load capacity w/side shift		TRUCK WEIGHT (UNLOADED)				
					With Load Backrest		Without Load Backrest		Without Load Backrest (3/4-SPOOL)		Fwd	Bwd	Single Tire	Double Tire	Single Tire	Double Tire	Single Tire		Double Tire		
	in	mm	in	mm	in	mm	in	mm	in	mm	deg	deg	lb	lb	lb	lb	lb	kg	lb	kg	
2-STAGE LIMITED FREE LIFT	V300	118.3	3005	79.7	2025	4.5	155	4.5	155	4.5	155	6	10	5000	5000	5000	5000	8549	3878	8823	4002
	*V330	130.1	3305	85.6	2175							6	10	5000	5000	5000	5000	8591	3897	8867	4022
	V350	138.0	3505	89.6	2275							6	10	5000	5000	5000	5000	8629	3914	8904	4039
	V370	145.9	3705	95.5	2425							6	10	5000	5000	5000	5000	8655	3926	8933	4052
	V400	157.7	4005	101.4	2575							6	10	5000	5000	5000	5000	8743	3966	9019	4091
	V430	169.5	4305	107.3	2725							6	6	5000	5000	5000	5000	8858	4018	9134	4143
	V450	177.4	4505	113.2	2875							6	6	5000	5000	4870	5000	8907	4040	9182	4165
	V470	185.2	4705	117.1	2975							6	6	4960	5000	4740	5000	8940	4055	9213	4179
V500	197.0	5005	123.0	3125	6	6	4850	5000	4630	5000	8988	4077	9261	4201							
2-STAGE FULL FREE LIFT	VF295	117.2	2976	79.7	2025	33.3	845	54.2	1377	54	1377	6	6	5000	5000	5000	5000	8593	3898	8878	4027
	VF325	129.0	3276	85.1	2175	38.7	995	60.2	1527	60	1527	6	6	5000	5000	5000	5000	8666	3931	8953	4061
	VF345	136.9	3476	89.6	2275	43.1	1095	64.1	1627	64	1627	6	6	5000	5000	5000	5000	8719	3955	9023	4093
3-STAGE FULL FREE LIFT	TF370	145.9	3705	71.9	1825	25.4	645	46.3	1177	43	1081	6	6	5000	5000	5000	5000	8792	3988	9079	4118
	TF400	157.7	4005	75.8	1925	29.3	745	50.3	1277	46	1181	6	6	5000	5000	5000	5000	8845	4012	9131	4142
	TF430	169.5	4305	79.7	2025	33.3	845	54.2	1377	50	1281	6	6	5000	5000	5000	5000	8884	4030	9171	4160
	TF450	177.4	4505	83.7	2125	37.2	945	58.1	1477	56	1431	6	6	5000	5000	4850	5000	8933	4052	9220	4182
	TF470	185.2	4705	85.6	2175	39.2	995	60.1	1527	56	1431	6	6	4920	5000	4700	4860	8964	4066	9248	4195
	TF500	197.0	5005	89.6	2275	43.1	1095	64.1	1627	60	1531	6	6	4810	4940	4590	4720	9012	4088	9297	4217
	TF550	216.7	5505	97.4	2475	51.0	1295	71.9	1827	70	1781	6	6	3240	4780	3020	4560	9098	4127	9383	4256
	TF600	236.4	6005	105.3	2675	58.9	1495	79.8	2027	78	1981	6	6	2930	4590	2710	4370	9242	4192	9526	4321
	TF650	256.1	6505	113.2	2875	66.7	1695	80.5	2044	75	1904	3	3	2840	4540	2620	4320	9343	4238	9630	4368
	TF700	275.8	7005	121.1	3075	74.6	1895	88.3	2244	83	2104	3	3	2430	4370	2210	4150	9427	4276	9713	4406
	TS370	145.9	3705	71.9	1825	25.4	645	46.3	1177	37	946	6	6	5000	5000	5000	5000	8792	3988	9079	4118
	TS400	157.7	4005	75.8	1925	29.3	745	50.3	1277	41	1046	6	6	5000	5000	5000	5000	8845	4012	9131	4142
	TS430	169.5	4305	79.7	2025	33.3	845	54.2	1377	45	1146	6	6	5000	5000	5000	5000	8884	4030	9171	4160
	TS450	177.4	4505	83.7	2125	37.2	945	58.1	1477	53	1346	6	6	5000	5000	4850	5000	8933	4052	9220	4182
	TS470	185.2	4705	85.6	2175	39.2	995	60.1	1527	51	1296	6	6	4920	5000	4700	4860	8964	4066	9248	4195
	TS500	197.0	5005	89.6	2275	43.1	1095	64.1	1627	55	1396	6	6	4810	4940	4590	4720	9012	4088	9297	4217
	TS550	216.7	5505	97.4	2475	51.0	1295	71.9	1827	67	1696	6	6	3240	4780	3020	4560	9098	4127	9383	4256
TS600	236.4	6005	105.3	2675	58.9	1495	79.8	2027	75	1896	6	6	2930	4590	2710	4370	9242	4192	9526	4321	
TS650	256.1	6505	113.2	2875	66.7	1695	79.4	2016	74	1876	3	3	2840	4540	2620	4320	9343	4238	9630	4368	
TS700	275.8	7005	121.1	3075	74.6	1895	87.2	2216	82	2076	3	3	2430	4370	2210	4150	9427	4276	9713	4406	
4-STAGE FULL FREE LIFT	QF610	240.7	6115	85.0	2160	38.6	980	59.5	1512	56	1412	3	3	3330	4410	3110	4190	9775	4434	10106	4584
	QF660	260.4	6615	92.9	2360	46.5	1180	67.4	1712	63	1612	3	3	2910	4230	2690	4010	9907	4494	10236	4643
	QF700	276.2	7015	96.9	2460	50.4	1280	71.3	1812	67	1712	3	3	2290	4120	2070	3900	9974	4524	10304	4674
	QF745	293.9	7465	102.8	2610	56.3	1430	75.4	1915	69	1762	3	3	1680	3420	1460	3200	10075	4570	10406	4720
	QF790	311.6	7915	108.7	2760	62.2	1580	75.4	1915	69	1762	3	3	1260	2600	1240	2380	10295	4670	10626	4820

25/30/33D-9 35DA-9

Mast Specification (30D-9)

Mast Type	Maximum Fork Height		Overall Height (Lowered)		Free lift height						Tilt Angle		Load capacity w/o side shift		Load capacity w/side shift		TRUCK WEIGHT (UNLOADED)				
					With Load Backrest		Without Load Backrest		Without Load Backrest (3/4-SPOOL)		Fwd	Bwd	Single Tire	Double Tire	Single Tire	Double Tire	Single Tire		Double Tire		
	in	mm	in	mm	in	mm	in	mm	in	mm	deg	deg	lb	lb	lb	lb	lb	kg	lb	kg	
2-STAGE LIMITED FREE LIFT	V300	118.3	3005	80.3	2040	4.5	155	4.5	155	4.5	155	6	10	6000	6000	6000	6000	9431	4278	9638	4372
	*V330	130.1	3305	86.2	2190							6	10	6000	6000	6000	6000	9475	4298	9683	4392
	V350	138.0	3505	90.2	2290							6	10	6000	6000	6000	6000	9515	4316	9722	4410
	V370	145.9	3705	96.1	2440							6	10	6000	6000	6000	6000	9544	4329	9751	4423
	V400	157.7	4005	102.0	2590							6	10	6000	6000	6000	6000	9632	4369	9841	4464
	V430	169.5	4305	107.9	2740							6	6	6000	6000	6000	6000	9749	4422	9956	4516
	V450	177.4	4505	113.8	2890							6	6	6000	6000	5800	6000	9799	4445	10007	4539
	V470	185.2	4705	117.7	2990							6	6	5910	6000	5610	5830	9832	4460	10040	4554
V500	197.0	5005	123.6	3140	6	6	5820	5970	5520	5670	9883	4483	10090	4577							
2-STAGE FULL FREE LIFT	VF295	117.2	2976	80.3	2040	33.9	860	51.7	1314	51.7	1314	6	6	6000	6000	6000	6000	9575	4343	9780	4436
	VF325	129.0	3276	85.1	2190	38.7	1010	60.2	1464	57.6	1464	6	6	6000	6000	6000	6000	9652	4378	9857	4471
	VF345	136.9	3476	90.2	2290	43.7	1110	61.6	1564	61.6	1564	6	6	6000	6000	6000	6000	9729	4413	9934	4506
3-STAGE FULL FREE LIFT	TF370	145.9	3705	72.4	1840	26.0	660	43.9	1114	42.6	1081	6	6	6000	6000	6000	6000	9815	4452	10020	4545
	TF400	157.7	4005	76.4	1940	29.9	760	47.8	1214	46.5	1181	6	6	6000	6000	6000	6000	9870	4477	10073	4569
	TF430	169.5	4305	80.3	2040	33.9	860	51.7	1314	50.4	1281	6	6	6000	6000	5810	6000	9918	4499	10121	4591
	TF450	177.4	4505	84.3	2140	37.8	960	55.7	1414	55.7	1414	6	6	5930	6000	5630	5830	9974	4524	10179	4617
	TF470	185.2	4705	86.2	2190	39.8	1010	57.6	1464	56.3	1431	6	6	5890	5970	5590	5670	10004	4538	10209	4631
	TF500	197.0	5005	90.2	2290	43.7	1110	61.6	1564	60.3	1531	6	6	5730	5840	5430	5540	10055	4561	10258	4653
	TF550	216.7	5505	98.0	2490	51.6	1310	69.4	1764	69.4	1764	6	6	3660	5640	3360	5340	10152	4605	10355	4697
	TF600	236.4	6005	105.9	2690	59.4	1510	77.3	1964	77.3	1964	6	6	3020	5450	2720	5150	10306	4675	10509	4767
	TF650	256.1	6505	113.8	2890	67.3	1710	81.1	2061	75.6	1921	3	3	2930	5380	2630	5080	10419	4726	10622	4818
	TF700	275.8	7005	121.7	3090	75.2	1910	89.0	2261	83.5	2121	3	3	2540	5200	2240	4900	10514	4769	10719	4862
	TS370	145.9	3705	72.4	1840	26.0	660	43.9	1114	41.5	1053	6	6	6000	6000	6000	6000	9815	4452	10020	4545
	TS400	157.7	4005	76.4	1940	29.9	760	47.8	1214	45.4	1153	6	6	6000	6000	6000	6000	9870	4477	10073	4569
	TS430	169.5	4305	80.3	2040	33.9	860	51.7	1314	49.3	1253	6	6	6000	6000	5810	6000	9918	4499	10121	4591
	TS450	177.4	4505	84.3	2140	37.8	960	55.7	1414	55.2	1403	6	6	5930	6000	5630	5830	9974	4524	10179	4617
	TS470	185.2	4705	86.2	2190	39.8	1010	57.6	1464	55.2	1403	6	6	5890	5970	5590	5670	10004	4538	10209	4631
	TS500	197.0	5005	90.2	2290	43.7	1110	61.6	1564	59.2	1503	6	6	5730	5840	5430	5540	10055	4561	10258	4653
	TS550	216.7	5505	98.0	2490	51.6	1310	69.4	1764	69.0	1753	6	6	3660	5640	3360	5340	10152	4605	10355	4697
TS600	236.4	6005	105.9	2690	59.4	1510	77.3	1964	76.9	1953	6	6	3020	5450	2720	5150	10306	4675	10509	4767	
TS650	256.1	6505	113.8	2890	67.3	1710	80.0	2033	74.5	1893	3	3	2930	5380	2630	5080	10419	4726	10622	4818	
TS700	275.8	7005	121.7	3090	75.2	1910	87.9	2233	82.4	2093	3	3	2540	5200	2240	4900	10514	4769	10719	4862	
4-STAGE FULL FREE LIFT	QF610	240.7	6115	85.6	2175	39.2	995	57.0	1449	57.0	1449	3	3	3530	5290	3230	4990	10719	4862	10963	4973
	QF660	260.4	6615	93.5	2375	47.0	1195	64.9	1649	64.9	1649	3	3	3130	5090	2830	4790	10851	4922	11096	5033
	QF700	276.2	7015	97.4	2475	51.0	1295	68.9	1749	68.9	1749	3	3	2510	4960	2210	4660	10917	4952	11162	5063
	QF745	293.9	7465	103.3	2625	56.9	1445	74.8	1899	69.4	1762	3	3	1870	4830	1570	4530	11019	4998	11263	5109
	QF790	311.6	7915	109.3	2775	62.8	1595	75.4	1915	69.4	1762	3	3	1480	4650	1180	4350	11239	5098	11486	5210

New 9 Series

Mast Specification (33D-9)

Mast Type	Maximum Fork Height		Overall Height (Lowered)		Free lift height						Tilt Angle		Load capacity w/o side shift		Load capacity w/side shift		TRUCK WEIGHT (UNLOADED)				
					With Load Backrest		Without Load Backrest		Without Load Backrest (3/4-SPOOL)		Fwd	Bwd	Single Tire	Double Tire	Single Tire	Double Tire	Single Tire		Double Tire		
	in	mm	in	mm	in	mm	in	mm	in	mm	deg	deg	lb	lb	lb	lb	lb	kg	lb	kg	
2-STAGE LIMITED FREE LIFT	V300	118.3	3005	83.1	2110	4.5	155	4.5	155	4.5	155	6	10	6500	6500	6500	6500	10015	4543	10256	4652
	*V330	130.1	3305	89.0	2260							6	10	6500	6500	6500	6500	10068	4567	10309	4676
	V350	138.0	3505	92.9	2360							6	10	6500	6500	6500	6500	10101	4582	10344	4692
	V370	145.9	3705	98.8	2510							6	10	6500	6500	6500	6500	10135	4597	10373	4705
	V400	157.7	4005	104.7	2660							6	10	6500	6500	6500	6500	10225	4638	10465	4747
	V430	169.5	4305	110.6	2810							6	6	6500	6500	6500	6500	10344	4692	10584	4801
	V450	177.4	4505	116.5	2960							6	6	6500	6500	6500	6500	10395	4715	10637	4825
	V470	185.2	4705	120.5	3060							6	6	6500	6500	6300	6500	10430	4731	10670	4840
V500	197.0	5005	126.4	3210	6	6	6420	6500	6120	6500	10483	4755	10723	4864							
2-STAGE FULL FREE LIFT	VF295	117.2	2976	83.1	2110	36.6	930	54.5	1384	54.5	1384	6	6	6500	6500	6500	6500	10198	4626	10432	4732
	VF325	129.0	3276	88.3	2260	41.9	1080	60.1	1534	60.4	1534	6	6	6500	6500	6500	6500	10278	4662	10511	4768
	VF345	136.9	3476	89.0	2260	46.5	1180	64.3	1634	64.3	1634	6	6	6500	6500	6500	6500	10355	4697	10586	4802
3-STAGE FULL FREE LIFT	TF370	145.9	3705	75.2	1910	28.7	730	43.9	1114	43.9	1114	6	6	6500	6500	6500	6500	10514	4769	10747	4875
	TF400	157.7	4005	79.1	2010	32.7	830	47.8	1214	47.8	1214	6	6	6500	6500	6500	6500	10562	4791	10796	4897
	TF430	169.5	4305	83.1	2110	36.6	930	51.7	1314	51.7	1314	6	6	6500	6500	6500	6500	10608	4812	10842	4918
	TF450	177.4	4505	87.0	2210	40.6	1030	55.7	1414	55.7	1414	6	6	6500	6500	6270	6500	10655	4833	10891	4940
	TF470	185.2	4705	89.0	2260	42.5	1080	57.6	1464	57.6	1464	6	6	6350	6500	6050	6290	10686	4847	10919	4953
	TF500	197.0	5005	92.9	2360	46.5	1180	61.6	1564	61.6	1564	6	6	6260	6390	5960	6090	10734	4869	10968	4975
	TF550	216.7	5505	100.8	2560	54.3	1380	69.4	1764	69.4	1764	6	6	4560	6170	4260	5870	10831	4913	11065	5019
	TF600	236.4	6005	108.7	2760	62.2	1580	77.3	1964	77.3	1964	6	6	3130	5950	2830	5650	10992	4986	11226	5092
	TF650	256.1	6505	116.5	2960	70.1	1780	85.2	2164	81.1	2061	3	3	3060	5910	2760	5610	11098	5034	11332	5140
	TF700	275.8	7005	124.4	3160	78.0	1980	93.1	2364	89.0	2261	3	3	2650	5710	2350	5410	11188	5075	11422	5181
	TS370	145.9	3705	75.2	1910	28.7	730	43.9	1114	43.9	1114	6	6	6500	6500	6500	6500	10514	4769	10747	4875
	TS400	157.7	4005	79.1	2010	32.7	830	47.8	1214	47.8	1214	6	6	6500	6500	6500	6500	10562	4791	10796	4897
	TS430	169.5	4305	83.1	2110	36.6	930	51.7	1314	51.7	1314	6	6	6500	6500	6500	6500	10608	4812	10842	4918
	TS450	177.4	4505	87.0	2210	40.6	1030	55.7	1414	55.7	1414	6	6	6500	6500	6270	6500	10655	4833	10891	4940
	TS470	185.2	4705	89.0	2260	42.5	1080	57.6	1464	57.6	1464	6	6	6350	6500	6050	6290	10686	4847	10919	4953
	TS500	197.0	5005	92.9	2360	46.5	1180	61.6	1564	61.6	1564	6	6	6260	6390	5960	6090	10734	4869	10968	4975
	TS550	216.7	5505	100.8	2560	54.3	1380	69.4	1764	69.4	1764	6	6	4560	6170	4260	5870	10831	4913	11065	5019
TS600	236.4	6005	108.7	2760	62.2	1580	77.3	1964	77.3	1964	6	6	3130	5950	2830	5650	10992	4986	11226	5092	
TS650	256.1	6505	116.5	2960	70.1	1780	85.2	2164	80.0	2033	3	3	3060	5910	2760	5610	11098	5034	11332	5140	
TS700	275.8	7005	124.4	3160	78.0	1980	93.1	2364	87.9	2233	3	3	2650	5710	2350	5410	11188	5075	11422	5181	
4-STAGE FULL FREE LIFT	QF610	240.7	6115	87.6	2225	41.1	1045	57.0	1449	57.0	1449	3	3	3750	5930	3450	5630	11270	5112	11515	5223
	QF660	260.4	6615	95.5	2425	49.0	1245	64.9	1649	64.9	1649	3	3	3330	5730	3030	5430	11402	5172	11647	5283
	QF700	276.2	7015	99.4	2525	53.0	1345	68.9	1749	68.9	1749	3	3	2710	5600	2410	5300	11468	5202	11713	5313
	QF745	293.9	7465	105.3	2675	58.9	1495	74.8	1899	73.3	1862	3	3	2090	5420	1790	5120	11563	5245	11808	5356
	QF790	311.6	7915	111.2	2825	64.8	1645	79.3	2015	73.3	1862	3	3	1680	5250	1380	4950	11790	5348	12037	5460

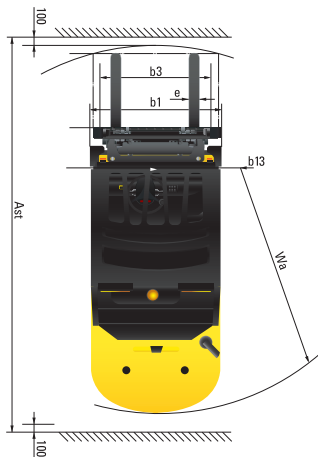
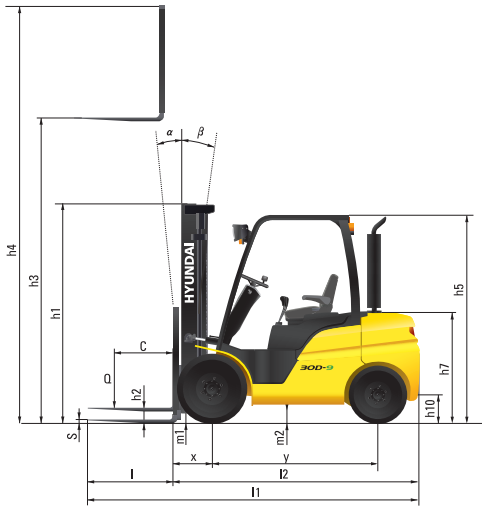
25/30/33D-9 35DA-9

Mast Specification (35DA-9)

Mast Type	Maximum Fork Height		Overall Height (Lowered)		Free lift height						Tilt Angle		Load capacity w/o side shift		Load capacity w/side shift		TRUCK WEIGHT (UNLOADED)				
					With Load Backrest		Without Load Backrest		Without Load Backrest (3/4-SPOOL)		Fwd	Bwd	Single Tire	Double Tire	Single Tire	Double Tire	Single Tire		Double Tire		
	in	mm	in	mm	in	mm	in	mm	in	mm	deg	deg	lb	lb	lb	lb	lb	kg	lb	kg	
2-STAGE LIMITED FREE LIFT	V300	118.3	3005	83.1	2110	4.5	155	4.5	155	4.5	155	6	10	7000	7000	7000	7000	10304	4674	10559	4790
	*V330	130.1	3305	89.0	2260							6	10	7000	7000	7000	7000	10356	4698	10611	4813
	V350	138.0	3505	92.9	2360							6	10	7000	7000	7000	7000	10391	4713	10646	4829
	V370	145.9	3705	98.8	2510							6	10	7000	7000	6890	7000	10444	4737	10698	4853
	V400	157.7	4005	104.7	2660							6	10	7000	7000	6730	6860	10514	4769	10769	4885
	V430	169.5	4305	110.6	2810							6	6	6950	7000	6580	6710	10632	4823	10887	4938
	V450	177.4	4505	116.5	2960							6	6	6850	7000	6470	6620	10684	4846	10939	4962
	V470	185.2	4705	120.5	3060							6	6	6750	6930	6380	6530	10719	4862	10974	4978
V500	197.0	5005	126.4	3210	6	6	6600	6800	6250	6380	10772	4886	11026	5002							
2-STAGE FULL FREE LIFT	VF295	117.2	2976	83.1	2110	36.6	930	54.5	1384	54	1384	6	6	7000	7000	7000	7000	10488	4757	10736	4870
	VF325	129.0	3276	89.0	2260	41.9	1080	60.1	1534	60	1534	6	6	7000	7000	7000	7000	10565	4792	10814	4905
	VF345	136.9	3476	92.9	2360	46.5	1180	64.3	1634	64	1634	6	6	7000	7000	6900	7000	10643	4828	10890	4940
3-STAGE FULL FREE LIFT	TF370	145.9	3705	75.2	1910	28.7	730	43.9	1114	44	1114	6	6	7000	7000	6750	6860	10802	4900	11050	5012
	TF400	157.7	4005	79.1	2010	32.7	830	47.8	1214	48	1214	6	6	6950	7000	6600	6730	10850	4922	11099	5034
	TF430	169.5	4305	83.1	2110	36.6	930	51.7	1314	52	1314	6	6	6820	7000	6460	6600	10896	4943	11144	5055
	TF450	177.4	4505	87.0	2210	40.6	1030	55.7	1414	56	1414	6	6	6710	6890	6380	6510	10944	4964	11193	5077
	TF470	185.2	4705	89.0	2260	42.5	1080	57.6	1464	58	1464	6	6	6620	6800	6290	6420	10974	4978	11222	5090
	TF500	197.0	5005	92.9	2360	46.5	1180	61.6	1564	62	1564	6	6	6490	6670	6160	6290	11024	5000	11272	5113
	TF550	216.7	5505	100.8	2560	54.3	1380	69.4	1764	69	1764	6	6	4820	6450	4490	6070	11120	5044	11368	5157
	TF600	236.4	6005	108.7	2760	62.2	1580	77.3	1964	77	1964	6	6	3100	6230	2810	5870	11280	5117	11528	5229
	TF650	256.1	6505	116.5	2960	70.1	1780	85.2	2164	81	2061	3	3	2860	6000	2570	5670	11387	5165	11636	5278
	TF700	275.8	7005	124.4	3160	78.0	1980	93.1	2364	89	2261	3	3	2570	5800	2280	5500	11476	5206	11725	5318
	TS370	145.9	3705	75.2	1910	28.7	730	43.9	1114	44	1114	6	6	7000	7000	6750	6860	10802	4900	11050	5012
	TS400	157.7	4005	79.1	2010	32.7	830	47.8	1214	48	1214	6	6	6950	7000	6600	6730	10850	4922	11099	5034
	TS430	169.5	4305	83.1	2110	36.6	930	51.7	1314	52	1314	6	6	6820	7000	6460	6600	10896	4943	11144	5055
	TS450	177.4	4505	87.0	2210	40.6	1030	55.7	1414	56	1414	6	6	6710	6890	6380	6510	10944	4964	11193	5077
	TS470	185.2	4705	89.0	2260	42.5	1080	57.6	1464	58	1464	6	6	6620	6800	6290	6420	10974	4978	11222	5090
	TS500	197.0	5005	92.9	2360	46.5	1180	61.6	1564	62	1564	6	6	6490	6670	6160	6290	11024	5000	11272	5113
	TS550	216.7	5505	100.8	2560	54.3	1380	69.4	1764	69	1764	6	6	4820	6450	4490	6070	11120	5044	11368	5157
TS600	236.4	6005	108.7	2760	62.2	1580	77.3	1964	77	1964	6	6	3100	6230	2810	5870	11280	5117	11528	5229	
TS650	256.1	6505	116.5	2960	70.1	1780	82.8	2103	80	1963	3	3	2860	6000	2570	5670	11387	5165	11636	5278	
TS700	275.8	7005	124.4	3160	78.0	1980	90.7	2303	88	2163	3	3	2570	5800	2280	5500	11476	5206	11725	5318	
4-STAGE FULL FREE LIFT	QF610	240.7	6115	87.6	2225	41.1	1045	57.0	1449	57	1449	3	3	4200	6050	3950	5670	11558	5243	11818	5361
	QF660	260.4	6615	95.5	2425	49.0	1245	64.9	1649	65	1649	3	3	3800	5830	3470	5470	11691	5303	11951	5421
	QF700	276.2	7015	99.4	2525	53.0	1345	68.9	1749	69	1749	3	3	2770	5700	2460	5640	11757	5333	12017	5451
	QF745	293.9	7465	105.3	2675	58.9	1495	74.8	1899	73	1862	3	3	1930	5520	1630	5190	11851	5376	12111	5493
	QF790	311.6	7915	111.2	2825	64.8	1645	79.3	2015	73	1862	3	3	1360	5340	1080	5010	12080	5479	12339	5597

New 9 Series

Dimension



Specification

Identification						
1.1	Manufacturer		Hyundai	Hyundai	Hyundai	Hyundai
1.2	Manufacturer's model designation		25D-9	30D-9	33D-9	35DA-9
1.3	Drive: electric (battery or mains),diesel,petrol,fuel gas,manual		DIESEL	DIESEL	DIESEL	DIESEL
1.4	Type of operation:hand,pedestrian,standing,seated,order-picker		seated	seated	seated	seated
1.5	Load capacity / Rated load	c in	24	24	24	24
1.6	Load center distance	x in	18	18	18	18
1.8	Load distance, center of drive axle to fork	y in	18.4	18.4	18.4	18.4
1.9	Wheelbase	y in	65	67	67	67

Weights						
2.1	Service weight	lb	8,572	9,440	10,055	10,357
2.2	Axle loading, loaded front / rear	lb	12273 / 1812	14054 / 1997	15006 / 2324	15678 / 2425
2.3	Axle loading, unloaded front / rear	lb	3527 / 5044	3675 / 5765	3589 / 6466	3541 / 6817

Wheels, Chassis						
3.1	Tires ; Pneumatic(P), Solid(S), Non-marking(N)		P	P	P	P
3.2	Tires size, front	Single	7.00-12-14PR	28X9-15-14PR	28X9-15-14PR	28X9-15-14PR
		Double	6.00-15-10PR	6.00-10-10PR	6.00-10-10PR	6.00-10-10PR
3.3	Tires size, rear	Single	6.50-10-14PR	6.50-10-14PR	6.50-10-14PR	6.50-10-14PR
		Double	6.50-10-12PR	6.50-10-12PR	6.50-10-12PR	6.50-10-12PR
3.4	Number of wheels front / rear (x=driven wheels)		2x / 2	2x / 2	2x / 2	2x / 2
3.5	Tires width, front	in	39.3	39.5	39.5	39.5
		Double	in	2542	2542	2542
	Tires width, rear	in	39	39	39	39

Basic Dimensions							
4.1	Mast / fork carriage tilt forward / backward (α/β) degrees		6 / 10	6 / 10	6 / 10	6 / 10	
4.2	Lowered mast height	h1 (in)	86	86	86	86	
4.3	Free lift	h2 (in)	6.1	6.1	6.1	6.1	
4.4	Lift height	h3 (in)	130	130	130	130	
4.5	Extended mast height	h4 (in)	177	177	177	177	
4.7	Overhead guard height (cabin)	h5 (in)	85 (2170)	86 (2190)	86 (2190)	86	
4.8	Seat height / standing height rel. to SIP	h7 (in)	47	48	48	48	
4.12	Coupling height	h10 (in)	12	13	13	13	
4.19	Overall length	l1 (in)	144	147	149	150	
4.20	Length to face of forks	l2 (in)	103	105	108	109	
4.21	Overall width	Single	b1 (in)	2646	2707	2707	2707
		Double	b1 (in)	3344	3344	3344	3344
4.22	Fork dimensions(hook type)	l / e / s (in)	41.3 x 3.9 x 1.8	41.3 x 4.8 x 1.8	41.3 x 4.8 x 1.8	41.3 x 4.8 x 1.8	
4.23	Fork carriage ITA Class		II	III	III	III	
4.24	Fork-carriage width	b3 (in)	43	43	43	43	
4.31	Ground clearance, loaded, under mast	m1 (in)	5.1	5.7	5.7	5.7	
4.32	Ground clearance, centre of wheelbase	m2 (in)	6.2	7.1	7.1	7.1	
4.33	Aisle width for pallets 1,000x1,200 crossways (LxW)	Ast (in)	158	161	163	164	
4.34	Aisle width for pallets 800x1,200 lengthways (WxL)	Ast (in)	166	169	171	172	
4.35	Turning radius	Wa (in)	92	95	97	98	
4.36	Smallest pivot point distance	b13 (in)	28	29	29	29	

Performance Data						
5.1	Travel speed, unloaded	mph	11.5	12.4	12.4	12.4
5.2	Lift speed, loaded/ unloaded	ft/min	110 / 126	93 / 104	91 / 104	89 / 104
5.3	Lowering speed, loaded/unloaded	ft/min	98 / 89	98 / 89	98 / 89	96 / 86
5.5	Drawbar pull, loaded	in	5921	5379	5386	5390
5.7	Gradient performance, loaded	%	40.7	31.4	29	27.1
5.9	Acceleration time, loaded/ unloaded(10m)	sec	-	-	-	-
5.10	Service brake		Wet Disc	Wet Disc	Wet Disc	Wet Disc

Engine						
6.1	Engine manufacturer / type		Kubota V3307	Kubota V3307	Kubota V3307	Kubota V3307
6.2	Engine power acc. to ISO 1585	hp/rpm	67 / 2300	67 / 2300	67 / 2300	67 / 2300
6.3	Maximum Torque	ft-lb/rpm	168.5 / 1500	168.5 / 1500	168.5 / 1500	168.5 / 1500
6.4	No. of cylinder / cubic capacity	EA/cc	4 / 3331	4 / 3331	4 / 3331	4 / 3331
6.5	Fuel consumption acc. To VDI cycle	g/h	0.85	0.9	0.95	0.95

Other Details						
8.1	Type of drive control		PowerShift	PowerShift	PowerShift	PowerShift
8.2	Operating pressure, system / attach	bar	182 / 162	196 / 162	196 / 162	216 / 162
8.3	Oil volume (hydraulic)	l	36	38	38	38
8.4	Sound pressure level (at driver's ear according to DIN 12053)	dB(A)	80	80	80	80
8.5	Trailer coupling, type DIN		PIN	PIN	PIN	PIN

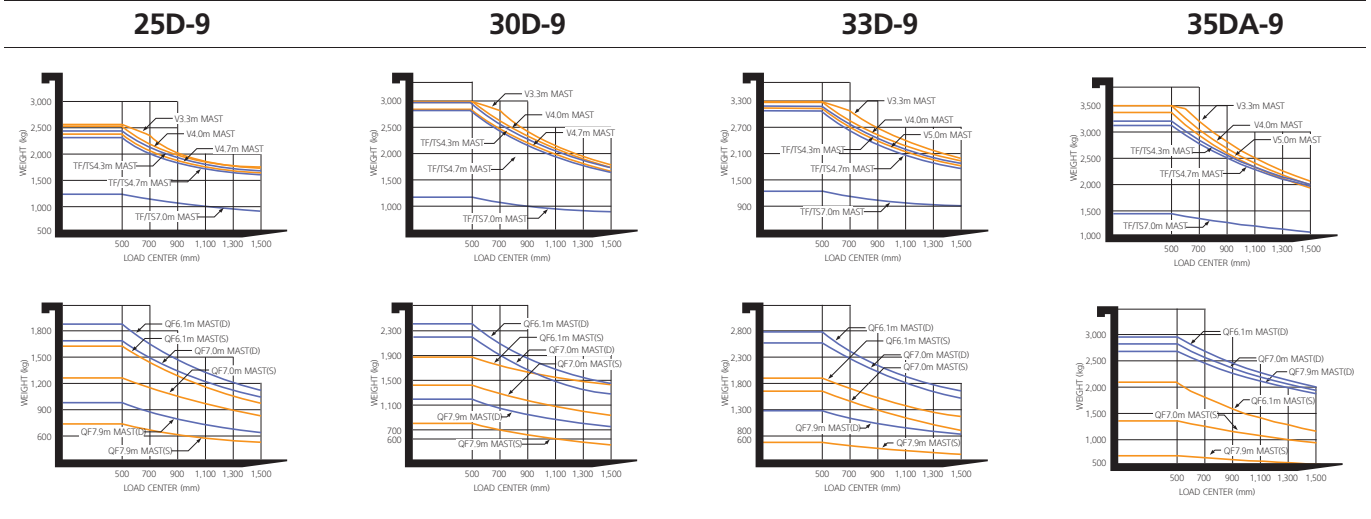
Air Conditioning System

The air condition system for the machine contains the fluorinated greenhouse gas with global warming potential of R134a. (Global Warming Potential : 1430)

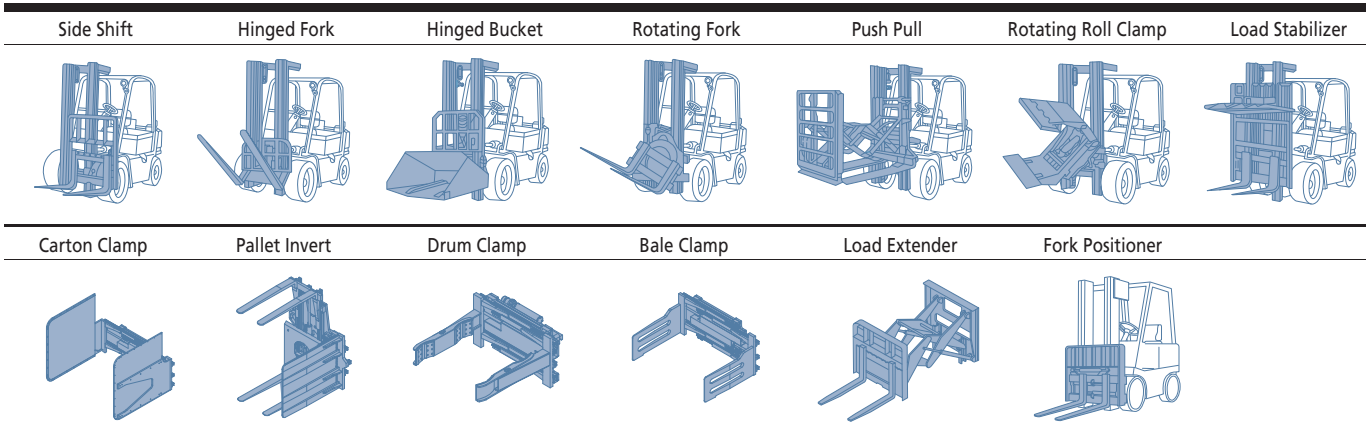
The system hold 0.55kg refrigerant consisting of a CO₂ equivalent 0.79kg metric tonne. For more information, Please refer to the manual.

25/30/33D-9 35DA-9

Load Capacity



Various Attachments



Optional Items

- **Fork(mm)**
25D-9 : 900, 1000, 1050(STD), 1200, 1350, 1500, 1650, 1800, 2100
30/33D-9, 35DA-9 : 900, 1050(STD), 1150, 1200, 1650, 1800, 1970, 2120, 2300, 2400
- **Integral Sideshift, Fork Positioner, Sideshift, Integral Fork Positioner with Sideshift**
- **Tire : Solid(superelastic) / Non-marking / Front double tire**
- **M.C.V : 4-Spool**
- **Auto Fork Leveling System**
- **Rear View Camera**
- **Cabin(Heater, A/C)**
- **Hydraulic Pump Temperature / Pressure Indication**
- **Beacon Lamp(LED) (Amber, Red, Blue)**
- **Rear work Lamp(Bulb or LED)**
- **F-N-R & Horn Knob switch**
- **Finger Tip Control Lever**

MEMO



North American Headquarters
6100 Atlantic Blvd, Norcross, GA 30071
TEL (678) 823 7777 FAX (687) 823 7778

PLEASE CONTACT