



Building a better future

HYUNDAI LPG FORKLIFT TRUCKS **Applied Tier 4 Engine**

15/18/20L-7M





Hyundai Forklift introduces a new line of 7M Series LPG forklift trucks that deliver excellent power and performance, making your business more profitable.



OPSS (Operator Presence Sensing System)
Activating the OPSS disables the mast tilting, lifting and lowering functions when the operator is not in the seated position.

Meet the new boss of the job site.

Smooth running, efficient and ergonomically designed, the Hyundai 15/18/20L-7M series trucks are sure to meet your material handling needs.

49hp/ 2,450rpm

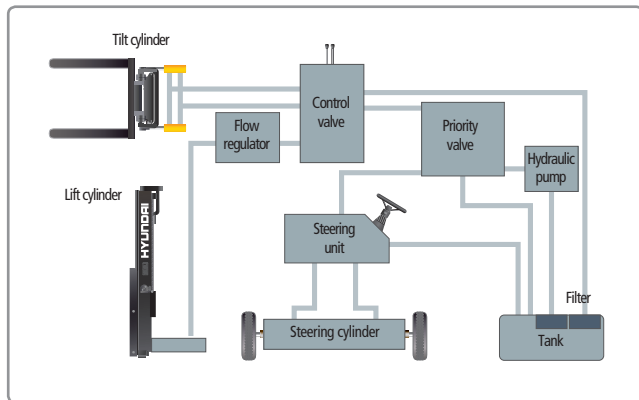
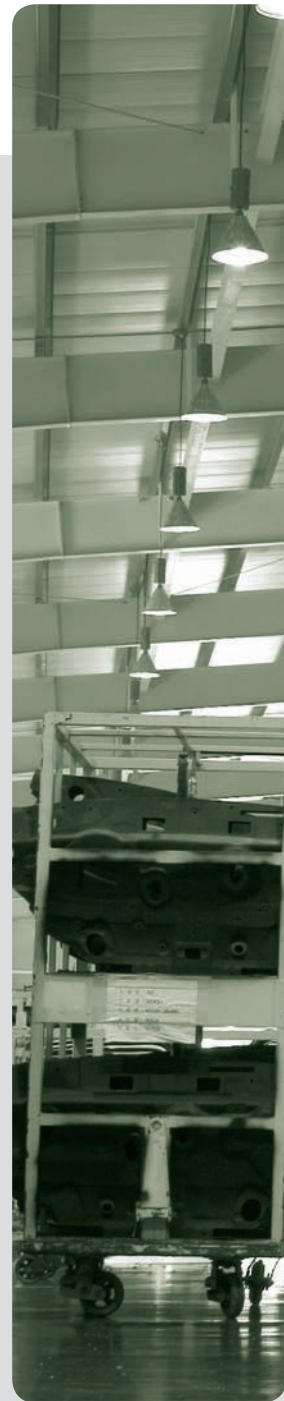
Powerful L4KB Engine



The L4KB engine delivers unmatched performance, durability and additional value, and provides excellent fuel consumption and torque. (EPA / CARB Tier 4 Certified)

Fast, stable performance

The movable mast provides ideal operating conditions when loading and unloading. When the truck is fully loaded, the Mast (Lift and Tilt) Lock System controls the mast lowering speed, providing increased safety on the job site.



State-of-the-art hydraulic system

Featuring a low-noise control valve, the large-capacity hydraulic system increases efficiency and durability.



Hydrostatic power steering

The hydraulic steering system ensures smooth and flexible steering and prevents overrun and kick-back.



Photos may include optional equipment.



Increased mast tilting angle

The mast tilting angle of 6 degrees forward and 10 degrees backward allows the operator to efficiently load and unload material.

Faster travel speed, improved gradeability

The powerful, high-output engine delivers improved acceleration and gradeability on the toughest terrain or slope.



Gradeability (loaded)

15L-7M: 21.7 degrees
18L-7M: 19.5 degrees
20L-7M: 18.3 degrees

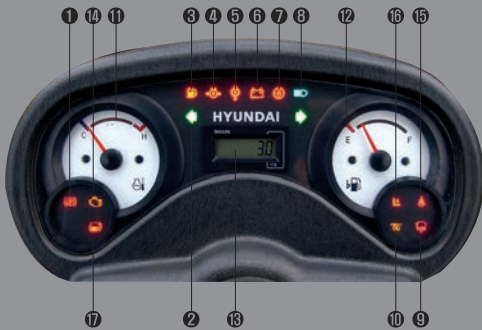
Travel speed (unloaded)

15L-7M: 12.5 mph
18L-7M: 12.5 mph
20L-7M: 12.5 mph

Ergonomic, operator-friendly cab

The ergonomic cab relieves operator fatigue and increases operator efficiency.

User-friendly gauges, water-resistant monitor panel



- | | | |
|---|------------------------------------|--------------------------|
| ① Parking brake lamp | ⑥ Battery charging warning lamp | ⑫ Fuel gauge |
| ② Directional indicators | ⑦ Air cleaner filter warning light | ⑬ Hour meter |
| ③ Fuel warning lamp | ⑧ Working light indicator | ⑭ Engine check lamp |
| ④ Engine oil warning lamp | ⑨ Water separator lamp | ⑮ Seat belt warning |
| ⑤ Transmission oil temperature warning lamp | ⑩ Pre-heater indicator | ⑯ OPS warning |
| | ⑪ Water temperature gauge | ⑰ Brake oil warning lamp |

Grammer seat



With an asymmetrical backrest and movable armrests, the adjustable ergonomic seat provides great operator comfort and safety.



Enhanced operator visibility

A wider view mast allows the operator to work with increased safety and accuracy.



Ergonomically positioned pedals

The accelerator, brake and inching pedals are optimally positioned for improved operator convenience.



Cup holder and console box

The cab features additional storage for greater operator convenience.



Quick-response control levers

The controls deliver increased precision with minimal operator effort.



Adjustable steering wheel

Featuring a horn button and a right-hand lever, the steering wheel can be adjusted by the operator for comfortable positioning.



Safe, easy shift lever

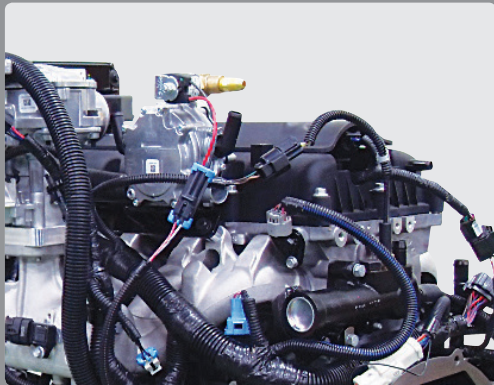
A single lever on the left side of the steering column provides fast, easy directional control. For added safety, the lever must be in the neutral position before the engine can be started.



Secondary horn

The secondary horn also controls headlamps.

Safety and durability built in



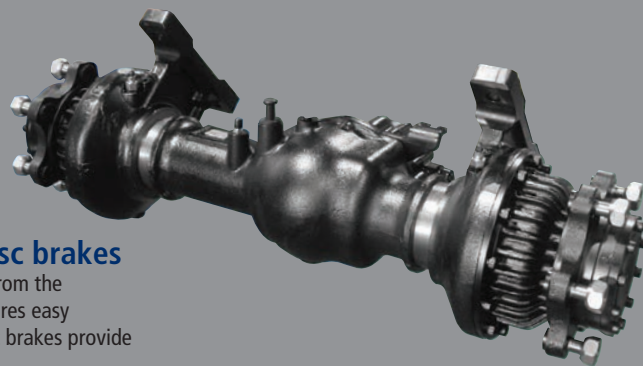
Strong overhead guard

The ISO 6055-compliant overhead safety guard provides added protection for the operator during hazardous jobs.



Parking brake

The ratchet type parking brake requires minimal effort for the operator to set.



Durable drive axle, wet disc brakes

The strengthened drive axle (separable from the transmission) delivers low vibration ensures easy maintenance. Maintenance-free wet disc brakes provide smooth braking.



Large footboard and hand grip

The wide, durable step offers added convenience and safety when entering and exiting the truck.



Expansion bellows

The expansion bellows absorb vibration, reduce noise generated by the exhaust system, and extend the system's life cycle.



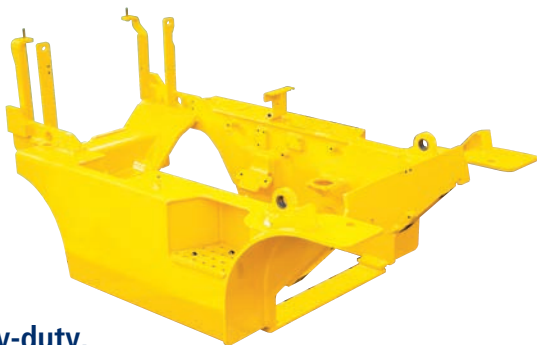
Electrically monitored air filter

The air cleaner sensor detects a restricted air filter and alerts the operator so the filter can be replaced to prevent damage.





Photos may include optional equipment.



Heavy-duty, single unit frame

The solid frame ensures greater durability and safety.



Bright, protected headlights

The powerful head lights are positioned to provide exceptional visibility to the job site.



Rear safety lamp

Rear combination lamps with directional indicators, rear lights and brake lights are positioned to provide a higher level of safety.

Quick, easy service

Component parts are conveniently located and easily accessible for fast maintenance.



Quick-change air cleaner

The 6-inch cyclone air filter is readily accessible for cleaning or replacement.



Easy access for daily fluid checks



Rotating battery tray



One-touch, no-tool floor plate



Aluminum radiator floor plate



Centralized electric parts

Electrical parts are located in the dash board for effortless troubleshooting.



Easy oil checks

The oil level can be checked without any disassembly.



Brake fluid reservoir with level switch

When the minimum brake fluid level is reached, the warning lamp on the instrument cluster is activated.



Compact fuse box for easy inspection

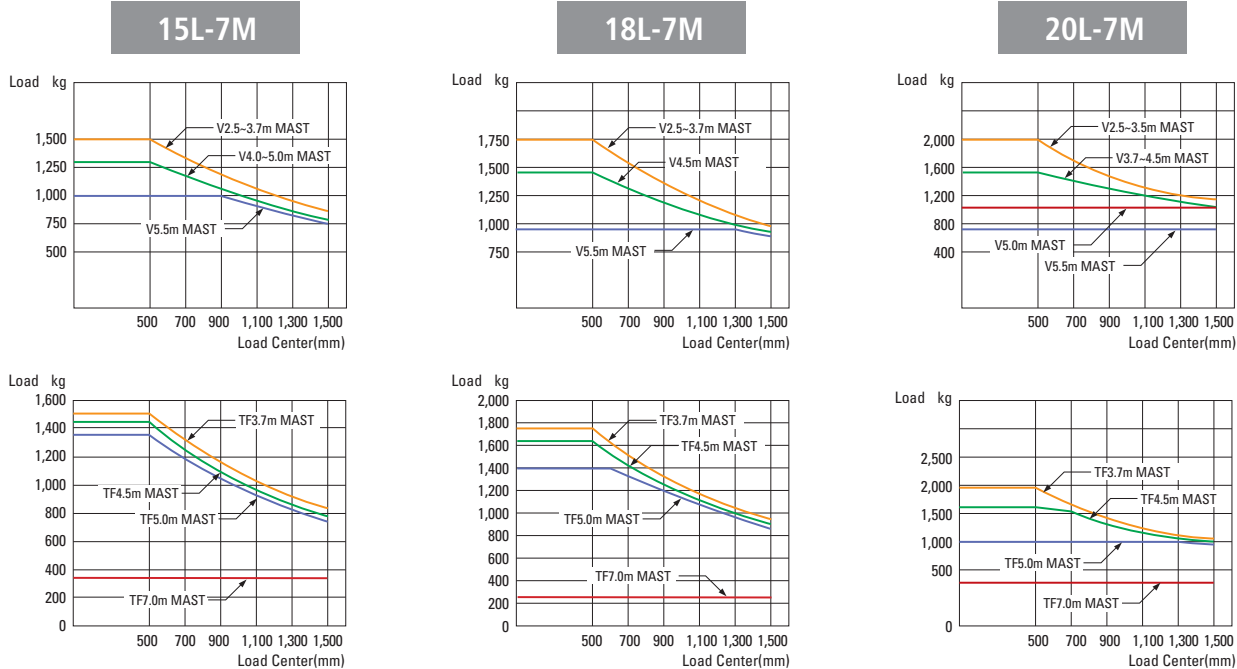
Mast specifications

Mast Type	Maximum Fork Height (in)	Overall Height Lowered (in)	Tilt Angle (deg)		Free Lift (in)				Load Capacity without Integral Side Shift 24 in (lb)			Load Capacity with Integral Side Shift 24 in (lb)			Truck Weight Unloaded (lb)			
					With Backrest		Without Backrest		Single Tire			Single Tire			Single Tire			
			Fwd	Bwd	15L/18L-7M	20L-7M	15L/18L-7M	20L-7M	15L-7M	18L-7M	20L-7M	15L-7M	18L-7M	20L-7M	15L-7M	18L-7M	20L-7M	
2-Stage Limited Free Lift	V250	99	6	10	5.7	5.9	5.7	5.9	3,307	3,858	4,409	3,086	3,638	4,167	6,094	6,477	6,801	
	V270	107	73	6	10	5.7	5.9	5.7	5.9	3,307	3,858	4,409	3,086	3,638	4,167	6,124	6,508	6,832
	V300	119	79	6	10	5.7	5.9	5.7	5.9	3,307	3,858	4,409	3,086	3,638	4,167	6,169	6,552	6,876
	*V330	131	85	6	10	5.7	5.9	5.7	5.9	3,307	3,858	4,409	3,086	3,638	4,167	6,213	6,596	6,920
	V350	139	89	6	10	5.7	5.9	5.7	5.9	3,307	3,858	4,409	3,086	3,638	4,167	6,243	6,627	6,949
	V370	147	93	6	10	5.7	5.9	5.7	5.9	3,307	3,858	4,299	3,086	3,638	4,068	6,272	6,656	6,980
	V400	158	99	6	10	5.7	5.9	5.7	5.9	3,197	3,825	3,417	3,009	3,605	3,230	6,327	6,711	7,033
	V450	178	112	6	6	5.7	5.9	5.7	5.9	3,031	3,638	3,307	2,844	3,417	3,131	6,473	6,856	7,180
	V500	198	122	6	6	5.7	5.9	5.7	5.9	2,866	3,197	2,205	2,701	3,009	2,072	6,548	6,931	7,253
V550	218	132	6	5	5.7	5.9	5.7	5.9	2,205	2,094	1,653	2,050	1,940	1,521	6,592	6,975	7,300	
3-Stage Full Free Lift	TF/TS370	147	71	6	6	31	32	51	51	3,307	3,858	4,244	3,086	3,638	4,012	6,422	6,806	7,150
	TF/TS400	159	75	6	6	35	36	55	55	3,307	3,748	4,134	3,086	3,527	3,913	6,466	6,850	7,194
	TF/TS430	171	79	6	6	39	39	59	59	3,197	3,748	4,023	3,009	3,527	3,803	6,508	6,892	7,236
	TF/TS450	179	83	6	6	43	43	63	63	3,142	3,605	3,638	2,954	3,395	3,417	6,550	6,934	7,277
	TF/TS470	186	85	6	6	45	45	65	65	3,086	3,197	2,976	2,910	3,009	2,811	6,576	6,960	7,304
	TF/TS500	198	89	6	6	49	49	69	59	3,031	3,086	2,205	2,855	2,910	2,061	6,618	7,002	7,346
	TF/TS550	218	97	6	5	57	57	77	77	2,315	2,425	1,653	2,172	2,271	1,521	6,702	7,086	7,430
	TF/TS600	238	105	6	5	65	65	85	85	1,653	1,653	1,102	1,543	3,402	922	6,861	7,244	7,588
	TF/TS650	257	112	3	3	73	73	92	92	1,102	1,102	992	992	992	882	6,960	7,344	7,688
TF/TS700	277	120	3	3	81	81	100	100	772	551	661	661	441	551	7,039	7,423	7,767	

* TS-Mast : Wide Visible 3 Stage Full Free Lift Mast with 2 Free Lift Cylinders.

* Standard

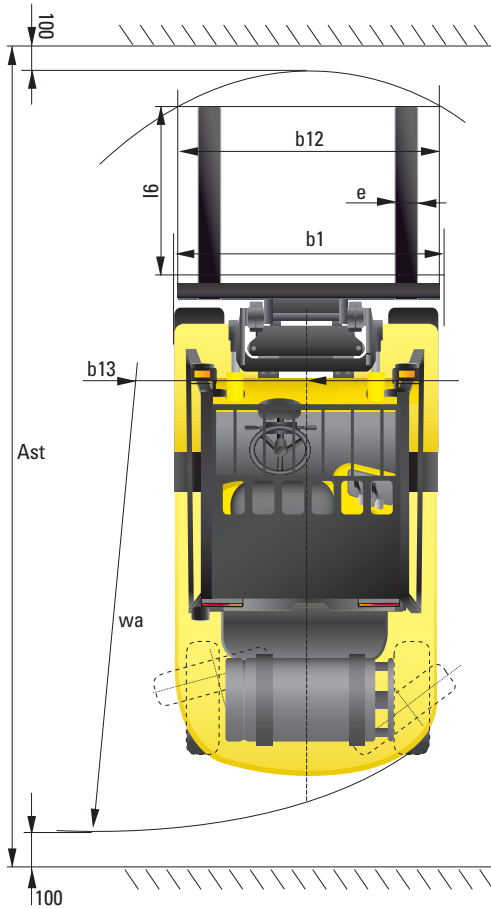
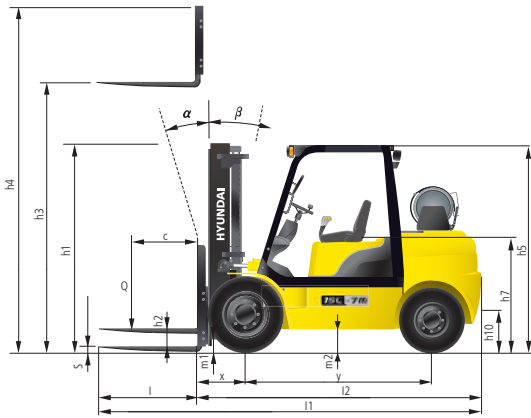
Load capacity



Optional items

- Side shift
- Integral side shift
- Fork: 30 / 33 / 41 / 47 / 53 / 59 in
[15/18L-7M]
37 / 39 / 41 / 47 / 53 / 59 / 63 in
1,600 mm [20L-7M]
- Over shoe: 51 / 59 / 67 in
- Tilting: 6/5°, 3/3°, 6/6°
- Tire: cushion, no-marking
- Seat: pocket, armrest, hiprest
- LPG clamp: swing out, swing down
- M.C.V: 4-spool
- Attach piping: 3-spool piping, 4-spool piping
- Master switch
- Beacon lamp
- Hazard switch
- Work lamp
- Speed control sensor

Dimensions



Specifications

Identification					
1.1	Manufacturer	Hyundai	Hyundai	Hyundai	
1.2	Manufacturer's type designation	15L-7M	18L-7M	20L-7M	
1.3	Drive: electric (battery or mains), diesel, petrol, fuel gas, manual	LP	LP	LP	
1.4	Type of operation: hand, pedestrian, standing, seated, order-picker	Seated	Seated	Seated	
1.5	Load capacity / rated load	Q (lb)	3,300	3,800	4,400
1.6	Load center distance	c (in)	24	24	24
1.8	Load distance, center of drive axle to fork	x (in)	15	15	16
1.9	Wheelbase	y (in)	56	56	56

Weights					
2.1	Service weight	lb	5,930	6,307	6,713
2.2	Axle loading, loaded front/rear	lb	8,025 / 1,213	8,832 / 1,334	9,656 / 1,455
2.3	Axle loading, unloaded front/rear	lb	2,624 / 3,307	2,529 / 3,779	2,438 / 4,275

Wheels, Chassis					
3.1	Tires: solid rubber, superplastic, pneumatic, polyurethane		Pneumatic	Pneumatic	Pneumatic
3.2	Tire size, front (width x Φ)		6.5 x 10 x 12PR	6.5 x 10 x 12PR	6.5 x 10 x 12PR
3.3	Tire size, rear (width x Φ)		5.0 x 8 x 10PR	5.0 x 8 x 10PR	5.0 x 8 x 10PR
3.5	Wheels, number front x rear (x = driven wheels)		2 x 2	2 x 2	2 x 2
3.6	Track width, front	b10 (in)	35	35	35
3.7	Track width, rear	b11 (in)	36	36	36

Basic Dimensions					
4.1	Mast / fork carriage tilt forward / backward (α / β)	degrees	6 / 10	6 / 10	6 / 10
4.2	Lowered mast height	h1 (in)	85	85	85
4.3	Free lift	h2 (in)	5.7	5.7	5.7
4.4	Lift height	h3 (in)	131	131	131
4.5	Extended mast height	h4 (in)	171	171	171
4.7	Overhead load guard (cab) height	h5 (in)	83	83	83
4.8	Seat height / standing height	h7 (in)	41	41	41
4.12	Coupling height	h10 (in)	10.3	10.3	10.2
4.19	Overall length	l1 (in)	88 + l	89 + l	94 + l
4.20	Length to face of forks	l2 (in)	88	89	94
4.21	Overall width	b1 (in)	42	42	42
4.22	Fork dimensions	l / e / s (in)	35 x 3.9 x 1.4	35 x 3.9 x 1.4	35 x 3.9 x 1.6
4.23	Fork carriage ISO 2328, class / type A,B		II / A	II / A	II / A
4.24	Fork-carriage width	b12 (in)	40	40	40
4.31	Ground clearance, loaded, under mast	m1 (in)	4.7	4.7	4.7
4.32	Ground clearance, centre of wheelbase	m2 (in)	5.7	5.7	5.7
4.33	Right-angle stacking aisle with 40 x 48 in	Ast (in)	141	143	144
4.34	Right-angle stacking aisle with 32 x 48 in		149	5.9	152
4.35	Turning radius	Wa (in)	79	80	81
4.36	Smallest pivot point distance	b13 (in)	23	23	23

Performance Data					
5.1	Travel speed, unloaded	km / h	12.5	12.5	12.5
5.2	Lift speed, loaded / unloaded	in / s	26 / 27	26 / 27	26 / 27
5.3	Lowering speed, loaded / unloaded	in / s	20 / 18	20 / 18	20 / 18
5.5	Drawbar pull, loaded	lb	3,827	3,849	3,880
5.7	Gradient performance, loaded	%	39.7	35.4	33.0
5.10	Service brake		Hydraulic	Hydraulic	Hydraulic

Engine					
6.1	Engine manufacturer / type		L4KB	L4KB	L4KB
6.2	Engine power acc. to ISO 1585	hp	50	50	50
6.3	Rated speed	l / min	2,450	2,450	2,450
6.4	No. of cylinder / cubic capacity	/cm ³	4 / 144	4 / 144	4 / 144

Other Details					
8.2	Type of drive control		Power Shift	Power Shift	Power Shift
8.3	Operating pressure	bar	225 / 168	225 / 168	225 / 168
8.4	Oil volume	l / min	30	30	30
8.5	Noise	db(A)	80	80	80



www.hceamericas.com

Hyundai Construction Equipment Americas, Inc.
6100 ATLANTIC BOULEVARD NORCROSS GA 30071 U.S.A
TEL (678) 823-7777 / FAX (678) 823-7778

1032-FL-PR Rev 4/2016