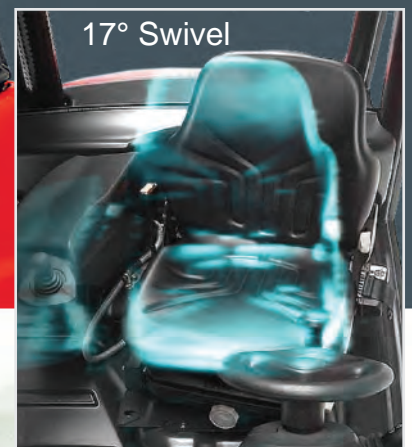
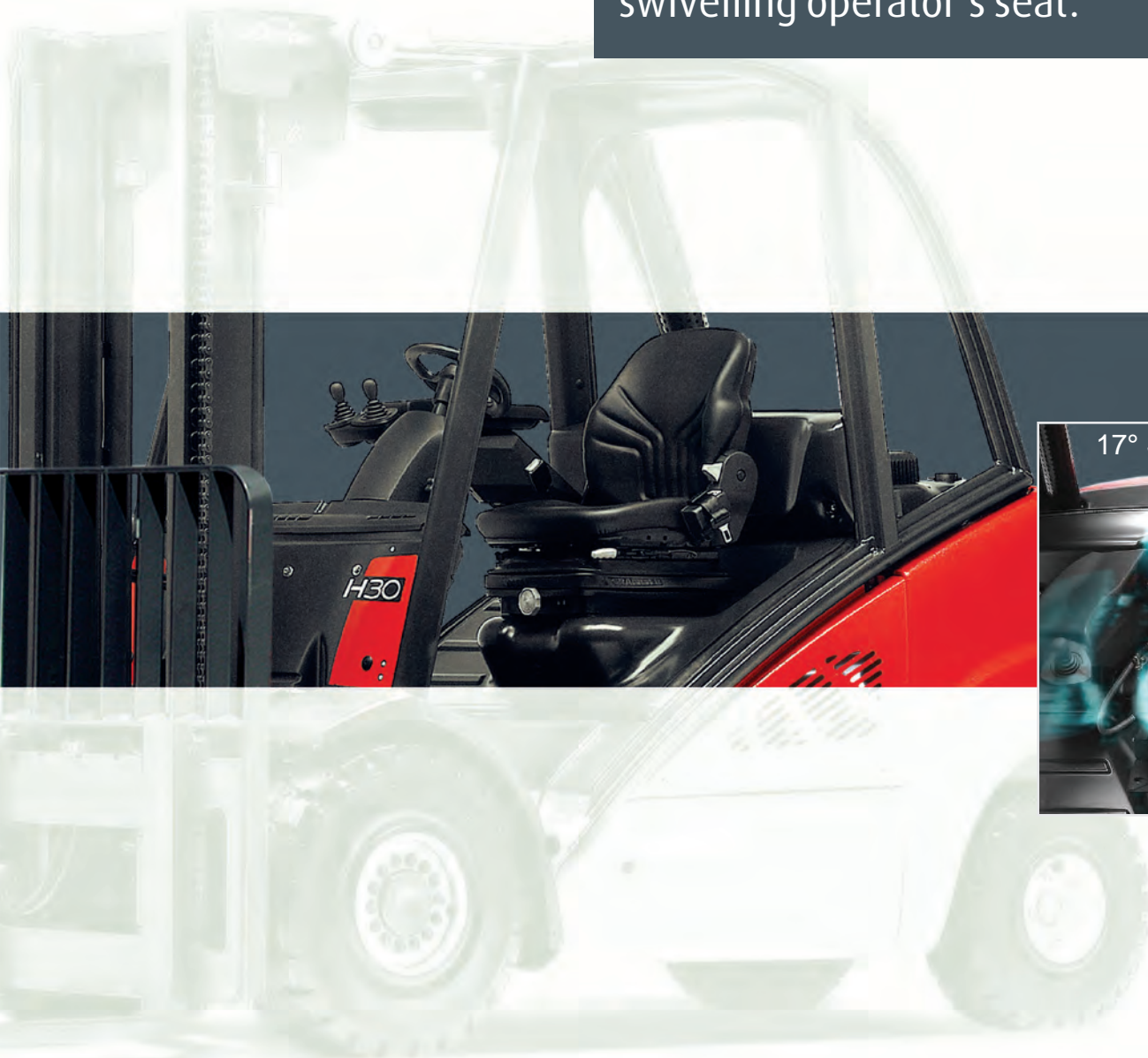


Linde Material Handling

Linde

Achieve more and safely.
Linde forklifts 39X (H25-35) with
swivelling operator's seat.



Forwards or reverse - Good visibility and safe operation, without stress or strain.

By request ex works.

When traveling in reverse, several operational and physical elements can be adversely affected. These include visibility, material flow, productivity, safety, and last but not least the operator's health. The reasons for this are obvious. The spinal column and other muscles are placed under considerable stress when turning the head, torso and pelvis. The field of vision to the rear is also restricted even when twisting the body as far around as possible.

The new Linde engine truck series 393 fitted with the optional swivelling seat, provides the ideal solution to this problem. Put simply, the operator no longer has to twist in the seat, since the seat, together with the integrated armrest and fingertip hydraulic controls, swivels to suit the reverse steering mode:



Poor visibility-reduced safety. In a standard seat the operator has to assume an uncomfortable twisting posture when reversing.



- With the swivel seat fitted, operator's can maintain an ergonomic, stress-free driving posture.
- The field of vision to the rear is widened by around **12°** thus enhancing the operator's awareness of the surrounding environment and other personnel, for enhanced operational safety.
- Efficiency and productivity are also Improved.



All
loc
and
The
car
17°
eve
ma



Get a new angle on the task.

The best ideas emanate from operational demands. Whether reversing over distances with bulky loads, such as in the drinks industry, or whether complicated maneuvers are involved — the swivelling operator's seat from Linde will place you in the right position. However, its full potential is only realized when other unique ergonomic Linde features are taken into account:

- Linde twin accelerator pedals. As the accelerator pedal is released; smooth, progressive **hydrostatic braking** automatically brings the truck to a stop. It is not necessary to move the foot to another pedal.
- Thanks to the spacious cabin, there is sufficient **room for movement** even when the seat is swivelled to 17°.
- The operator's right arm rests **comfortably** on the height adjustable armrest. Where the finger-tip Linde Load Control is also integrated.
- Linde hydrostatic transmission ensures matchless precision, with —

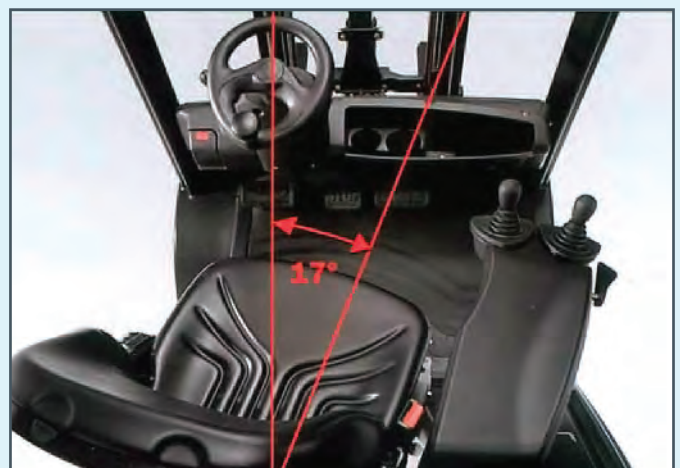
features

that are especially important where complex maneuvering is involved.

controls
 ated for easy
 d intuitive use.
 e operator's seat
 n be swivelled
 to the right for
 ery reversing
 maneuver.

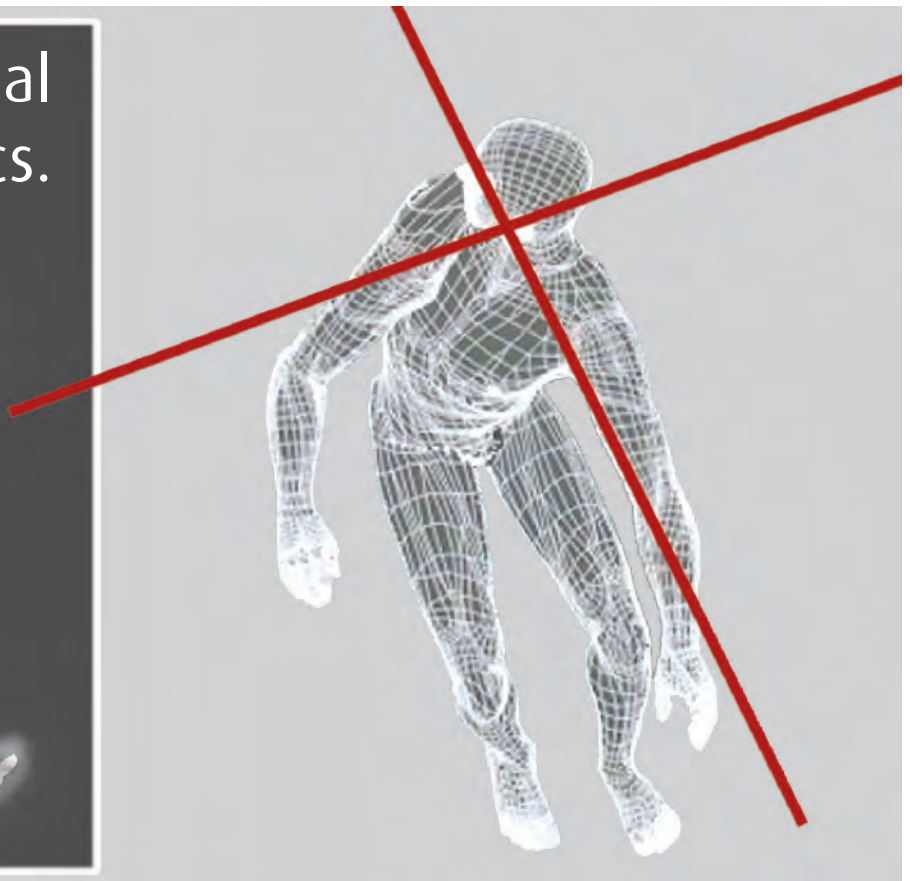
**12°
 more view
 with the
 swivelling
 seat!**

Scientifically verified:
 the swivelling seat makes
 the operator's task much easier
 and improves safety, thanks to the
 increased field of vision to the rear.



Professional ergonomics.

Tested by professionals.



In its "comparative, ergonomic investigation of the forklift truck" the school of ergonomics at the Technical University of Munich analyzed and compared various working seats.

Along side comprehensive practical tests, computer simulations were carried out with the CAD-based model human RAMSIS. The results speak for themselves:

- The swivelling seat in the Linde truck reduces the twisting of the torso and body by 13.9°.
- In combination with Linde twin accelerator pedals, both legs are comfortably positioned with minimal stress on joints.
- The visibility improved by 11.6° in a 17° swivelled seat with Linde twin accelerator pedals.



Figures to impress: With the optional swivelling operator's seat fitted to the Linde 393 series, efficiency and economy are significantly improved.

For more information on Linde material handling equipment, please contact:

KION North America Corporation
2450 West 5th North Street, Summerville, SC 29483
Phone: (843) 875-8000 Truck Sales Fax: (843) 875-8471
E-mail: trucksales.na@kiongroup.com
www.kion-na.com

Linde Material Handling