

LOADED CONTAINER HANDLER

SDCY410K5H4

STANDARD FEATURES

- ➔ Safety features include LED work light package, alarm system, reverse camera, object detection system and a dry chemical fire suppression system
- ➔ Components from brands you know and trust including Cummins, Dana, Kessler, and Parker
- ➔ Powered Pile Slope and vertical twist-lock on the spreader
- ➔ Elevated Cab

90,390 lbs

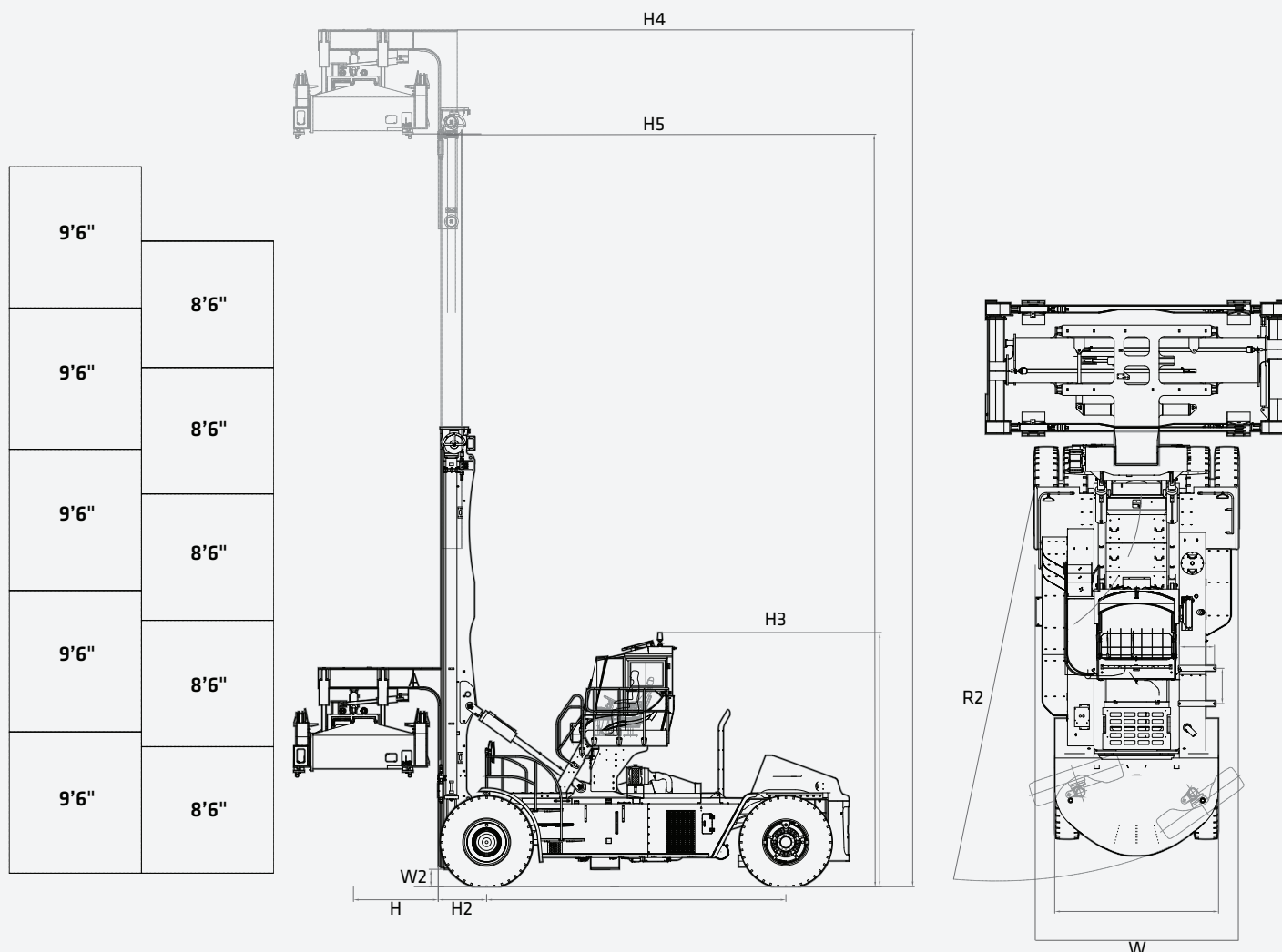
Max. Load

19' 8"

Wheelbase

5 (8' 6" / 9' 6")

Stacking Height



STANDARD AND OPTIONAL EQUIPMENT

s = standard / o = optional

SDCY410K5H4	ENGINE
s	Cummins QSL9 Diesel Engine with 350HP
s	Tier 4 Final EPA Emissions Compliant
s	24V, 100A Alternator
s	High Intake, Long Life Air Filter w/ Safety Element
s	Automatic Fire Extinguisher
s	500 Hour Oil Maintenance Interval
o	Engine Block Heater
DRIVETRAIN	
s	Dana HR3600 Transmission
s	3 FWD & 3 REV Gears
s	Kessler D102 Planetary Drive Axle w/ Wet Brakes
s	18.00 x 33 36 Ply Drive and Steer Pneumatic Tires
HYDRAULIC SYSTEM	
s	Efficient Load Sensing Hydraulic System
s	Optimized Automatic Throttle Up During Lifting Operations
s	SDJ450H 20'/40' Container Spreader for Single Stack ISO Containers
s	Spreader Equipped with Rotation and Powered Pile Slope
s	Wide Twist Lock Spreader for 8'6" and 9'6" Wide Containers
s	Side Shift up to 12" in Both Directions
s	Hydraulic Accumulator on Lift Circuit
s	Spreader Twist Lock Indicator Lights
OPERATOR'S STATION	
s	Enclosed High Visibility Cabin
s	High Mounted Cabin
s	Mechanical Full Suspension Cloth Seat (Grammer)
o	Air Ride, Full Suspension Cloth Seat (Grammer)
s	Ergonomic Multi-Function Joy Stick
s	Intuitive Display Panel
s	Steering Wheel w/ Spinner Knob
s	24V to 12V DC/DC converter
s	Rubber Floor Mat
s	Operator Presence and Restraint System
s	Rubber Mount Isolators to Reduce Cabin Vibrations



*Warranty applies to 2023 Forklift, Container Handler and Reach Stacker models only.

STANDARD AND OPTIONAL EQUIPMENT

s = standard / o = optional

SDCY410K5H4 OPERATOR'S STATION (CONTINUED)	
s	Automatic Climate Control with A/C and Heat
s	Reverse Camera w/ 7" Display
s	Object Detection Sensor up to 10' in Reverse Direction
o	Object Detection Sensor up to 16' in Reverse Direction
s	Telescoping and Tilting Steering Column
s	Front, Top and Rear Wipers
s	Recirculation Fan
s	Top Sun Shade
o	Training Seat
o	Additional Hour Meter (Located in Dash)
o	Reading Light
o	12V - 10A Power Supply
s	Radio System (Includes Radio, Speakers and Antenna)
o	Auxiliary Equipment Mounting Shelf
ELECTRICAL	
s	Automatic Greasing Systems for Spreader and Truck
s	Locking Fuel Cap
o	Cold Climate System: For Temperatures Down to -22°F
o	Empty Seat Shut Down (Factory Preset is 15 Minutes)
s	Lockable Battery Disconnect
s	Operator, Service and Parts Manuals (English)
s	Electric Horn
s	Wide Angle Mirrors
o	Twist Lock Counter
s	2 Front Facing Fender Mounted LED Lights
s	4 Forward Facing Cabin Mounted LED Work Lights
s	2 Rear Facing Mast Mounted LED Lights
s	2 Rear Facing Counterweight Mounted LED Lights
s	4 Spreader Mounted LED Lights
s	Indicator and Hazard lights
s	Rotating Amber Beacon on Boom



elevex.ca

PRODUCT SPECIFICATIONS LOADED CONTAINER HANDLER ||| SDCY410K5H4

WORKING RANGE

SPECIFICATIONS

GENERAL

Stacking Height, 9' 6" / 8' 6"	5 / 5 High	
Load Capacity		
Mast Extended	77,160 lbs	35 000 kg
Mast Retracted	90,390 lbs	41 000 kg
Wheelbase	236"	6 000 mm
Fuel Tank Capacity	185 gal	700 l
Hydraulic Tank Capacity		
Main	185 gal	700 l
DEF	10 gal	38 l

WEIGHTS

Truck Weight, Unloaded	174,200 lbs	79 000 kg
Axle Weight, Loaded		
Front	244,500 lbs	110 900 kg
Rear	20,060 lbs	9 100 kg
Axle Weight, Unloaded		
Front	114,000 lbs	51 700 kg
Rear	60,190 lbs	27 300 kg

TIRES

Tire Type	Pneumatic	
Front Tires	18.00-33 36PR	
Rear Tires	18.00-33 36PR	
Number of Tires, Front / Rear	4 / 2	
Front Track Width	119"	3 033 mm
Rear Track Width	110"	2 790 mm

PERFORMANCE

Travel Speed Loaded / Unloaded	13.7 / 15.5	22 / 25
Lift Speed Loaded / Unloaded	43 / 59	0.22 / 0.30
Lower Speed Loaded / Unloaded	59 / 49	0.30 / 0.25
Drawbar Max.	60,700 lbs	270 kN
Gradeability @ 1 mph (1.6 km/h)(w/load)	22%	

MISCELLANEOUS

Fuel Tank Capacity	185 gal	700 l
Hydraulic Tank Capacity	185 gal	700 l
DEF Tank Capacity	10 gal	38 l

In the interest of continual equipment development, SANY America Inc. reserves the right to change these specifications at any time without prior notification.

* All imperial numbers have been rounded to the nearest whole number.

Ratings are based on ISO 10567:2007. Lift capacity does not exceed 75% of tipping load with the machine on firm, level ground or 87% of hydraulic lifting capacity.

POWERTRAIN

Fuel Type	Diesel	
Engine Manufacturer & Model	Diesel QSL 9	
Emissions Tier	Tier 4 Final	
Engine Rated Power @ Rated RPM	350 HP	261 kW
Maximum Engine Torque @ RPM	1,200 @ 1,500 ft-lb	1 628 @ 1 500 Nm
Governed Speed	2,100 RPM	
Number of Cylinders / Displacement	6 / 8.9 l	
Turbocharger	Variable Geometry	
Alternator Rate Output	100A	
Drive Axle Manufacturer & Model	Kessler D102	
Transmission Type	Powershift	
Transmission Manufacturer & Model	Dana 15.5HR36000	
Number of Gears Forward / Reverse	4 / 4	
System Voltage / Battery Capacity	24 V / 165 Ah	
Service Brake	Wet Disc	
Parking Brake	Dry Disc	

STANDARD MAST & SPREADER

Mast Type	Duplex	
Free Lift Height	--	--
Lift Height, Under Twistlocks Max.	591"	15 000 mm
Lift Height, Under Twistlocks Min.	87"	2 200 mm
Mast Height Lowered	365"	9 270 mm
Mast Height Extended, Top of Spreader	677"	17 190 mm
Spreader Adjustment, Min. / Max.	238-480"	6 053 / 12 185 mm
Sideshift Distance	12"	+/- 300 mm
Pile Slope Type	Powered	
Pile Slope	+/- 5°	
Slewing	+/- 3°	

DIMENSIONS

Mast Tilt, Fwd / Back (α / β)	5° / 10°	
H Load Center	5' 7"	1 700 mm
H2 Load Distance	3' 2"	971 mm
H3 Cab Height w/ Beacon	16' 9"	5 098 mm
H4 Mast Height Extended, Top of Spreader	677"	17 190 mm
H5 Lift Height, Under Twistlocks Max.	591"	15 000 mm
Length to Load Face	27'	8 235 mm
W Overall Width w/o Spreader	13' 6"	4 118 mm
W2 Minimum Ground Clearance	1' 2"	350 mm
Minimum Aisle Width (20' Container)	39' 11"	12 160 mm
Minimum Aisle Width (40' Container)	49' 7"	15 110 mm
Operator Seat Height	11' 7"	3 537 mm
R2 Outside Turning Radius	26' 7"	8 100 mm

LIFTING PERFORMANCE



MONTREAL (Head office)
100A, Hymus Blvd.
Pointe-Claire (Québec) H9R 1E4

Phone: 514 694-4223
Toll free: 1 866 421-4223

info@elevex.ca

QUEBEC
1279, Paul-Émile Giroux St. Suite
200 Québec (Québec) G1C 0K9

SAGUENAY
2305, Alexis-Le-Trotteur
St. Jonquière (Québec) G7X 9H8