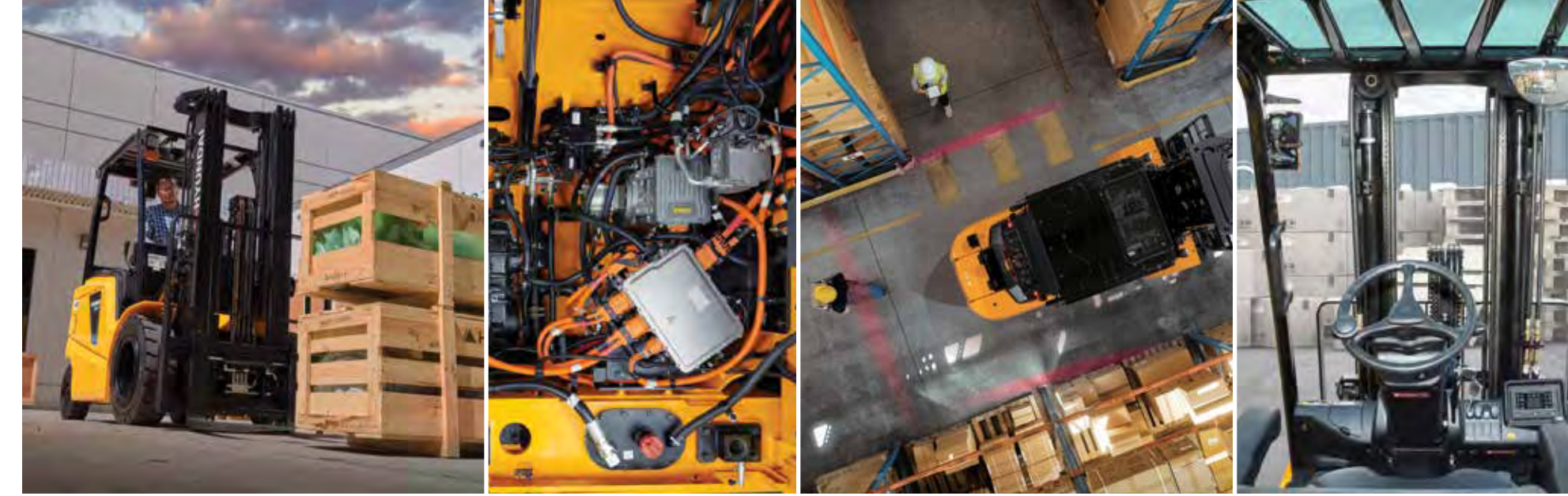


2026 FULL PRODUCT LINE





SUPERIOR PERFORMANCE AND TECHNOLOGY. THE HYUNDAI ADVANTAGE.

Innovation is the hallmark of the Hyundai brand. Over the decades, Hyundai has earned a reputation for building equipment that offers the world's most advanced technology. But it is not simply technology for its own sake. Every advancement and innovation has a direct benefit to equipment owners and operators.

More productivity. Greater efficiency. Outstanding economy. Bullet-proof reliability. Enhanced comfort and safety. Simplified maintenance. Superior fuel economy. All with an eye to a higher level of sustainability. Each of these is the result of Hyundai's commitment to making technology serve the needs of our customers.

Whether its electric, LP, or diesel, you will find a lineup of equipment that incorporates the most innovative thinking in the material handling industry. Whatever the application or environment, Hyundai offers a forklift engineered to meet and exceed your specifications and expectations.

From advanced telematics to the latest in Li-Ion batteries, Hyundai brings you the solutions you need to compete ever more successfully in an ever more competitive world. That is why we can say with confidence that No One Delivers More than Hyundai. You will find the proof in the pages of this brochure.



HERE'S WHAT'S NEW FOR 2026.

For 2026, we've introduced exciting, new models that bring you even more innovative solutions to virtually every material handling challenge:

40/45/50/55 B-X and **60/70/80/90 B-X** High voltage electric models that deliver performance comparable to diesel forklifts in any outdoor environment. See page 11.

15/18/20/23 BRP-X Reach trucks with new high-precision joystick controls that match the industry standard to eliminate any operator learning curve. See page 12.

35/45/55 LC-9 Large cushion tire, LPG models with big payloads and performance features competitors can't match, including a new boxcar special. See page 18.

25/30 G-9A, 35GN-9A Dual fuel forklifts that seamlessly switch from LPG to gasoline and are ideal for the forklift rental market. See page 19.

35D/45D, 50DN-9VB Eco-friendly diesels that fully meet Tier 4 final regulations and deliver superior fuel efficiency and optimized performance. See page 21.

50/70/80 D-9V Our latest line of powerful diesels that meet Tier 4 regulations. See page 23.

MORE RESOURCES TO HELP YOU DO MORE AND SAVE MORE.

With load capacities from 2,200 to 55,000 lbs., Hyundai Material Handling offers a hundred different model configurations to choose from. But beyond the breadth of our line is an array of advanced resources to bring you an unmatched level of productivity, reliability and economy.



Hi-Mate is the industry's most advanced remote management system. It takes the concept of telematics to a higher level with continuous data collection, real time monitoring of key components, impact monitoring, equipment status, and human resource management. And, of course, it can be fully integrated into the best forklifts in the world: Hyundai.



Hyundai is a leader in the development of advanced **Li-ion battery** technology. Operations large and small are benefiting from the extended runtimes, fast charging, reduced maintenance, lower infrastructure costs, and greater productivity Hyundai's Li-ion batteries deliver.



Throughout our line, you'll find the most innovative technology on the market to power your operation. And your authorized Hyundai dealer is your connection to the vast resources of the North American and global Hyundai network.

ELECTRIC FORKLIFTS THAT DELIVER MORE

More versatility. More maneuverability. More dependability. And now more choices. Our 2026 lineup includes new High Voltage models and new Reach Trucks. And we still offer a wide array of three- and four-wheel models, with cushion and pneumatic tires, and sit-down and stand-up configurations. All in a capacity range from 3,000 to 20,000 lbs.

Throughout line, you'll find advanced features, like Li-ion batteries that deliver outstanding performance and opportunity charging with minimal maintenance. Plus, our exclusive multifunction digital clusters that display essential information in real time.

Your operation will profit from forklifts that offer faster working speeds to move more pallets per hour, while your operators will be more productive with spacious cabs and ergonomic features like suspension seats.

All of this makes Hyundai electric forklifts your best choice for a wide range of applications indoors and out, including warehousing, manufacturing, food & beverage, retail & ecommerce, home centers, precast concrete, forestry, lumber, and nurseries.



ELECTRIC RIDER FORKLIFTS



15/18/20 BCS-9U

Stand Up Counter Balance Forklift
3,000 - 4,000 lbs. capacity · Urethane Tire



15/18/20 BT-9U

Three Wheel Forklift 36V/48V
3,000 - 4,000 lbs. capacity · Pneumatic Tire

			15BCS-9	18BCS-9	20BCS-9	15BT-9U	18BT-9U	20BT-9U
Identification	Load Capacity	lb	3,000	3,500	4,000	3,000	3,500	4,000
	Load Center	in	18	18	18.4	24	24	24
Weights	Service Weight	lb	8,514	8,981	9,283	6,874	7,511	7,809
	Axle-loading, Loaded Front / Rear	lb	9,823 / 1,691	11,003 / 1,552	11,636 / 1,646	8,842 / 1,032	9,748 / 1,263	10,572 / 1,237
	Axle-loading, Unloaded Front / Rear	lb	4,380 / 4,133	4,411 / 4,510	4,554 / 4,729	3,646 / 3,228	3,838 / 3,673	3,804 / 4,005
Wheels, Chassis, Tire Type			Urethane	Urethane	Urethane	Superelastic	Superelastic	Superelastic
Dimensions	Overhead Guard Height	in	87.9	87.9	87.9	83.1	83.1	83.1
	Length to Face of Forks	in	67.99	67.99	70.74	78.35	78.3	79.72
	Overall Width	in	42	42	42	42.3	43.5	43.5
	Turning Radius	in	55	55	57.75	60.6	64.2	65.4
Right-angle Stacking Aisle Width 40" x 48"		in	120.3	120.3	123	127	131.3	132.4
Right-angle Stacking Aisle Width 48" x 32"		in	125.1	125.1	127.8	132	136.2	137.4
Performance	Travel Speed Loaded / Unloaded	mph	7.5 / 7.5	7.5 / 7.5	7.5 / 7.5	9.9 / 9.9	9.9 / 9.9	9.9 / 9.9
	Drive Motor Rating	hp	5.7 x 2	5.7 x 2	5.7 x 2	9.8 x 2	9.8 x 2	9.8 x 2
	Pump (Lift) Motor Rating	hp	18.8	18.8	18.8	27.2	27.2	27.2
	Battery Voltage	v	36	36	36	36 / 48	36 / 48	36 / 48
	Battery Compartment (L x W x H)*	in	38.7 x 18 x 32	38.7 x 18 x 32	38.7 x 18 x 32	38.7 x 21.8 x 25.6	38.7 x 25.1 x 25.6	38.7 x 25.1 x 25.6
Others	Type of Drive Control		AC	AC	AC	AC	AC	AC

* In this case the Length = the dimension from the left side of the rear counterweight to the right. The Width = the dimension from the rear of the truck to the forks.



25/30/32 BC-9U

Four Wheel Forklift 36V/48V
5,000 - 6,500 lbs. capacity · Cushion Tire



16/20 B-9

Four Wheel Forklift 48V
3,200 - 4,000 lbs. capacity · Pneumatic Tire



25/30/32/35 B-X

Four Wheel Forklift 48V
5,000-7,000 lbs. capacity · Pneumatic Tire



25/30/32/35 B-9U

Four Wheel Forklift 36/48V
5,000-7,000 lbs. capacity · Pneumatic Tire

			25BC-9U	30BC-9U	32BC-9U
Identification	Load Capacity	lb	5,000	6,000	6,500
	Load Center	in	24	24	24
Weights	Service Weight	lb	9,824	10,913	11,413
	Axle-loading, Loaded Front / Rear	lb	13,457 / 1,878	15,424 / 2,110	16,096 / 15,600
	Axle-loading, Unloaded Front / Rear	lb	3,975 / 5,847	4,284 / 6,636	4,213 / 7,198
Wheels, Chassis, Tire Type			Cushion	Cushion	Cushion
Dimensions	Overhead Guard Height	in	88	88	88
	Length to Face of Forks	in	85	89	90
	Overall Width	in	44	44	44
	Turning Radius	in	75	78	79
Right-angle Stacking Aisle Width 40" x 48"		in	140	143	144
Right-angle Stacking Aisle Width 48" x 32"		in	147	151	152
Performance	Travel Speed Loaded / Unloaded	mph	9.3 / 10.6	9.3 / 10.6	9.3 / 10.6
	Drive Motor Rating	hp	18.7	18.7	25.2
	Pump (Lift) Motor Rating	hp	22.8	22.8	30.5
	Battery Voltage	v	36 / 48	36 / 48	36 / 48
	Battery Compartment (L x W x H)*	in	39.2 x 30.8 x 23.8	39.2 x 34.8 x 23.8	39.2 x 34.5 x 23.8
Others	Type of Drive Control		AC	AC	AC

			16B-9	20B-9
Identification	Load Capacity	lb	3,200	4,000
	Load Center	in	24	24
Weights	Service Weight	lb	6,945	7,672
	Axle-loading, Loaded Front / Rear	lb	9,259 / 1,213	10,692 / 1,389
	Axle-loading, Unloaded Front / Rear	lb	3,494 / 3,450	3,637 / 4,034.5
Wheels, Chassis, Tire Type			Solid Pneumatic	Solid Pneumatic
Dimensions	Overhead Guard Height	in	83.1	83.1
	Length to Face of Forks	in	80.1	83.8
	Overall Width	in	42.3	43.5
	Turning Radius	in	68.2	71.6
Right-angle Stacking Aisle Width 40" x 48"		in	132	135.7
Right-angle Stacking Aisle Width 48" x 32"		in	138	141.5
Performance	Travel Speed Loaded / Unloaded	mph	9.9 / 10.6	9.9 / 10.6
	Drive Motor Rating	hp	8.5 x 2	8.5 x 2
	Pump (Lift) Motor Rating	hp	25.2	25.2
	Battery Voltage	v	48	48
	Battery Compartment (L x W x H)*	in	38.7 x 21.7 x 25.6	38.7 x 25.1 x 25.6
Others	Type of Drive Control		AC	AC

* In this case the Length = the dimension from the left side of the rear counterweight to the right.
The Width = the dimension from the rear of the truck to the forks.

			25B-X	30B-X	32B-X	35B-X	25B-9U	30B-9U	32B-9U	35B-9U
Identification	Load Capacity	lb	5,000	6,000	6,400	7,000	5,000	6,000	6,500	7,000
	Load Center	in	24	24	24	24	24	24	24	24
Weights	Service Weight	lb	10,340	11,306	11,746	12,291	9,612	10,214	10,626	11,067
	Axle-loading, Loaded Front / Rear	lb	13,910 / 1,932	15,807 / 2,099	16,524 / 2,262	17,489 / 2,506	12,814 / 1,798	15,018 / 1,808	15,642 / 2,039	16,616 / 2,167
	Axle-loading, Unloaded Front / Rear	lb	5,024 / 5,317	5,317 / 5,991	5,335 / 6,411	5,247 / 7,044	3,979 / 5,633	4,445 / 5,769	4,365 / 6,261	4,222 / 6,845
Wheels, Chassis, Tire Type			Pneumatic, Superelastic	Pneumatic, Superelastic	Pneumatic, Superelastic	Pneumatic, Superelastic	Solid Pneumatic	Solid Pneumatic	Solid Pneumatic	Solid Pneumatic
Dimensions	Overhead Guard Height	in	85.6	85.6	85.6	85.6	89.6	89.6	89.6	89.6
	Length to Face of Forks	in	92.5	95	97	99	90.3	97.8	98.5	102
	Overall Width	in	48	48	48	48	47.2	47.2	47.2	49.2
	Turning Radius	in	82	84.4	86	88	76.3	84.6	85.2	86.8
Right-angle Stacking Aisle Width 40" x 48"		in	147	150	152	153	143.2	150.7	151.3	153.4
Right-angle Stacking Aisle Width 48" x 32"		in	155	158	160	161	149.7	157.8	158.4	160.5
Performance	Travel Speed Loaded / Unloaded	mph	10 / 11	10 / 11	10 / 11	10 / 11	10.6 / 11.2	10.6 / 11.2	10.6 / 11.2	10.6 / 11.2
	Drive Motor Rating	hp	18.8	18.8	18.8	18.8	12.6	12.6	12.6	12.6
	Pump (Lift) Motor Rating	hp	20.1	20.1	20.1	20.1	30.6	30.6	30.6	30.6
	Battery Voltage	v	48	48	48	48	36 / 48	36 / 48	36 / 48	36 / 48
	Battery Compartment (L x W x H)*	in	38.7 x 18.3 x 30.1	38.7 x 21.1 x 30.1	38.7 x 21.1 x 30.1	38.7 x 21.1 x 30.1	40.7 x 31.5 x 21.2	40.7 x 39.4 x 21.2	40.7 x 39.4 x 21.2	40.7 x 39.4 x 21.2
Others	Type of Drive Control		AC	AC	AC	AC	AC	AC	AC	AC

* In this case the Length = the dimension from the left side of the rear counterweight to the right.
The Width = the dimension from the rear of the truck to the forks.

ELECTRIC RIDER FORKLIFTS



25/30/35 BH-9
Four Wheel Forklift 80V
5,000-7,000 lbs. capacity · Pneumatic Tire



40/45/50 B-9
Four Wheel Forklift 80V
8,000-10,000 lbs. capacity · Pneumatic Tire

			25BH-9	30BH-9	35BH-9	40B-9	45B-9	50B-9
Identification	Load Capacity	lb	5,000	6,000	7,000	8,000	9,000	10,000
	Load Center	in	24	24	24	24	24	24
Weights	Service Weight	lb	10,384	11,310	12,331	15,113	16,193	17,207
	Axle-loading, Loaded Front / Rear	lb	13,977 / 1,918	15,955 / 1,969	17,756 / 2,317	21,050 / 2,881	23,052 / 3,062	24,983 / 3,225
	Axle-loading, Unloaded Front / Rear	lb	5,115 / 5,269	5,655 / 5,655	5,686 / 6,671	7,725 / 7,388	8,060 / 8,133	8,331 / 8,876
Wheels, Chassis, Tire Type			Solid Pneumatic	Solid Pneumatic	Solid Pneumatic	Solid Pneumatic	Solid Pneumatic	Solid Pneumatic
Dimensions	Overhead Guard Height	in	87	87	87	91.3	91.3	91.3
	Length to Face of Forks	in	93.1	98.2	102.4	117.9	117.9	119.7
	Overall Width	in	47	47	49	54.17	54.17	56
	Turning Radius	in	78.7	83.7	87.9	105.1	105.1	106.5
Right-angle Stacking Aisle Width 40" x 48"		in	145	149.5	154.2	173.4	173.4	175.0
Right-angle Stacking Aisle Width 48" x 32"		in	152	156.9	161.5	181.3	181.3	182.9
Performance	Travel Speed Loaded / Unloaded	mph	11.2 / 11.8	11.2 / 11.8	11.2 / 11.8	11.2 / 11.2	11.2 / 11.2	11.2 / 11.2
	Drive Motor Rating	hp	14.3 x 2	14.3 x 2	14.3 x 2	18 x 2	18 x 2	18 x 2
	Pump (Lift) Motor Rating	hp	35.4	35.4	35.4	50.2	50.2	50.2
	Battery Voltage	v	80	80	80	80	80	80
	Battery Compartment (L x W x H)*	in	40.5 x 28.1 x 31.2	40.5 x 33 x 31.2	40.5 x 33 x 31.2	40.7 x 39.5 x 30.9	40.7 x 39.5 x 30.9	40.7 x 39.5 x 30.9
Others	Type of Drive Control		AC	AC	AC	AC	AC	AC

* In this case the Length = the dimension from the left side of the rear counterweight to the right.
The Width = the dimension from the rear of the truck to the forks.

HIGH VOLTAGE ELECTRIC FORKLIFTS

Our new high-voltage B-X line offers you power comparable to diesels without all the emissions, noise, and costly maintenance. The B-X line is engineered for the harshest outdoor climates and offers fast charging with up to 12 hours of operation on a 2-hour charge.



40/45/50/55 B-X
Four Wheel Forklift 309.1V
9,000 - 12,000 lbs. capacity · Pneumatic Tire



60/70/80/90 B-X
Four Wheel Forklift 347.7V
13,500 - 20,000 lbs. capacity · Pneumatic Tire

			40B-X	45B-X	50B-X	55B-X	60B-X	70B-X	80B-X	90B-X
Identification	Load Capacity	lb	9,000	10,000	11,000	12,000	13,500	15,500	17,500	20,000
	Load Center	in	24	24	24	24	24	24	24	24
Weights	Service Weight	lb	14,356.5	15,207.5	16,133.4	16,133.4	21,393.7	22,518	25,800.7	28,880.6
	Axle-loading, Loaded Front / Rear	lbs	20,648.5 / 2,526.5	22,295.3 / 2,832.9	23,951 / 3,205.5	23,951 / 3,205.5	30,364 / 4,257	33,479 / 4,471	38,426 / 5,011	42,962 / 5,761
	Axle-loading, Unloaded Front / Rear	lbs	7,350.2 / 7,044	7,334.8 / 7,874.9	7,328.2 / 8,807.5	7,334.8 / 7,874.9	10,178 / 11,215	9,927 / 12,590	11,689 / 14,112	12,644 / 16,237
Wheels, Chassis, Tire Type			Pneumatic	Pneumatic	Pneumatic	Pneumatic	Pneumatic	Pneumatic	Pneumatic	Pneumatic
Dimensions	Overhead Guard Height	in	87.4 (cab. 93.1)	87.4 (cab. 93.1)	87.8 (cab. 92.9)	87.8 (cab. 92.9)	101 (cab. 102)	101 (cab. 102)	104 (cab. 105)	104 (cab. 105)
	Length to Face of Forks	in	130.4	130.4	133.3	133.3	145	145	149.3	152.6
	Overall Width	in	55.8 / 68.7	55.8 / 68.7	55.8 / 68.7	55.8 / 68.7	82.3	82.3	86.4	89.2
	Turning Radius	in	117.6	117.6	120.2	120.2	133.1	133.1	142.6	142.6
Right-angle Stacking Aisle Width 40" x 48"		in	186.9	186.9	190.2	190.2	204.4	204.4	217	217
Right-angle Stacking Aisle Width 48" x 32"		in	194.8	194.8	198.0	198.0	212.3	212.3	225	225
Performance	Travel Speed Loaded / Unloaded	mph	15.8 / 16.1	15.8 / 16.1	15.8 / 16.1	15.8 / 16.1	16 / 17	16 / 17	17 / 20.5	17 / 20.5
	Drive Motor Rating	hp	87.2	87.2	87.2	87.2	100.6	100.6	100.6	100.6
	Pump (Lift) Motor Rating	hp	44.2	44.2	44.2	44.2	44.3	44.3	44.3	44.3
	Battery Voltage, Nominal Capacity K5	V / Ah	309.1 / 173	309.1 / 173	309.1 / 173	309.1 / 173	347.7 / 200 (268)	347.7 / 200 (268)	347.7 / 200 (268)	347.7 / 200 (268)
	Battery Weight	lbs	1574.1	1574.1	1574.1	1574.1	1,695 / 1,977	1,695 / 1,977	1,695 / 1,977	1,695 / 1,977
Others	Type of Drive Control		AC	AC	AC	AC	AC	AC	AC	AC

* In this case the Length = the dimension from the left side of the rear counterweight to the right.
The Width = the dimension from the rear of the truck to the forks.



13BOP-9

Order Picker

3,000 lbs. capacity · Polyurethane Tire
2,300 lbs. capacity Auxiliary Lift option available



15/18/20/23 BRP-X

Pantograph Reach Truck

3,000 - 4,500 lbs. capacity · Polyurethane Tire



15/18/20/25 BR-X

Moving Mast Reach Truck

3,000-5,000 lbs. capacity · Polyurethane Tire



16/20 BRJ-9

Moving Mast Reach Truck

3,200-4,000 lbs. capacity · Polyurethane Tire

		13BOP-9		15BRP-X		18BRP-X		20BRP-X		23BRP-X	
Identification	Load Capacity	lb	3,000	3,000	3,500	4,000	4,500				
	Load Center	in	24	24	24	24	24				
	Operator Type		Standing	Standing	Standing	Standing	Standing				
Weights	Service Weight	lb	6,470	8,781	7,408	7,727	8,600				
	Axle-loading, Reach-in, Unloaded Front/Rear	lb	1,634 / 7,701	3,512 / 5,269	2,879 / 4,528	6,044 / 4,683	3,406 / 5,194				
	Axle-loading, Reach-out, Unloaded Front/Rear	lb	3,448 / 3,020	7,143 / 4,638	7,030 / 3,878	7,762.5 / 3,964	8,576 / 4,524				
Wheels, Chassis	Tire Type (load / drive / caster)		Polyurethane / Solid Rubber	Polyurethane / Solid Rubber	Polyurethane / Solid Rubber	Polyurethane / Solid Rubber	Polyurethane / Solid Rubber				
	Service Brake		Electromagnetic Brake	Electromagnetic Brake	Electromagnetic Brake	Electromagnetic Brake	Electromagnetic Brake				
Dimensions	Overhead Guard Height	in	89	94.5	94.5	94.5	94.5				
	Reach Stroke	in	N/A	42.8	23.3	23.3	23.3				
	Outrigger Inner Dimension	in	40.2 / 49.2	34-50	34-50	34-50	34-50				
	Overall Length	in	117.3	104.3**	93.2**	95.2**	97**				
Performance	Turning Radius (in standard battery compartment)	in	71.6	74.5	66.5	68.5	72.9				
	Travel Speed Loaded / Unloaded	mph	7.5 / 7.5	7.3 / 7.3	7.3 / 7.3	7.3 / 7.3	7.3 / 7.3				
Performance	Drive Motor Rating	hp	7.8	12.2	12.2	12.2	12.2				
	Pump (lift) Motor Rating	hp	16.4	28.7	28.7	28.7	28.7				
	Maximum Battery Voltage	v	24 / 36	36	36	36	36				
	Battery Compartment (L x W x H)*		38.3 x 16.5 x 32.4	Add'l Compartment Widths***	Add'l Compartment Widths***	Add'l Compartment Widths***	Add'l Compartment Widths***				
Others	Type of Drive Control		AC	AC	AC	AC					

* In this case the Length = the dimension from the left side of the rear counterweight to the right. The Width = the dimension from the rear of the truck to the forks.

** Varies dependent upon battery compartment size

*** Available in 14.3" - 20.7". Varies by Battery Type.

				15BR-X		18BR-X		20BR-X		25BR-X		16BRJ-9		20BRJ-9	
Identification	Load Capacity	lb		3,000	3,500	4,000	5,000					3,200	4,000		
	Load Center	in		24	24	24	24					24	24		
	Operator Type			Standing	Standing	Standing	Standing					Seated	Seated		
Weights	Service Weight	lb		5,051	5,093	6,137	6,389					7,185	8,375		
	Axle-loading, Reach-in, Unloaded Front/Rear	lb		1,790 / 3,260	1,649 / 3,444	2,167 / 3,971	1,997 / 4,392					4,442 / 2,743	4,954 / 3,422		
	Axle-loading, Reach-out, Unloaded Front / Rear	lb		7,308 / 1,049	8,027 / 1,034	9,385 / 1,161	10,666 / 1,235					1,345 / 9,367	1,391 / 11,393		
	Axle-loading, Reach-in, Loaded Front/Rear	lb		5,573 / 2787	5,635 / 3,425	6,826 / 3,721	7,145 / 4,755					3,871 / 6,841	4,200 / 8,587		
Wheels, Chassis	Tire Type (load / drive / caster)			Polyurethane / Solid Rubber	Polyurethane / Solid Rubber	Polyurethane / Solid Rubber	Polyurethane / Solid Rubber					Polyurethane / Solid Rubber	Polyurethane / Solid Rubber		
	Service Brake			Disc	Disc	Disc	Disc					Electric	Electric		
Dimensions	Overhead Guard Height	in		89.6	89.6	90.3	90.3					83.3	84.1		
	Reach Stroke	in		19	26	24	32					22.1	21.8		
	Outrigger Inner Dimension	in		30.4 / 42.1	30.4 / 42.1	30.8 / 46.9	30.8 / 46.9					50.4 / 50	50.8 / 50		
	Turning Radius (in standard battery compartment)	in		62.8	69.9	70.5	78.0					66.3	68.6		
Performance	Travel Speed loaded / unloaded	mph		6.2 / 6.2	6.2 / 6.2	6.6 / 6.5	6.5 / 6.5					8.7 / 8.7	8.7 / 8.7		
	Drive Motor Rating	hp		8	8	8	8					10	10		
	Pump (lift) Motor Rating	hp		16	16	18.7	18.7					18.7	18.7		
	Maximum Battery Voltage	v		48	48	48	48					48	48		
	Battery Compartment (L x W x H)*			39.1 x 14.9 x 22.9	39.1 x 14.9 x 22.9	39.1 x 14.9 x 22.9	39.1 x 14.9 x 22.9					Std: 48.6 x 11.3 x 31.6 Opt: 48.6 x 14.1 x 31.6	Std: 48.6 x 14.1 x 31.6 Opt: 48.6 x 17 x 31.6		
Others	Type of Drive Control		AC	AC	AC	AC					AC	AC			

* In this case the Length = the dimension from the left side of the rear counterweight to the right. The Width = the dimension from the rear of the truck to the forks.

LPG FORKLIFTS

THAT DELIVER MORE

More feature. More performance. More durability. And for 2026 more models, including our new large cushion tire and dual fuel forklifts. Our lineup includes cushion and pneumatic tire models with capacities from 3,000 to 15,500 lbs., all offering outstanding fuel efficiency with lower emissions.

Designed to handle the toughest jobs, Hyundai LPG forklifts offer you advanced features including our multifunction digital cluster, wet disc brakes, and power steering, that reduce your costs as they drive up your productivity.

With their powerful engines, outstanding maneuverability, and gradeability, Hyundai forklifts are built to handle a wide range of applications, including warehousing, manufacturing, precast concrete, lumber, freight handling, boxcars, and more.

Hyundai forklifts provide operators with greater comfort and safety, thanks to full suspension seats, ergonomic pedal designs, adjustable steering wheels, roomy cabs, controls that minimize fatigue and maximize productivity, and a comprehensive safety package that includes auto parking brakes, load weight indicators, and more.



LPG FORKLIFTS



15/18 LC-7M

LPG Forklift
3,000 - 3,500 lbs. capacity · Cushion Tire



20/25/30/33 LC-9

LPG Forklift
4,000-6,500 lbs. capacity · Cushion Tire

			15LC-7M	18LC-7M	20LC-9	25LC-9	30LC-9	33LC-9
Identification	Load Capacity	lb	3,000	3,500	4,000	5,000	6,000	6,500
	Load Center	in	24	24	24	24	24	24
Weights	Service Weight	lb	6,235	6,673	7,912	8,694	9,556	10,098
	Axle-loading, Loaded Front / Rear	lb	8,093 / 1,448	8,913 / 1,618	10,578 / 1,332	12,151 / 1,547	13,666 / 1,889	14,715 / 1,887
	Axle-loading, Unloaded Front / Rear	lb	2,425 / 3,809	2,284 / 4,389	3,721 / 4,191	3,570 / 5,124	3,376 / 6,180	3,563 / 6,536
Wheels, Chassis	Tire Size, Front		18 x 6 x 12	18 x 6 x 12	21 x 7 x 15	21 x 7 x 15	21 x 8 x 15	21 x 8 x 15
	Tire Size, Rear		14 x 5 x 10	14 x 5 x 10	16 x 6 x 10.5	16 x 6 x 10.5	16 x 6 x 10.5	16 x 6 x 10.5
Dimensions	Overhead Guard Height	in	84.4	84.4	81.3	81.3	81.3	81.3
	Length to Face of Forks	in	82.4	83.7	88.2	89.8	92.2	93.9
	Overall Width	in	38.6	38.6	42.1	42.1	43.7	43.7
	Ground Clearance, Loaded, Under Mast	in	3.5	3.5	3.5	3.5	3.5	3.5
	Turning Radius	in	74.5	75.6	78.5	80	82	82.7
Performance	Travel Speed Unloaded	mph	10.5	10.5	9.8	9.7	9.6	9.6
	Engine Manufacturer / Model		MMC / 2.0L	MMC / 2.0L	Hyundai / L4KB	Hyundai / L4KB	Hyundai / L4KB	Hyundai / L4KB
	Engine Power	hp @ rpm	48 @ 2,300 rpm	48 @ 2,300 rpm	60 @ 2,300 rpm	60 @ 2,300 rpm	60 @ 2,300 rpm	60 @ 2,300 rpm
	Engine Torque	lb-ft @ rpm	110 @ 1,600 rpm	110 @ 1,600 rpm	137 @ 1,800 rpm	137 @ 1,800 rpm	137 @ 1,800 rpm	137 @ 1,800 rpm
	No. of Cylinders / Cubic Capacity	# / cc	4 / 1,997	4 / 1,997	4 / 2,359	4 / 2,359	4 / 2,359	4 / 2,359
	Service Brake		Wet Disc	Wet Disc	Wet Disc	Wet Disc	Wet Disc	Wet Disc

* In this case the Length = the dimension from the left side of the rear counterweight to the right.
The Width = the dimension from the rear of the truck to the forks.



15/18/20 L-7M

LPG Forklift
3,000 - 4,000 lbs. capacity · Pneumatic Tire



25/30 L-9A, 35 LN-9A

LPG Forklift
5,000 - 7,000 lbs. capacity · Pneumatic Tire



35/40/45/50 L-9

LPG Forklift
8,000-11,000 lbs. capacity · Pneumatic Tire

			15L-7M	18L-7M	20L-7M	25L-9A	30L-9A	35LN-9A
Identification	Load Capacity	lb	3,000	3,500	4,000	5,000	6,000	7,000
	Load Center	in	24	24	24	24	24	24
Weights	Service Weight	lb	5,932	6,307	6,715	8,203	9,074	9,998
	Axle-loading, Loaded Front / Rear	lb	8,024 / 1,212	8,832 / 1,334	9,656 / 1,455	12,106 / 1,612	13,885 / 1,803	15,305 / 2,409
	Axle-loading, Unloaded Front / Rear	lb	2,623 / 3,307	2,528 / 3,778	2,438 / 4,275	3,306 / 4,844	3,505 / 5,569	3,195 / 6,802
Wheels, Chassis	Tire Size, Front		6.5 x 10 x 12PR	6.5 x 10 x 12PR	6.5 x 10 x 12PR	7 x 12 x 12PR	8.15 x 15 x 14PR	8.15 x 15 x 14PR
	Tire Size, Rear		5 x 8 x 10PR	5 x 8 x 10PR	5 x 8 x 10PR	6.5 x 10 x 12PR	6.5 x 10 x 12PR	6.5 x 10 x 12 PR
Dimensions	Overhead Guard Height	in	83.1	83.1	83.1	95.4	86.2	86.2
	Length to Face of Forks	in	88	89.2	90.9	102.6	105	109
	Overall Width	in	42.1	42.1	42.1	47.2	48.4	48.4
	Ground Clearance, Loaded, Under Mast	in	4.7	4.7	4.7	5.1	5.7	5.7
	Turning Radius	in	78.7	79.8	81.1	92.2	95	98
Performance	Travel Speed Unloaded	mph	12.5	12.5	12.5	11	11.6	11.6
	Engine Manufacturer / Model		Hyundai / L4KB	Hyundai / L4KB	Hyundai / L4KB	Hyundai / L4KB	Hyundai / L4KB	Hyundai / L4KB
	Engine Power	hp @ rpm	49 @ 2,450 rpm	49 @ 2,450 rpm	49 @ 2,450 rpm	59.5 @ 2,300 rpm	59.5 @ 2,300 rpm	59.5 @ 2,300 rpm
	Engine Torque	lb-ft @ rpm	118 @ 1,600 rpm	118 @ 1,600 rpm	118 @ 1,600 rpm	137 @ 1,800 rpm	137 @ 1,800 rpm	137 @ 1,800 rpm
	No. of Cylinders / Cubic Capacity	# / cc	4 / 2,359	4 / 2,359	4 / 2,359	4 / 2,359	4 / 2,359	4 / 2,359
	Service Brake		Wet Disc	Wet Disc	Wet Disc	Wet Disc	Wet Disc	Wet Disc

* In this case the Length = the dimension from the left side of the rear counterweight to the right.
The Width = the dimension from the rear of the truck to the forks.

			35L-9	40L-9	45L-9	50L-9
Identification	Load Capacity	lb	8,000	9,000	10,000	11,000
	Load Center	in	24	24	24	24
Weights	Service Weight	lb	12,798	13,995	14,749	15,659
	Axle-loading, Loaded Front / Rear	lb	17,979 / 2,526	19,978 / 2,835	21,817 / 2,851	23,686 / 2,930
	Axle-loading, Unloaded Front / Rear	lb	5,787 / 7,002	6,045 / 7,950	6,418 / 8,331	6,490 / 9,169
Wheels, Chassis	Tire Size, Front		8.25 x 15 x 14PR	7.5 x 16 x 12PR	7.5 x 16 x 12PR	7.5 x 16 x 12PR
	Tire Size, Rear		7 x 12 x 14PR	7 x 12 x 14PR	7 x 12 x 14PR	7 x 12 x 14PR
Dimensions	Overhead Guard Height	in	87	87	87	89
	Length to Face of Forks	in	122.4	124.6	129.3	131.8
	Overall Width	in	54	68.5	68.5	68.5
	Ground Clearance, Loaded, Under Mast	in	6.7	6.1	6.1	6.1
	Turning Radius	in	112.9	114.8	118.5	120.2
Performance	Travel Speed Unloaded	mph	19.7	18.6	18.5	18.5
	Engine Manufacturer / Model		Kubota / WG3800	Kubota / WG3800	Kubota / WG3800	Kubota / WG3800
	Engine Power	hp @ rpm	87.2 @ 2,450 rpm	87.2 @ 2,450 rpm	87.2 @ 2,450 rpm	87.2 @ 2,450 rpm
	Engine Torque	lb-ft @ rpm	214 @ 1,200 rpm	214 @ 1,200 rpm	214 @ 1,200 rpm	214 @ 1,200 rpm
	No. of Cylinders / Cubic Capacity	# / cc	4 / 2,969	4 / 3,769	4 / 3,769	4 / 3,769
	Service Brake		Wet Disc	Wet Disc	Wet Disc	Wet Disc

* In this case the Length = the dimension from the left side of the rear counterweight to the right.
The Width = the dimension from the rear of the truck to the forks.



70 L-7A

LPG Forklift
15,500 lbs. capacity · Pneumatic Tire



25/30 G-9A, 35 GN-9A

LPG/Gasoline Forklift
5,000 - 7,000 lbs. capacity · Pneumatic Tire

		70L-7A		25G-9A		30G-9A		35GN-9A	
Identification	Load Capacity	lb	15,500	5,000	6,000	7,000			
	Load Center	in	24	24	24	24			
Weights	Service Weight	lb	20,790		9,074	9,998			
	Axle-loading, Loaded Front / Rear	lb	32,108 / 4,114	12,106 / 1,612	13,885 / 1,803	15,305 / 2,409			
	Axle-loading, Unloaded Front / Rear	lb	8,525 / 12,267	3,306 / 4,844	3,505 / 5,569	3,195 / 6,802			
Wheels, Chassis	Tire Size, Front		8.25 x 15	7 x 12 x 12PR	8.15 x 15 x 14PR	8.15 x 15 x 14PR			
	Tire Size, Rear		8.25 x 15	6.5 x 10 x 12PR	6.5 x 10 x 12PR	6.5 x 10 x 12 PR			
Dimensions	Overhead Guard Height	in	100	95.4	86.2	86.2			
	Length to Face of Forks	in	144.9	102.6	105	109			
	Overall Width	in	82.2	47.2	48.4	48.4			
	Ground Clearance, Loaded, Under Mast	in	7.7	5.1	5.7	5.7			
	Turning Radius	in	132.7	92.2	95	98			
Performance	Travel Speed Unloaded	mph	14	11	11.6	11.6			
	Engine Manufacturer / Model		PSI / 4.3	Hyundai / L4KB	Hyundai / L4KB	Hyundai / L4KB			
	Engine Power	hp @ rpm	106 @ 2,300 rpm	60 @ 2,300 rpm	60 @ 2,300 rpm	60 @ 2,300 rpm			
	Engine Torque	lb-ft @ rpm	246 @ 1,400 rpm	137 @ 1,800 rpm	137 @ 1,800 rpm	137 @ 1,800 rpm			
	No. of Cylinders / Cubic Capacity	# / cc	6 / 4,294	4 / 2,359	4 / 2,359	4 / 2,359			
	Service Brake		Wet Disc	Wet Disc	Wet Disc	Wet Disc			

* In this case the Length = the dimension from the left side of the rear counterweight to the right. The Width = the dimension from the rear of the truck to the forks.



35/45/55 LC-9

LPG Forklift
8,000-12,000 lbs. capacity · Cushion Tire

		35LC-9		45LC-9		55LC-9	
Identification	Load Capacity	lb	8,000	10,000	12,000		
	Load Center	in	24	24	24		
Weights	Service Weight	lb	13,457	5,556	17,405		
	Axle-loading, Loaded Front / Rear	lb	18,488 / 2,685	22,280 / 3,197	25,785 / 3,746		
	Axle-loading, Unloaded Front / Rear	lb	5,578 / 7,879	6,501 / 9,054	6,433 / 10,972		
Wheels, Chassis	Tire Size, Front		22 x 9 x 16P	22 x 12 x 16	22 x 12 x 16		
	Tire Size, Rear		18 x 7 - 12.2	18 x 8 - 12.2	18 x 8 - 12.2		
Dimensions	Overhead Guard Height	in	86	86	86		
	Length to Face of Forks	in	99.3	109.3	111.3		
	Overall Width	in	50.0	55.9	55.9		
	Ground Clearance, Loaded, Under Mast	in	4.3	4.3	4.3		
Performance	Turning Radius	in	84.6	95.6	97		
	Travel Speed Unloaded	mph	10.3	10.3	10.3		
	Engine Manufacturer / Model		KUBOTA / WG3800	KUBOTA / WG3800	KUBOTA / WG3800		
	Engine Power	hp @ rpm	91.8 @ 2,450	91.8 @ 2,450	91.8 @ 2,450		
	Engine Torque	lb-ft @ rpm	214 @ 1,200	214 @ 1,200	214 @ 1,200		
	No. of Cylinders / Cubic Capacity	# / cc	4 / 3,769	4 / 3,769	4 / 3,769		
Service Brake		Foot / Hydraulic	Foot / Hydraulic	Foot / Hydraulic			

UNRIVALED POWER AND PERFORMANCE

Hyundai's large capacity cushion tire forklifts feature an unmatched combination of durability, power, and innovative features. The LC-9 is powered by a 3.8L Kubota engine that delivers high drawbar pull for superior traction and load control. Bigger loads mean more heat and stress on tires, so the LC-9 includes premium Continental tires crafted to handle the heat.

The LC-9 Series offers an optional boxcar special counterweight for a tighter turning radius and standard eyelets allowing the unit to be hoisted wherever needed, such as ships to unload large loads like paper rolls.

DIESEL FORKLIFTS

THAT DELIVER MORE

More power. More strength. More capability. And for 2026 more models that fully meet Tier 4 regulations. Hyundai diesel forklifts are the workhorses you need to tackle the toughest jobs. Our lineup includes models with capacities ranging from 5,000 to 55,000 lbs.

All Hyundai diesel forklifts feature powerhouse engines that deliver loads of torque with low emissions and rugged transmissions for outstanding responsiveness. Add in heavy-duty drive axles and virtually maintenance-free wet disc brakes, and you have machines that offer more than just brute strength.

Built to withstand years of punishment, Hyundai diesel forklifts also feature cabs that minimize fatigue and maximize productivity. Inside are our multifunction displays with real-time data, full suspension seats, efficient climate control systems, power steering, and ergonomically placed controls.

So, whether it's working at construction sites, ports, lumber mills, mines, or handling precast concrete, building materials or containers, nothing does the job better, quicker, or more efficiently than Hyundai diesel forklifts.



DIESEL FORKLIFTS



25/30 D-9V, 35 DN-9V

Diesel Forklifts
5,000-7,000 lbs. capacity



35/45 D, 50 DN-9VB

Diesel Forklifts
8,000-11,000 lbs. capacity

			25D-9V	30D-9V	35DN-9V	35D	45D	50DN-9VB
Identification	Load Capacity	lb	5,000	6,000	7,000	8,000	10,000	11,000
	Load Center	in	24	24	24	24	24	24
Weights	Service Weight	lb	8,583	9,484	10,267	13,022	15,236	16,054
	Axle-loading, Loaded Front / Rear	lb	12,229 / 1,867	14,019 / 2,077	15,655 / 2,328	18,166 / 2,527	21,929 / 3,227	23,688 / 3,388
	Axle-loading, Unloaded Front / Rear	lb	3,483 / 5,102	3,640 / 5,845	3,545 / 6,722	6,038 / 6,984	6,523 / 8,712	6,492 / 9,561
Wheels, Chassis	Tire Size, Front		7 x 12 x 14PR	28 x 9 -15 - 16PR	8.15 x 15 x 14PR	8.25 x 15 x 14PR	7.5 x 16 x 12PR	7.5 x 16 x 12PR
	Tire Size, Rear		6.5 x 10 x 12PR	6.5 x 10 x 12PR	6.5 x 10 x 12PR	7 x 12 x 14PR	7 x 12 x 14PR	7 x 12 x 14PR
Dimensions	Overhead Guard Height	in	84.8 (85.8 with cab)	85.8 (86.4 with cab)	85.8 (86.4 with cab)	93.3	92.91	92.91
	Length to Face of Forks	in	103.1	108.3	108.3	124.07	129.29	129.29
	Overall Width Single Drive Tire (Dual Drive Tire Option)	in	47.2 (—)	48.4 (—)	48.4 (—)	53.9 (68.7)	53.9 (68.7)	53.9 (68.7)
	Ground Clearance, Loaded, Under Mast	in	5.1	5.7	5.7	6.69	6.1	6.1
	Turning Radius	in	92.6	97.7	97.7	114	119.6	119.6
Performance	Travel Speed, Loaded / Unloaded	mph	9.8 / 10.7	10.7 / 11.4	10.2 / 11.4	17.5 / 18.9	17.2 / 18.3	17.2 / 18.3
	Engine Manufacturer / Model		HDI / DM02	HDI / DM02	HDI / DM02	HDI / DN03 Tier 4 Final	HDI / DN03 Tier 4 Final	HDI / DN03 Tier 4 Final
	Engine Power	hp @ rpm	67.7 @ 2,300	67.7 @ 2,300	67.7 @ 2,300	75.8 @ 2,300	75.8 @ 2,300	75.8 @ 2,300
	Engine Torque	lb-ft @ rpm	180.7 @ 1,600	180.7 @ 1,600	180.7 @ 1,600	243 @ 1,400	243 @ 1,400	243 @ 1,400
	No. of Cylinders / Cubic Capacity	# / cc	4 / 2,392	4 / 2,392	4 / 2,392	4 / 3,049	4 / 3,049	4 / 3,049
	Service Brake		Foot / Hydraulic	Foot / Hydraulic	Foot / Hydraulic	Foot / Hydraulic	Foot / Hydraulic	Foot / Hydraulic
	Fuel Consumption Rate / VDI	gal / hr	.71	.8	.85	1.27	1.27	1.27



35/40/45 D-9

Diesel Forklift
8,000 - 10,000 lbs. capacity



50 DA-9

Diesel Forklift
11,000 lbs. capacity

			35D-9	40D-9	45D-9	50DA-9
Identification	Load Capacity	lb	8,000	9,000	10,000	11,000
	Load Center	in	24	24	24	24
Weights	Service Weight	lb	13,082	14,295	15,212	16,131
	Axle-loading, Loaded Front / Rear	lb	17,948 / 2,851	20,078 / 3,034	21,806 / 3,327	23,541 / 3,611
	Axle-loading, Unloaded Front / Rear	lb	5,756 / 7,326	6,144 / 8,148	6,131 / 9,081	6,124 / 10,005
Wheels, Chassis	Tire Size, Front		8.25 x 15 x 14PR	7.5 x 16 x 12PR	7.5 x 16 x 12PR	7.5 x 16 x 12PR
	Tire Size, Rear		7 x 12 x 14PR	7 x 12 x 14PR	7 x 12 x 14PR	7 x 12 x 14PR
Dimensions	Overhead Guard Height	in	92.91	92.52	95.52	95.52
	Length to Face of Forks	in	127	127	129	130
	Overall Width Single Drive Tire (Dual Drive Tire Option)	in	54 (68.5)	54 (68.5)	54 (68.5)	54 (68.5)
	Ground Clearance, Loaded, Under Mast	in	6.7	6.1	6.1	6.1
	Turning Radius	in	116	116	118	118.5
Performance	Travel Speed Unloaded	mph	16.5	16	15.9	15.9
	Engine Manufacturer / Model		Cummins / QSF3.8	Cummins / QSF3.8	Cummins / QSF3.8	Cummins / QSF3.8
	Engine Power	hp @ rpm	101 @ 2,200	101 @ 2,200	101 @ 2,200	101 @ 2,200
	Engine Torque	ft-lb @ rpm	306 @ 1,600	306 @ 1,600	306 @ 1,600	306 @ 1,600
	No. of Cylinders / Cubic Capacity	# / cc	4 / 3,726	4 / 3,726	4 / 3,726	4 / 3,726
	Service Brake		Wet Disc	Wet Disc	Wet Disc	Wet Disc
	Fuel Consumption Rate	g/h	1.4	1.4	1.4	1.4



70/80 D-9V

Diesel Forklift
15,500 - 17,500 lbs. capacity

			70D-9V	80D-9V
Identification	Load Capacity	lb	15,500	17,500
	Load Center	in	24	24
Weights	Service Weight	lb	22,306	25,470
	Axle-loading, Loaded Front / Rear	lb	33,270 / 4,467	37,988 / 5,119
	Axle-loading, Unloaded Front / Rear	lb	9,685 / 12,619	11,250 / 14,220
Wheels, Chassis	Tire Size, Front		8.25 x 15 x 14PR	9 x 20 x 14PR
	Tire Size, Rear		8.25 x 15 x 14PR	9 x 20 x 14PR
Dimensions	Overhead Guard Height	in	102.2	105.5
	Length to Face of Forks	in	144.7	156.3
	Overall Width Single Drive Tire (Dual Drive Tire Option)	in	82.2	86.4
	Ground Clearance, Loaded, Under Mast	in	7.7	9.8
	Turning Radius	in	135.3	145.7
Performance	Travel Speed Unloaded	mph	21.0	21.2
	Engine Manufacturer / Model		HDI / DN03 Tier 4 Final	HDI / DN03 Tier 4 Final
	Engine Power	hp @ rpm	110 @ 2,300	110 @ 2,300
	Engine Torque	ft-lb @ rpm	306 @ 1,600	306 @ 1,600
	No. of Cylinders / Cubic Capacity	# / cc	4 / 3,409	4 / 3,409
	Service Brake		Hydraulic	Hydraulic
	Fuel Consumption Rate	g/h	1.2	1.2



100 D-9V

Diesel Forklift
22,000 lbs. capacity



110/130/160 D-9

Diesel Forklift
25,000 - 36,000 lbs. capacity

		100D-9V		110D-9	130D-9	160D-9
Identification	Load Capacity	lb	22,000	25,000	29,000	36,000
	Load Center	in	24	24	24	24
Weights	Service Weight	lb	28,823	36,048	37,459	43,746
	Axle-loading, Loaded Front / Rear	lb	45,056 / 5,814	53,447 / 6,852	59,734 / 6,552	70,568 / 8,453
	Axle-loading, Unloaded Front / Rear	lb	12,427 / 16,396	17,946 / 18,102	17,778 / 19,848	20,825 / 22,919
Wheels, Chassis	Tire Size, Front		9 x 20 x 14PR	10 x 20 x 16PR	10 x 20 x 16PR	12 x 20 x 18PR
	Tire Size, Rear		9 x 20 x 14PR	10 x 20 x 16PR	10 x 20 x 16PR	12 x 20 x 18PR
Dimensions	Overhead Guard Height	in	105.5	116	116	117.3
	Length to Face of Forks	in	167.9	179.9	180.3	200
	Overall Width Single Drive Tire (Dual Drive Tire Option)	in	89.2	96.5	96.5	98.3
	Ground Clearance, Loaded, Under Mast	in	9.8	9.8	9.8	9.8
	Turning Radius	in	156.1	171.3	171.3	192.7
Performance	Travel Speed, Unloaded	mph	20.3	22.1	21.9	21.9
	Engine Manufacturer / Model		Cummins / F3.8	Cummins / QSB6.7	Cummins / QSB6.7	Cummins / QSB6.7
	Engine Power	hp @ rpm	120.6 @ 2,200	164 @ 2,300	164 @ 2,300	164 @ 2,300
	Engine Torque	ft-lb @ rpm	371 @ 1,500	539 @ 1,500	539 @ 1,500	539 @ 1,500
	No. of Cylinders / Cubic Capacity	# / cc	4 / 3,726	6 / 6,690	6 / 6,690	6 / 6,690
	Service Brake		Wet Disc	Wet Disc	Wet Disc	Wet Disc
	Fuel Consumption Rate	g/h	1.3	3.19	3.19	3.2



160 D-9L / 180 D-9B

Diesel Forklift
36,000-40,000 lbs. capacity



250 D-9

Diesel Forklift
55,000 lbs. capacity

		160D-9L	180D-9B	250D-9
Identification	Load Capacity	lb	36,000	55,000
	Load Center	in	48	48
Weights	Service Weight	lb	52,810	85,533
	Axle-loading, Loaded Front / Rear	lb	82,559 / 5,525	128,556 / 12,092
	Axle-loading, Unloaded Front / Rear	lb	26,599 / 26,209	43,003 / 42,529
Wheels, Chassis	Tire Size, Front		12 x 20 x 20PR	14 x 24 x 32PR
	Tire Size, Rear		12 x 20 x 20PR	14 x 24 x 32PR
Dimensions	Overhead Guard Height	in	121	130
	Length to Face of Forks	in	219	250
	Overall Width Single Drive Tire (Dual Drive Tire Option)	in	100	120.9
	Ground Clearance, Loaded, Under Mast	in	9.6	11.8
	Turning Radius	in	208.8	228.6
Performance	Travel Speed Unloaded	mph	21.5	18.8
	Engine Manufacturer / Model		Cummins / QSB6.7	Cummins / QSL9
	Engine Power	hp @ rpm	164 @ 2,300	274 @ 2,200
	Engine Torque	ft-lb @ rpm	539 @ 1,500	897 @ 1,500
	No. of Cylinders / Cubic Capacity	# / cc	6 / 6,690	6 / 8,849
	Service Brake		Wet Disc	Wet Disc
	Fuel Consumption Rate	g/h	3.2	6.8

PALLET JACKS, TUGGERS, AND STACKERS THAT DELIVER MORE

More Energy Efficiency. More Features. More Convenience. Hyundai Class III forklifts are designed to increase your productivity as you store, transport, or pick items throughout your facilities.

Across our line, you'll find features like powerful, maintenance-free AC drive motors, reliable, high performance controllers, robust German-built tillers, heavy-duty construction, and easy access to key maintenance points.

Highly efficient machines, Hyundai electric pallet jacks, tuggers and stackers also include Li-ion power to bring you lower energy costs, less maintenance, opportunity charging, and extended working time.

Our line also includes advanced features like CAN-bus technology to reduce downtime; tillers, handles and controls ergonomically designed to minimize operator fatigue and maximize precise handling; and fast travel speeds to move more pallets more quickly shift after shift.



CLASS III PALLET JACKS



33/45 PPWN
Electric Pallet Jack
3,300 - 4,500 lbs. capacity



40/45 PPW
Electric Pallet Jack
4,000 - 4,500 lbs. capacity



60/80 PPR
Walkie/Rider
6,000 - 8,000 lbs. capacity

		33PPWN		45PPWN		40PPW		45PPW		60PPR		80PPR	
Identification	Load Capacity	lb	3,300	4,500	4,000	4,500	6,000	8,000					
	Load Center	in	24	24	24	24	24	48					
Weights	Service Weight	lb	278	337	913	1,177	2,330	2,465					
	Axle-loading, Loaded Front / Rear	lb	1,102 / 2,469	1,369 / 3,368	1,727 / 3,146	1,881 / 3,696	3,100 / 5,280	2,860 / 7,524					
	Axle-loading, Unloaded Front / Rear	lb	211 / 60	254 / 75	735 / 176	913 / 264	1,870 / 550	2,024 / 440					
Wheels, Chassis	Tire Type		Polyurethane	Polyurethane	Polyurethane	Polyurethane	Polyurethane	Polyurethane	Polyurethane				
Dimensions	Length to Face of Forks	in	15	15.2	23.4	23.4	43	43					
	Overall Width	in	21.3	21.3	28.7	28.7	37 / 37.8	37 / 37.8					
	Fork Length	in	45.3	45.3	48	45.3	36, 42, 48, 54, 60, 96 Standard Tip	84, 93, 96 Extended Tip					
	Turning Radius	in	52.4	52.6	60	59	84.4	104.7					
Performance	Travel Speed Loaded / Unloaded	mph	2.8 / 3.0	3.0 / 3.2	3.1 / 3.3	3.5 / 3.7	6.2 / 8.7	5.9 / 7.5					
	Drive Motor Rating	hp	0.87	1.02	1	1.7	5.1	5.1					
	Pump (Lift) Motor Rating	hp	0.67	1.08	1.1	1.1	3	3					
	Battery Voltage	v	24	48	24	24	24	24					
	Battery Type		Li-Ion Battery Pack	Li-Ion Battery Pack	AGM or Li-Ion Battery Pack	Industrial or Li-Ion Battery	Industrial or Li-Ion Battery	Industrial or Li-Ion Battery	Industrial or Li-Ion Battery				
Others	Battery Compartment (L x W x H)	in	N/A	N/A	N/A	25 x 8.5 x 26.5	32.7 x 12.9 x 23.2	32.7 x 12.9 x 23.2					
	Type of Drive Control		Brushless DC	Brushless DC	AC	AC	AC	AC					



22PSWD
Walkie Straddle Stacker
2,600 lbs. capacity



35/40 PSW
Walkie Straddle Stacker
3,500-4,000 lbs. capacity



66/110 TT
Tugger
6,600-11,000 lbs. capacity



MPW55-2748
Manual Pallet Jack
5,500 lbs. capacity

	22PSWD		35PSW	40PSW	66TT	110TT	MPW55-2748	
Identification	Load Capacity	lb	2,600	3,500	4,000	6,600	11,000	5,500
	Load Center	in	24	24	24	N/A	N/A	24
Weights	Service Weight	lb	1,421-1,675	3,263	3,439	2,094	2,294	175
	Axle-loading, Loaded Front / Rear	lb	1,639 / 2,816	1,823 / 4,967	1,966 / 5,243	N/A	N/A	N/A
	Axle-loading, Unloaded Front / Rear	lb	1,375 / 440	1,905 / 1,358	2,037 / 1,402	1,212 / 882	1,345 / 902	N/A
Wheels, Chassis	Tire Type		Polyurethane	Polyurethane	Polyurethane	Solid Rubber	Solid Rubber	Polyurethane
Dimensions	Overall Length	in	25.2	36.4	37	56.3	56.3	N/A
	Overall Width	in	31.5	32.1	32.1	31.9	31.9	20.5
	Fork Length	in	42	42	42	N/A	N/A	48
	Turning Radius	in	53	61	61	52.5	52.5	N/A
Performance	Travel Speed, Loaded / Unloaded	mph	2.6 / 2.8	3.4 / 3.7	3.4 / 3.7	3.7 / 5.6	4.3 / 7.5	N/A
	Drive Motor Rating	hp	.87	1.88	1.88	2.5	3.5	N/A
	Pump (Lift) Motor Rating	hp	2.95	4.29	4.29	N/A	N/A	N/A
	Battery Voltage	v	24	24	24	24 / 375	24 / 465	N/A
	Battery Type		Li-Ion Battery	Li-Ion Battery	Li-Ion Battery	Li-Ion Battery	Li-Ion Battery	N/A
	Battery Compartment (L x W x H)	in	13 x 6.75 x 11	29.61 x 6.77 x 25.87	29.61 x 6.77 x 25.87	30.25 x 16.5 x 26.5	32.5 x 16.5 x 26.5	N/A
Other	Type of Drive Control		DC	AC	AC	AC	AC	N/A



TO BACK UP YOUR INVESTMENT IN HYUNDAI WE'VE INVESTED MILLIONS IN PARTS INVENTORY.

We're committed to helping forklift owners maximize the productivity and profitability of their operations. That commitment begins with our innovative equipment and extends after the purchase with outstanding aftermarket service and support.

Making certain that you can obtain the replacement and maintenance parts you need when you need them is key to our long-term commitment to Hyundai owners. We've built a 160,000 sq. ft. distribution center stocked with over \$12 million in on-hand inventory and some 22,000 accessible line-item parts.

But availability is only one way we help you minimize downtime. Hyundai factory-made parts precisely match the specifications of Hyundai forklifts. They deliver consistent quality you can count on to keep your equipment and your operation up and running.

Learn more at Hyundaimaterialhandling.com



YOUR HYUNDAI DEALER. DELIVERING MORE BEFORE AND AFTER YOU BUY.

Choosing the right equipment is essential to keeping your operation running—efficiently, economically, and profitably. Your Hyundai Material Handling dealer offers you the expert advice you need to make the right equipment choice.

Hyundai forklifts are sold and supported by a comprehensive dealer network with more than 150 locations across North America. Your dealer is your reliable connection to Hyundai equipment and the vast global resources we provide.

After your purchase, you can count on your Hyundai dealer for servicing by experienced, professional technicians, fast parts delivery backed by our dedicated parts center, operator and service staff training, all the services you need to cut downtime down to a minimum.

When it comes to innovative, high-performance equipment and outstanding service support, no one delivers more than Hyundai Material Handling...and your Hyundai dealer.

A GLOBAL COMPANY FOCUSED ON THE FUTURE.

Hyundai Material Handling is a key unit of HD Hyundai Xitesolution, a global industrial enterprise committed to innovation and helping to create a more productive, sustainable, and prosperous world.

From giant, ocean going vessels, to rugged construction equipment, to the most advanced line of forklifts on the market, Hyundai's mission is to provide our customers with the cutting-edge solutions they need to meet every challenge and seize every opportunity.

In 2025, Hyundai Material Handling celebrated its 25th anniversary of serving the North American business community. While we are proud of all we have achieved, our work and our commitment to innovation and service is never ending. Through our vast dealer network, we will continue to bring our customers the vast resources of our global company.

Every day we are hard at work around the world proving that No One Delivers More than Hyundai.



NO ONE DELIVERS MORE



MONTREAL (Head office)

19151 A, Cruickshank Avenue
Baie-D'Urfé (Québec) H9X 3N9

Phone: 418 694-4223
Toll free: 1 866 421-4223
info@elevex.ca

SAGUENAY

2305, Alexis-Le-Trotteur
St. Jonquière (Québec) G7X 9H8

elevex.ca



While the information contained in this brochure is based on the latest information available at the time of printing, specifications and equipment can change. Feature comparisons are based on competitive information available at the time of printing. Although the information contained in this brochure is believed to be correct, accuracy cannot be guaranteed. Hyundai Material Handling reserves the right to change product specifications and equipment at any time, without notice, without incurring obligations. Some vehicles are shown with optional equipment. Specifications apply to U.S. vehicles only. Please contact your Hyundai dealer or visit hyundaimaterialhandling.com for current vehicle specifications or details on any of the programs or services listed here.