

80D-9



Some of the photos may include optional equipment.

NO ONE DELIVERS MORE

HYUNDAI
MATERIAL HANDLING

E **ELEVEX™**
Material Handling Solutions

Your satisfaction is our priority.

Proven Performance. Innovative Design. Hyundai 9 Series Diesel Mid-Size Forklift.

The Hyundai 9 Series diesel forklifts deliver comfortable operation,
increased productivity, and ease of maintenance.

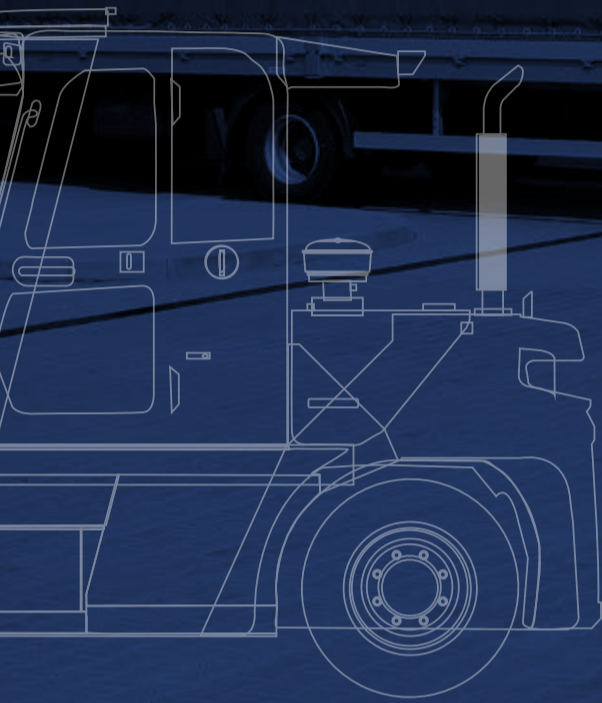
- Powerful Performance
- Spacious Operator's Compartment
- Heated Grammer™ Suspension Seat
- Electric Parking Brake
 - Parking brake operates automatically when the operator leaves the seat.
- 4.3 inch LCD Color Monitor
- Machine Inclination Warning System
- Speed Limit Settings
- Operator Presence Sensing System (OPSS)
- Full Automatic Temperature Control (FATC)
Heat and A/C



Power & Performance

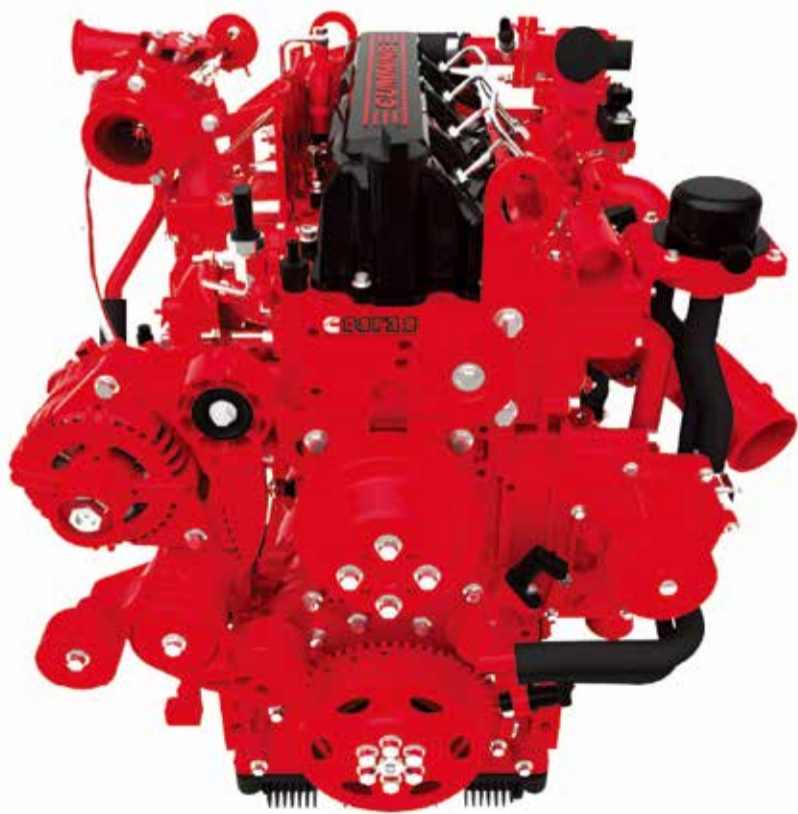
Highly Efficient, Optimized Performance

A powerful engine and advanced technology systems provide you with enhanced performance and increased productivity.



Powerful and economical Cummins QSF3.8 engine!

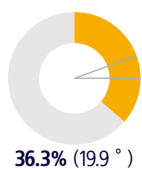
The adoption of a 4-cylinder Turbo Charger Cummins QSF3.8 engine ensures low vibration and improves cold weather performance. The combination of a direct injection fuel system, variable geometry turbo, and a cooled EGR system provides increased fuel economy and performance. Diesel Oxidation Catalyst (DOC) and Selective Catalytic Reduction (SCR) emission systems have been installed to meet Tier 4 emission standards without the use of a Diesel particulate Filter. (Requires diesel exhaust fluid.)



100.6 hp / 2,200 rpm
306 ft-lb / 1,600 rpm

Excellent gradeability and travel speed

The powerful engine provides greater acceleration, better gradability and faster travel speed on tough terrains or slopes.



Max. Gradeability (Loaded)



Max. Travel Speed (Unloaded)



ZF Fully-Automatic Transmission

Optimized engine and transmission performance provide increased acceleration performance in low rpm ranges, while also reducing noise and heat. Additionally, the TCU constantly monitors the status of the transmission and sends any diagnostic fault codes to the cluster for quick and easy access.



Drive Axle & Wet Disc Brakes

Incorporating a heavy-duty, planetary final reduction type DIC drive axle independent of the transmission ensures low vibration and ease of maintenance. Wet disc type brakes with a high flow brake oil cooler provide consistent braking and a virtually maintenance-free brake system.



Fully Hydraulic Power Steering

The hydraulic steering system guarantees smooth and flexible steering, preventing over-run and kick-back.



Mast Tilting Angle

With a mast tilting angle of 15 degrees forward and 10 degrees backward the operator has the ability to load and unload a wide range of products safely and rapidly.

Prompt and Safe Loading/Unloading

The 68.6 cc, large capacity, tandem-type hydraulic pump, powerful engine torque of 306 ft.-lb, and optimized weight distribution on the front and rear wheel axles, provide prompt, safe, and efficient loading/unloading

Extraordinary Convenience, Optimized Ergonomics

The ergonomically designed cabin provides full support and comfort to the operator.



Some of the photos may include optional equipment.

Ergonomic Operator's Cabin

The roomy, ergonomic cabin was designed to increase productivity, field of view, and operator comfort. The smooth lever and pedal operation, telescopic tilt steering column, suspension seat, and deluxe cabin provide comfortable and efficient operation.



Some of the photos may include optional equipment.



Grammer™ Seat (OPT)

The ergonomically designed, easily adjustable suspension seat, reduces operator fatigue and provides greater comfort.

- Operator's weight range (99~375 lbs)
- ELR (Emergency Locking Retractor) type seat belt is standard
- Heated seat and headrest (OPT)



Information-rich Cluster with Real-time Data

- Odometer
- Engine Rpm
- Mast Tilt Indicator
- Fuel Gauge
- High Beam Indicator Lamp
- Transmission Oil Temperature Gauge
- Fuel Heater Operation Lamp
- Air Cleaner Filter Warning Light
- Hour Meter
- Diesel Exhaust Fluid Level Warning Light
- T/M Information Display
- Parking Brake Warning Lamp
- Battery Charging Warning Light
- Consumable Replacement Display Lamp
- Engine Warm-Up Display Lamp
- Load Weight Indicator (OPT)
- Grade And Slope Display
- Engine Coolant Temperature Gauge
- Engine Check Warning Light
- Seat Belt Warning Lamp
- OPSS Lamp
- Inching Display Lamp



High-Output Air Conditioner & Heater

The air-conditioner automatically adjusts and maintains the cabin to the selected temperature and provides a more comfortable working environment for the operator.



Centralized Instrument Panel

Various switches can be concentrated on the right side of the driver's seat to quickly optimize the vehicle condition to suit the working environment.



Quick Response Control Levers

Responsive levers with an advanced hydraulic system allow precise handling and excellence performance. Comes with a standard 5-lever6-function system or an optional 7-function system.



Accelerator and Inching Pedals

The thick, high-quality floor mat and ergonomically placed control pedals reduce operator fatigue and drastically improve productivity.



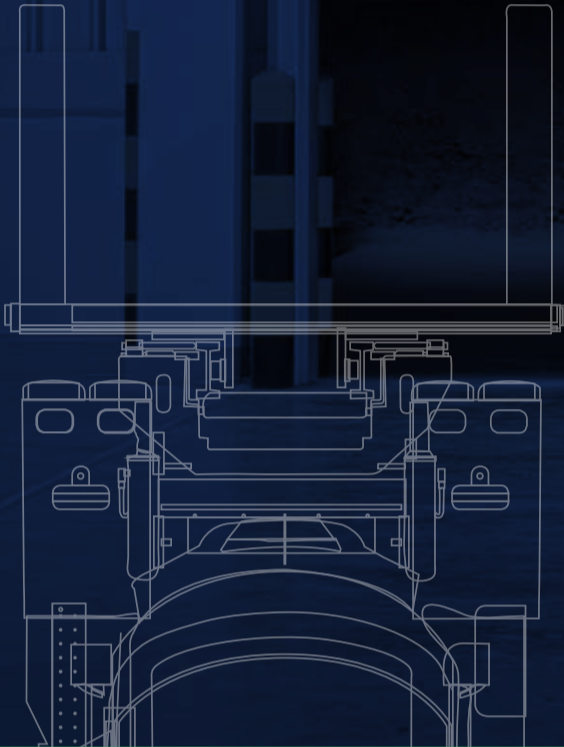
Adjustable Steering Wheel

The telescoping steering wheel is fully adjustable to adapt to the operator reducing fatigue while increasing comfort, control, and productivity.

Safe & Secure

Excellent visibility, Advanced safety

The operator's cabin was designed with careful consideration of visibility, safety, comfort, and productivity.



EXCELLENT VISIBILITY

Some of the photos may include optional equipment.

Excellent Visibility for Safe Operation

Optimized lift cylinder arrangement provides the operator with wider visibility. A standard rearview camera and monitor, along with a panoramic mirror, expand the operator's rear view.



Some of the photos may include optional equipment.



Rearview Camera (OPT)

The reverse actuated rearview camera and monitor add visibility, providing for a safer work environment.



Large Step Plates & Grab Handles

Wide, long Step Plates and ample grab handles offer three points of contact for easy and safe entry and exit of the operator's cabin.

Speed Limit Setting

Adjustable max travel speeds from 6 mph (10 km/h) to 22 mph (35 km/h) provide the ability to match the 80D-9's travel speeds to the present work conditions.

Password Setting Function

The password function on the cluster can store up to ten passwords, preventing unauthorized personnel from starting and operating the forklift, reducing the risk of accidents, damage, and theft of the forklift.

Load Weight Indicator (OPT)

The optional load indicator displays load weight and prompts a warning on the cluster when exceeding max capacity to remind the operator of safe operational limits. (Not for legal trade)

Rear Tire Cover (STD) / Under Cover (OPT)

The Rear Tire Cover helps prevent foreign materials from entering the engine compartment through the steer axle wheel wells. The Under Cover protects components in the engine compartment from excessive dust and debris entering from underneath the forklift.

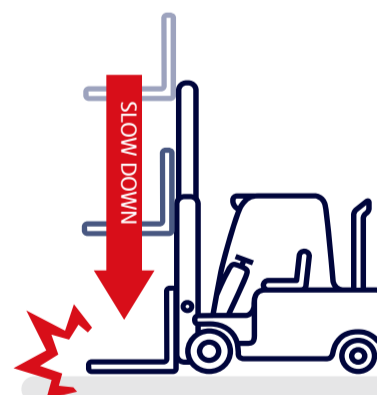


Machine Inclination Warning System

Grade and slope sensors built into the MCU provide grade and slope information independently on the cluster. Should the maximum safe operating parameters be exceeded, a warning is emitted to alert the operator.

Safety Features

A standard rearview camera, highly sensitive sensors, and an advanced safety system assure safe operation in the most demanding of work environments.



Fork Safety Features

In the case of sudden damage to a hydraulic line, the down-safety valve prevents the load from falling, while a down-control valve maintains a controlled descent speed.



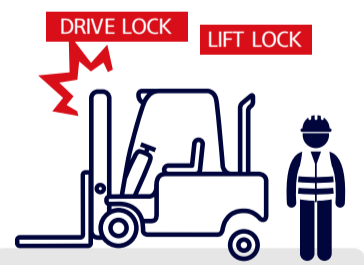
High Intensity LED Headlamps & LED taillights

High intensity LED headlamps and semi-permanent taillight assemblies improve work efficiency and safety.



Auto Parking Brake

If the operator leaves the seat while the gear selector is in neutral, the parking brake is automatically engaged to secure the forklift from unintended travel, and released upon the operator's return to the seat.



Operator Presence Sensing System

The Operator Presence Sensing System (OPSS) renders all mast and drive functions inoperable when the operator isn't in the seat.

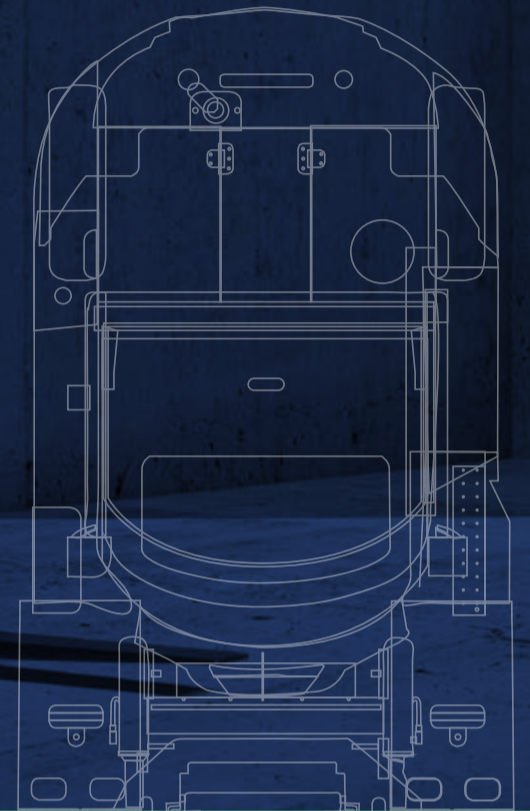


Vibration Absorbing Bellows

The durability of the muffler and the exhaust pipe is improved by the use of vibration absorbing bellows in the exhaust pipe connecting the engine exhaust manifold and the muffler.

Cutting Servicing Downtime

An ideal arrangement of components ensures easy access and convenience for maintenance.



Some of the photos may include optional equipment.

Fully Opening Tilt Cabin and Hood

The cab tilt system has an electrically assisted hydraulically actuated cylinder that tilts the cab creating unparalleled access.



Some of the photos may include optional equipment.

80D-9 SERVICING ADVANTAGES

You'll find convenient maintenance features throughout the 80D-9.



Engine Fault Diagnosis

Details of engine fault codes diagnosed by the engine control unit (ECU) can be viewed via the cluster.



Maintenance Management

The replacement schedule of consumable items can be tracked via the cluster, preventing performance issues or damage due to a lack of maintenance.



Fuse Box and Relay Box

The cabin is fitted with an easily accessible fuse and relay box with a waterproof and dustproof cover for ease of maintenance.



Easy Battery Check

Batteries are installed under the left-side step of the forklift to ensure convenient and easy access.



Cabin Tilting switch

The cabin can be tilted up to 42.5 degrees with a single switch, making it easy to service the components located under the operator's cabin.



Lockable Fuel Cap (OPT)

A locking fuel cap has been installed to prevent theft of fuel or equipment malfunction due to foreign materials.



Easy-to-Access Washer Tank

Washer fluid can be checked and topped off by simply opening the winged engine cover.



Easy-to-Fill Diesel Exhaust Fluid

Diesel Exhaust Fluid inlet can be easily accessed for convenient refills.



Improved Serviceability

Adoption of one-touch latches make for easy access to service the driveline components and electric parts.

Hi-MATE, a solution for field control based on data

Continuous monitoring of the data collected from sensors and modules installed on the forklift during daily use are provided to the mobile device or computer of the customer or designated dealer in real time through Hyundai Construction Equipment's server. Such data can be used for establishing a control plan for safety in the field, productivity improvement, service intervals, and cost savings. Allowing your business to operate smarter and achieve your goals.



Equipment operation management

* Real-time monitoring and follow-up management of individual vehicles, drivers, equipment on-site, and operation information

- Key-on time, travel hours, work hours, and traveling position



Equipment status management

* Supplying vital self-diagnostics information about forklift linked with operation hours, helping to establish a service management plan

- Indicating fuel remainder, failure information
- Indicating consumable exchange timing and service intervals



Safe traveling control

* Provides alerts allowing for accountability and follow-up management of safety incidents caused by collisions involving the forklift during operation

- Records number and severity of impacts

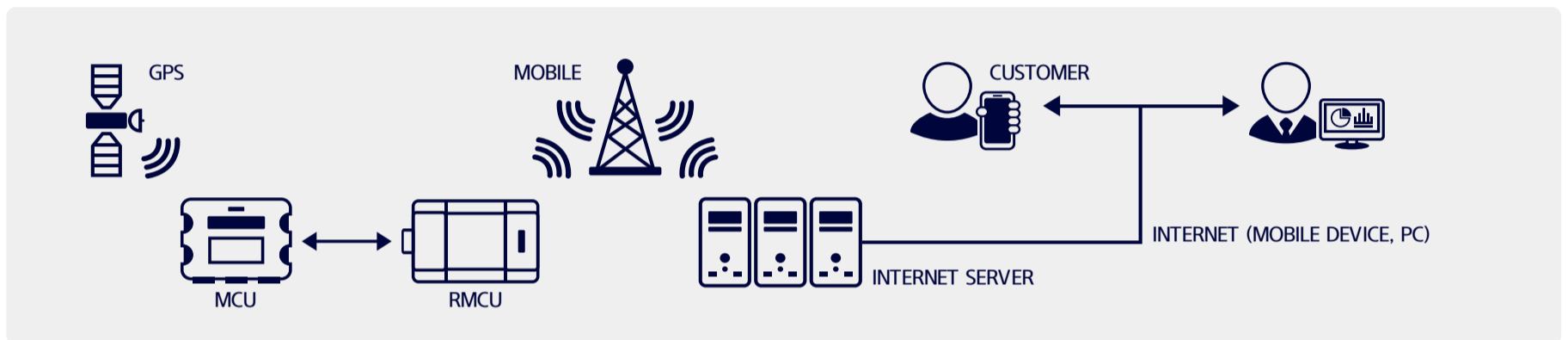


Human resource management

* Checking and follow-up management such as matching between self-diagnostics and equipment conditions before operation

- Driver authorization, self-diagnostics of equipment conditions

Data Flow



New 9 Series Mast Specification

80D-9 Shaft Type Fork & Carriage

| Mast Type | Maximum Fork Lift Height | Overall Height (Fork Lowered) | Maximum height | Free lift height (with backrest) | Tilt Angle | | Load Capacity (24in LC) | Truck Weight | |
|---------------------------|--------------------------|-------------------------------|----------------|----------------------------------|------------|-----|-------------------------|--------------|--------|
| | | | | | Fwd | Bwd | | | |
| | in | in | in | in | deg | deg | lbs | lbs | |
| 2-Stage Limited free lift | V270 | 107.9 | 99.4 | 160.4 | 5.9 | 15 | 10 | 17,500 | 25,691 |
| | ※V300 | 119.7 | 105.3 | 172.2 | 5.9 | 15 | 10 | 17,500 | 25,797 |
| | V330 | 131.5 | 111.2 | 184.1 | 5.9 | 15 | 10 | 17,500 | 25,907 |
| | V350 | 139.4 | 115.2 | 191.9 | 5.9 | 15 | 10 | 17,500 | 25,978 |
| | V370 | 147.2 | 119.1 | 199.8 | 5.9 | 15 | 10 | 17,500 | 26,051 |
| | V400 | 159.1 | 125.0 | 211.6 | 5.9 | 15 | 10 | 17,500 | 26,157 |
| | V450 | 178.7 | 136.8 | 231.3 | 5.9 | 15 | 10 | 17,500 | 26,624 |
| | V500 | 198.4 | 146.7 | 251.0 | 5.9 | 15 | 10 | 17,500 | 26,805 |
| | V550 | 218.1 | 156.5 | 270.7 | 5.9 | 15 | 10 | 17,500 | 27,133 |
| | V600 | 237.8 | 166.3 | 290.4 | 5.9 | 15 | 10 | 17,420 | 27,166 |
| | V700 | 277.2 | 186.0 | 329.7 | 5.9 | 15 | 10 | 16,538 | 27,607 |
| V750 | 296.9 | 195.9 | 349.4 | 5.9 | 15 | 6 | 16,097 | 27,793 | |
| 3-Stage full freelif | TF/TS450 | 179.9 | 108.3 | 232.5 | 55.7 | 15 | 6 | 17,500 | 27,261 |
| | TF/TS500 | 199.6 | 116.1 | 252.2 | 63.8 | 15 | 10 | 17,500 | 27,488 |
| | TF/TS550 | 219.3 | 124.0 | 271.9 | 71.5 | 15 | 10 | 17,500 | 27,716 |
| | TF/TS600 | 239.0 | 131.9 | 291.5 | 79.3 | 15 | 10 | 17,200 | 27,940 |

※ : Standard

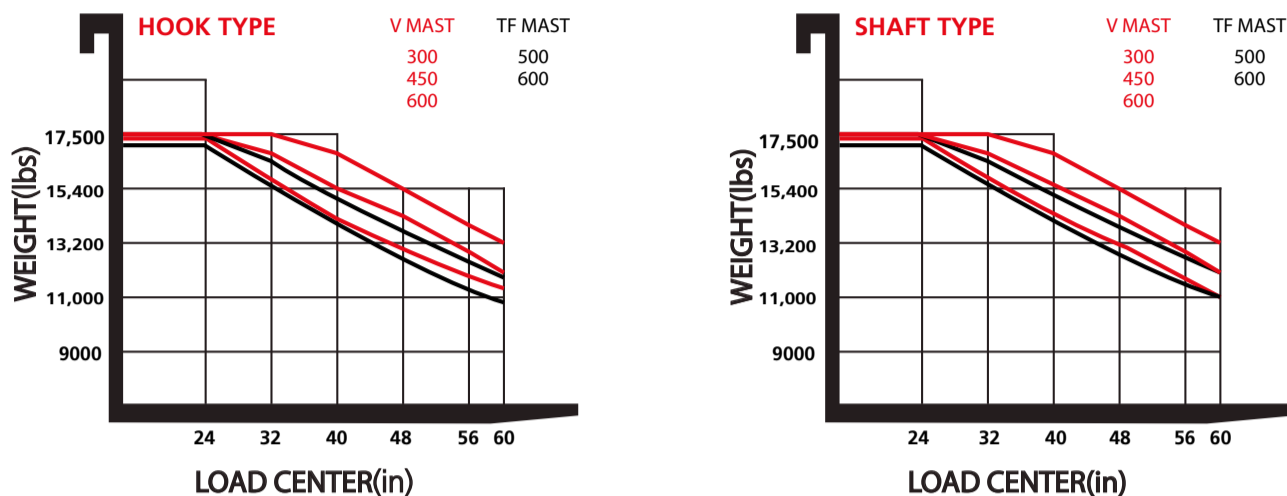
80D-9 Hook Type Fork & Carriage

| Mast Type | Maximum Fork Lift Height | Overall Height (Fork Lowered) | Maximum height | | Free lift height | | Tilt Angle | | Load Capacity (24in LC) | Truck Weight | |
|---------------------------|--------------------------|-------------------------------|----------------|---------------|------------------|---------------|------------|-----|-------------------------|--------------|--------|
| | | | w/o backrest | with backrest | w/o backrest | with backrest | Fwd | Bwd | | | |
| | in | in | in | in | in | in | deg | deg | lbs | kg | |
| 2-Stage Limited free lift | V270 | 107.9 | 99.4 | 159.3 | 159.4 | 5.9 | 5.9 | 15 | 10 | 17,500 | 25,724 |
| | ※V300 | 119.7 | 105.3 | 171.2 | 171.3 | 5.9 | 5.9 | 15 | 10 | 17,500 | 25,830 |
| | V330 | 131.5 | 111.2 | 183.0 | 183.1 | 5.9 | 5.9 | 15 | 10 | 17,500 | 25,943 |
| | V350 | 139.4 | 115.2 | 190.9 | 191.0 | 5.9 | 5.9 | 15 | 10 | 17,500 | 26,011 |
| | V370 | 147.2 | 119.1 | 198.7 | 198.8 | 5.9 | 5.9 | 15 | 10 | 17,500 | 26,084 |
| | V400 | 159.1 | 125.0 | 210.6 | 210.7 | 5.9 | 5.9 | 15 | 10 | 17,500 | 26,190 |
| | V450 | 178.7 | 136.8 | 230.2 | 230.3 | 5.9 | 5.9 | 15 | 10 | 17,500 | 26,657 |
| | V500 | 198.4 | 146.7 | 249.9 | 250.0 | 5.9 | 5.9 | 15 | 10 | 17,500 | 26,838 |
| | V550 | 218.1 | 156.5 | 269.6 | 269.7 | 5.9 | 5.9 | 15 | 10 | 17,500 | 27,166 |
| | V600 | 237.8 | 166.3 | 289.3 | 289.4 | 5.9 | 5.9 | 15 | 10 | 17,420 | 27,200 |
| | V700 | 277.2 | 186.0 | 328.7 | 328.8 | 5.9 | 5.9 | 15 | 10 | 16,538 | 27,641 |
| V750 | 296.9 | 195.9 | 348.3 | 348.4 | 5.9 | 5.9 | 15 | 6 | 16,097 | 27,826 | |
| 3-Stage full freelif | TF/TS450 | 179.9 | 108.3 | 232.4 | 231.5 | 55.8 | 56.7 | 15 | 6 | 17,500 | 27,294 |
| | TF/TS500 | 199.6 | 116.1 | 252.0 | 251.2 | 63.7 | 64.6 | 15 | 10 | 17,500 | 27,521 |
| | TF/TS550 | 219.3 | 124.0 | 271.7 | 270.9 | 71.6 | 72.4 | 15 | 10 | 17,500 | 27,749 |
| | TF/TS600 | 239.0 | 131.9 | 291.4 | 290.6 | 79.4 | 80.3 | 15 | 10 | 17,200 | 27,974 |

※ : Standard

Load Capacity

80D-9



Optional Items

- Fork (in)
80D-9 : 47.2(STD), 53.2, 59.1, 70.9, 78.8, 84.7, 86.6, 94.5
- TIRE : Solid / Non-marking
- M.C.V : 2/3/4/5 spool (4 spool: standard)
- Rear view camera
- One-piece side shift carriage,
one-piece side shift + fork positioner carriage
- 80D-9 hook-type carriage, one-piece shaft-type carriage
- Seat : Grammer heated wire + headrest seat
- OHG (A/C, Heater)
- Master switch
- Undercover
- LED warning light (Amber)
- TOP WIPER

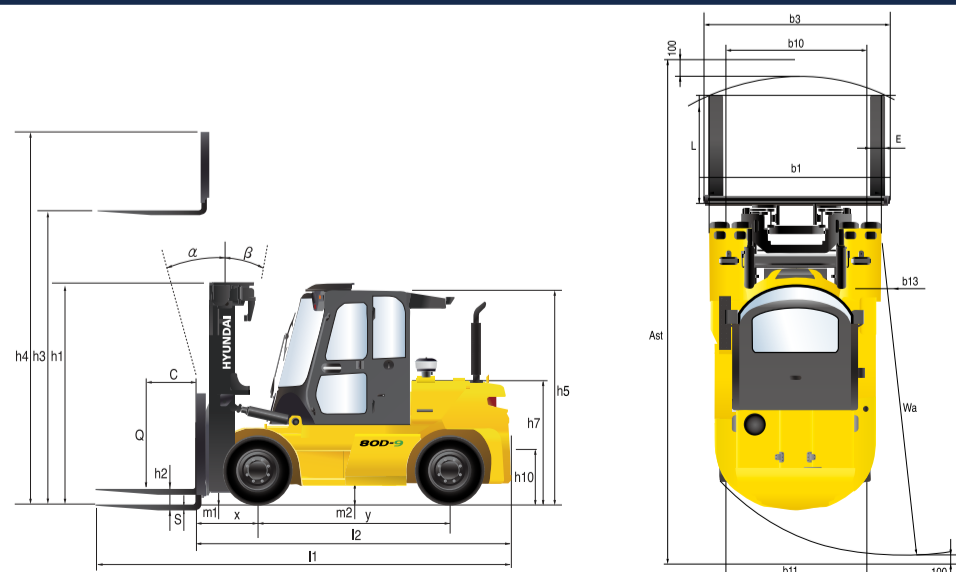
* All specifications and photos in this catalog are subject to change for quality improvement.

Specification

| Distinguishing mark | | |
|---------------------|--|--|
| 1.1 | Manufacturer | Hyundai |
| 1.2 | Manufacturer's type designation | 80D-9 |
| 1.3 | Drive | Diesel |
| 1.4 | Type of operation | Seat type |
| 1.5 | Load capacity | lbs (kg) 17,500 (8,000) |
| 1.6 | Load center distance | c in (mm) 24 (600) |
| 1.8 | Load center distance | x in (mm) 27 (690) |
| 1.9 | Wheelbase | y in (mm) 98.4 (2,500) |
| Weight | | |
| 2.1 | Service weight | lbs (kg) 25,794 (11,700) |
| 2.2 | Axle loading, loaded front/rear | lbs (kg) 38,047 (17,258) / 5383 (2,442) |
| 2.3 | Axle loading, unloaded front/rear | lbs (kg) 11,309 (5,130) / 14,484 (6,570) |
| Tires, chassis | | |
| 3.1 | Tires : Pneumatic (P), Solid rubber (V), Non marking (N) | P |
| 3.2 | Tire size, front (Ø x width) | 9.00-20-14PR |
| 3.3 | Tire size, rear (Ø x width) | 9.00-20-14PR |
| 3.5 | Wheels, number front / rear (x = drive wheels) | 4 x 2 |
| 3.6 | Tread, front | in (mm) 64.3 (1,632) |
| 3.7 | Tread, rear | in (mm) 67 (1,700) |
| Dimensions | | |
| 4.1 | Tilt angle (forward / backward) | deg 15 / 10 |
| 4.2 | Height, mast lowered | h1 in (mm) 105.3 (2,675) |
| 4.3 | Free lift | h2 in (mm) 5.7 (145) |
| 4.4 | Lift height | h3 in (mm) 119.7 (3,040) |
| 4.5 | Height, mast extended | h4 in (mm) 172.3 (4,375) |
| 4.7 | Height of head guard (cabin) | h5 in (mm) 104.3 (2,649) |
| 4.8 | Seat height | h7 in (mm) 65 (1,650) |
| 4.12 | Coupling height | h10 in (mm) 20 (508) |
| 4.19 | Overall length | l1 in (mm) 203.6 (5,171) |
| 4.20 | Length to face of forks | l2 in (mm) 156.3 (3,971) |
| 4.21 | Overall width | b1 in (mm) 89.3 (2,268) |
| 4.22 | Fork dimensions (l x e x s) | 47.2 x 7.1 x 2.76 (1,200 x 180 x 70) |
| 4.23 | Fork carriage iso 2328 | Class IV |
| 4.24 | Fork-carriage width | b3 in (mm) 89.7 (2,277) |
| 4.31 | Ground clearance, below mast, | m1 in (mm) 9.9 (250) |
| 4.32 | Ground clearance, center of vehicle | m2 in (mm) 11.9 (302) |
| 4.33 | Cross-passage width (pallet 1000x1200) | Ast in (mm) 220.1 (5,590) |
| 4.34 | Aisle width of pallets 800 x 1200 crossways (w x l) | A st in (mm) 228 (5,790) |
| 4.35 | Turning radius | Wa in (mm) 145.7 (3,700) |
| 4.36 | Smallest pivot point distance | b10 in (mm) 53.3 (1,354) |

| Performance data | | | |
|------------------|---|-------------------|-------------------------|
| 5.1 | Travel speed, unloaded | mph (km/h) | 22 (35) |
| 5.2 | Fork lift speed, loaded / unloaded | in/s (mm/s) | 15.4 / 17.7 (390 / 450) |
| 5.3 | Fork descending speed, loaded / unloaded | in/s (mm/s) | 19.7 / 19.7 (500 / 500) |
| 5.5 | Max. drawbar pull, loaded | lbf (kgf) | 15,955 (7,237) |
| 5.7 | Gradeability, loaded | % | 36.3 |
| 5.10 | Service brake | | Hydraulic |
| Engine | | | |
| 7.1 | Manufacturer/model name | | CUMMINS / QSF3.8 |
| 7.2 | Rated power | hp (ps) / rpm | 100.6 (102) / 2,200 |
| 7.3 | Max. torque | lbf (kgf.m) / rpm | 306 (42.3) / 1,600 |
| 7.4 | Number of cylinders / displacement | EA / cc | 4 / 3,726 |
| 7.5 | Fuel tank capacity | gal (ℓ) | 45.2 (171.5) |
| Additional data | | | |
| 8.2 | Max. hydraulic pressure (system / attachment) | bar | 210 / 150 |
| 8.3 | Attachment oil flow rate | gal (ℓ) | 30 (115) |

Dimension



* All specifications in this catalog are subject to change according to the optional items.



MONTREAL (Head office)
19151 A, Cruickshank Avenue
Baie-D'Urfé (Québec) H9X 3N9
Phone: 418 694-4223
Toll free: 1 866 421-4223
info@elevex.ca

SAGUENAY
2305, Alexis-Le-Trotteur
St. Jonquière (Québec) G7X 9H8

elevex.ca



**NO ONE
DELIVERS MORE**

