


PSE06N-CB

Counterbalanced Stacker

1100lbs. Capacity

LITHIUM

-  **Lithium battery**
-  **Compact size**
-  **Low service weight**
-  **Efficient operation**
-  **Easy maintenance**
-  **High cost effective**
-  **Low noise**





HIGHLIGHTS

- ▶ American Curtis Travel Controller with CAN-bus control
- ▶ 24V DC permanent magnetic drive motor
- ▶ Lithium battery: 24V/60Ah
- ▶ Built-in charger: 24V/25A 110V
- ▶ Fast charging 2.5 hours
- ▶ Centered drive motor for excellent stability and traction
- ▶ Operator protection plexiglass
- ▶ Smart handle with keyless pin-code panel, RFID card and LCD display with battery indicator and hour meter
- ▶ Pinwheel turning - drive with tiller in vertical position
- ▶ Ergonomic control handle with horn and emergency belly button
- ▶ Dual butterfly-style thumb controls for traveling
- ▶ Electric lifting and lowering buttons
- ▶ Travel speed: 2.9mph (unloaded), 2.8mph (loaded)
- ▶ Speed reduction in turns

PSE06N-CB

1,100 lbs. Capacity
Counterbalanced Stacker

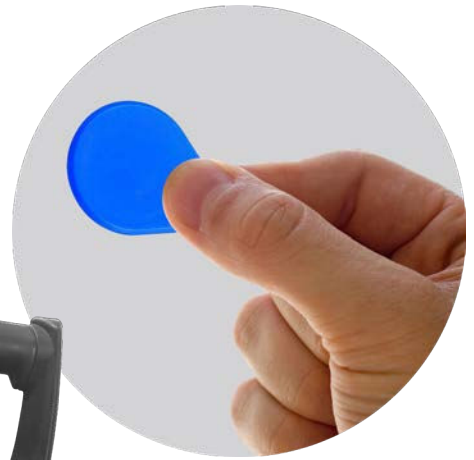
The **PSE06N-CB** Lithium Counterbalanced Stackers have a compact design, a small turning radius and a low service weight. They are designed to work in confined spaces and are ideal for mezzanine applications. They offer strong gradeability, fast speed and their increased ground clearance allows them to work in rough floor conditions. The forks can be adjusted and can adapt to most pallets. Increase your work productivity with these highly maneuverable, very low maintenance counterbalanced stackers.

COMPACT MINI-COUNTERBALANCE STACKER



ERGONOMIC. SAFE. CONVENIENT.

Tiller and Smart Handle – The long ergonomic tiller is easier to steer and it allows operator to work at a safer distance. A multi-function Smart handle with a Curtis controller and CAN-bus technology delivers reliability and superior functionality.



Turtle Speed button

Smart Pin Code



Battery discharge indicator
Operating hour counter
On-board diagnostics via error



BACK

RFDI card provides faster access to equipment and is ideal for applications where one truck is used by multiple operators.



FRONT

Emergency reverse and horn buttons

Dual butterfly-style thumb driving controls

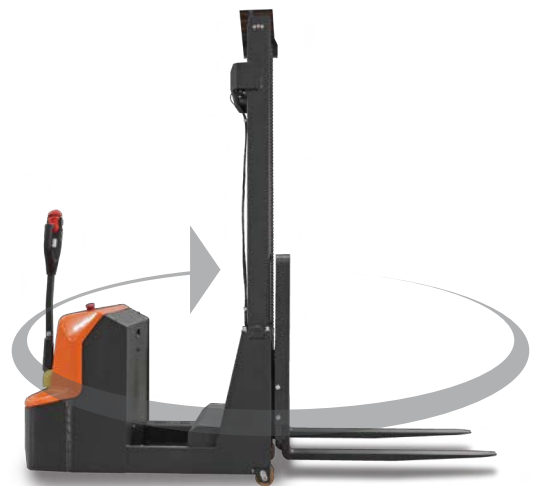
Electric lifting and lowering



Travel speed: 2.9mph unloaded, 2.8 loaded



Automatic deceleration while turning, improves safety and stability while preventing product damage.



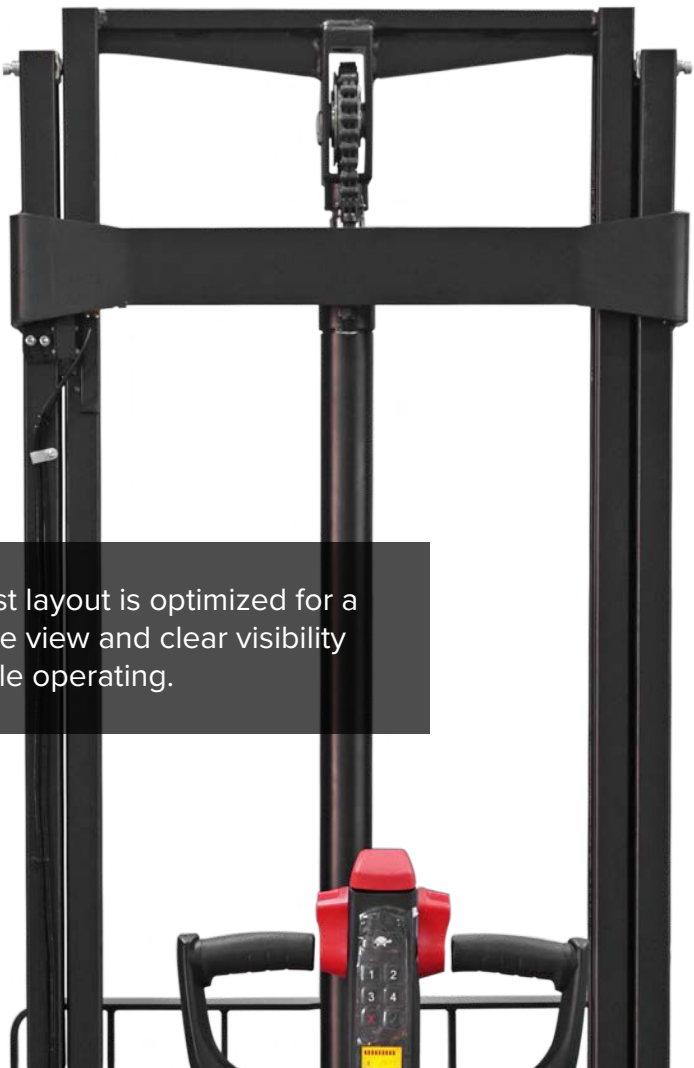
Pinwheel turning allows for tight turns. The stacker can be driven with the tiller in the vertical position.

HIGH EFFICIENCY AND GREAT VISIBILITY



Built-in charger, emergency stop button, and USB connector for charging and powering of additional devices during operations.

The PSE06N-CB Lithium Counterbalanced Stacker can easily fit into a cargo lift.



Mast layout is optimized for a wide view and clear visibility while operating.

CAN-bus



CURTIS

Easily check condition and troubleshoot with Curtis controller and CAN-bus technology.

LONG LASTING AND SAFE LITHIUM-IRON POWER

NOBLELIFT uses Lithium-Iron Phosphate batteries, the longest lasting and safest lithium battery available. Our lithium-iron batteries are equipped with a Battery Management System (BMS), thermal management system, and an automotive-grade DC high-voltage control system. BMS manages charging and discharging data to ensure safety throughout its life cycle.



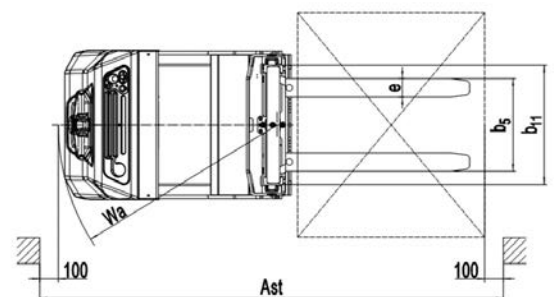
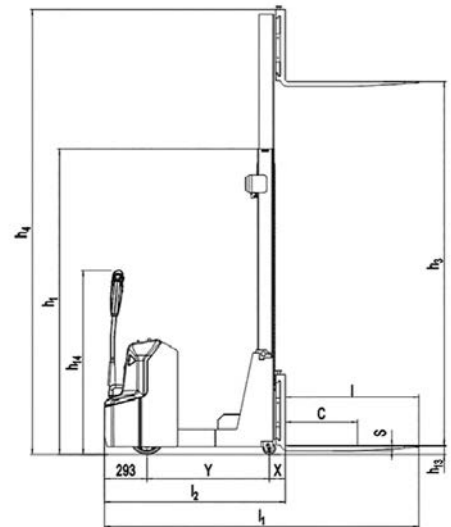
PSE06N-CB-62 Series Stackers have a 3 year or 6,000 hours warranty on the lithium-Iron battery.

ADVANTAGES OF LITHIUM POWER

LITHIUM BATTERY ADVANTAGES

Lead-Acid Battery		Lithium Battery
Lower fleet availability - Work is interrupted because battery needs to be fully charged before next use	Productivity - Memory Effect 	100% Fleet availability - Opportunity charging allows battery to be charged in between use
Periodic battery replacement	Service Life 	Batteries last 3 times longer and do not need to be replaced
Outsourced or in-house maintenance personnel required	Ongoing Maintenance 	No maintenance cost
8-10 Hours - 2 or more batteries per lift truck	Charge Duration 	2.5 Hours - 1 Battery per lift truck
Build an expensive battery room with ventilation	Battery Room 	No battery room needed
Releases hydrogen while charging - Can result in explosion - Acid burns can happen during maintenance	Dangerous Substances 	No dangerous substances
Power loss	Power Savings 	No power loss - Reduces energy consumption by 35%

Fast-charging maintenance-free Lithium battery is fully charged in 2.5 hours. Battery can be opportunity charged during user breaks and during shift changes which allows the truck to run continuously through multi-shift operations. No battery changes are necessary.



PSE06N-CB Counterbalanced Stacker					
Designation	Lowered mast height h1 (in)	Free lift height h2 (in)	Lift height h3 (in)	Extended mast height h4 (in)	Lift + fork height h3+h13 (in)
Single-stage mast	77.2	59.25	59.3	81.3	61.8
Two-stage mast	71.7	-	99.8	121.85	102.4
	77.2	-	111.6	133.66	114.2
	83.1	-	123.4	145.47	126

Identification						
1.2	Model		PSE06N-CB-62	PSE06N-CB-102	PSE06N-CB-114	PSE06N-CB-126
1.3	Drive (electric – battery or mains, diesel, petrol, fuel gas, manual)		Lithium			
1.4	Type of operation (hand, pedestrian, standing, seated, order picker)		Pedestrian			
1.5	Load capacity / rated load	Q (lb)	1,100			
1.6	Load center distance	c (in)	19.7			
1.8	Load distance, center of drive axle to fork	x (in)	4.3			
1.9	Wheel base	y (in)	33.3			
Weights						
2.1	Service weight	lb	2,497	2,541	2,585	2,629
2.3	Axle loading, laden front / rear	lb	660 / 3,250			
2.4	Axle loading, unladen front / rear	lb	1,631 / 959			
Wheels, Chassis						
3.1	Tires (solid rubber, superelastic, pneumatic, polyurethane)		Polyurethane (PU)			
3.2	Tire size, front	Øxw (in)	Ø 9.1 x 3			
3.3	Tire size, rear	Øxw (in)	Ø 3.3 x 2.8			
3.4	Additional wheels (dimensions)	Øxw (in)	/			
3.5	Wheels, number front / rear (x = driven wheels)		1x/4			
3.6	Tread, front	b ₁₀ (in)	/			
3.7	Tread, rear	b ₁₁ (in)	23.7			
Basic Dimensions						
4.2	Lowered mast height	h ₁ (in)	77.2	71.7	77.2	83.1
4.4	Lift	h ₃ (in)	59.3	99.8	111.6	123.4
4.5	Extended mast height	h ₄ (in)	81.3	121.85	133.66	145.47
4.9	Height of tiller in drive position min./max.	h ₁₄ (in)	29.5 / 45.87			
4.15	Height, lowered	h ₁₃ (in)	2.56			
4.19	Overall length	(in)	49			
4.20	Length to face of forks	(in)	49			
4.21	Overall width	b ₁ (in)	31.57			
4.22	Fork dimensions	s/e/l (in)	1.38 / 3.94 / 42			
4.25	Width over forks	b ₅ (in)	9.92 - 27.56			
4.32	Ground clearance, center of wheelbase	m ₂ (in)	2.17			
4.33	Right Angle Stack with 40x48 pallet	Ast (in)	103.54			
4.35	Turning radius	Wa (in)	46.26			
Performance Data						
5.1	Travel speed, laden / unladen	mph	2.8 / 2.9			
5.2	Lift speed, laden / unladen	ft/s	0.36 / 0.46			
5.3	Lowering speed, laden / unladen	ft/s	0.46 / 0.43			
5.8	Max. gradeability, laden / unladen	%	5 / 8			
5.10	Service brake		Electromagnetic			
E-Motor						
6.1	Drive motor rating S2 60 min	HP	1			
6.2	Lift motor rating at S3 10%	HP	3			
6.3	Battery acc. to DIN 43531 /35 / 36 A, B, C, no		/			
6.4	Battery voltage, nominal capacity K5	V/Ah	24V/60Ah			
6.5	Battery weight	lb	37.4			
6.6	Energy consumption acc. to VDI cycle	HP*h	0.6			
Others						
8.1	Type of drive control		DC			
8.4	Sound level at driver's ear - acc. to EN 12053	dB(A)	<70			



MONTREAL (Head office)
 19151 A, Cruickshank Avenue
 Baie-D'Urfé (Québec) H9X 3N9
 Phone: 418 694-4223
 Toll free: 1 866 421-4223
info@elevex.ca
elevex.ca

QUEBEC
 1279, Paul-Émile Giroux St. Suite 200
 Québec (Québec) G1C 0K9

SAGUENAY
 2305, Alexis-Le-Trotteur St.
 Jonquière (Québec) G7X 9H8

