

LOADED CONTAINER HANDLER

SDCY410K5H5

STANDARD FEATURES

- ➔ Safety features include LED work light package, alarm system, reverse camera, object detection system and a dry chemical fire suppression system
- ➔ Components from brands you know and trust including Cummins, Dana, Kessler, and Parker
- ➔ Powered Pile Slope and vertical twist-lock on the spreader
- ➔ Elevated Cab

90,390 lbs

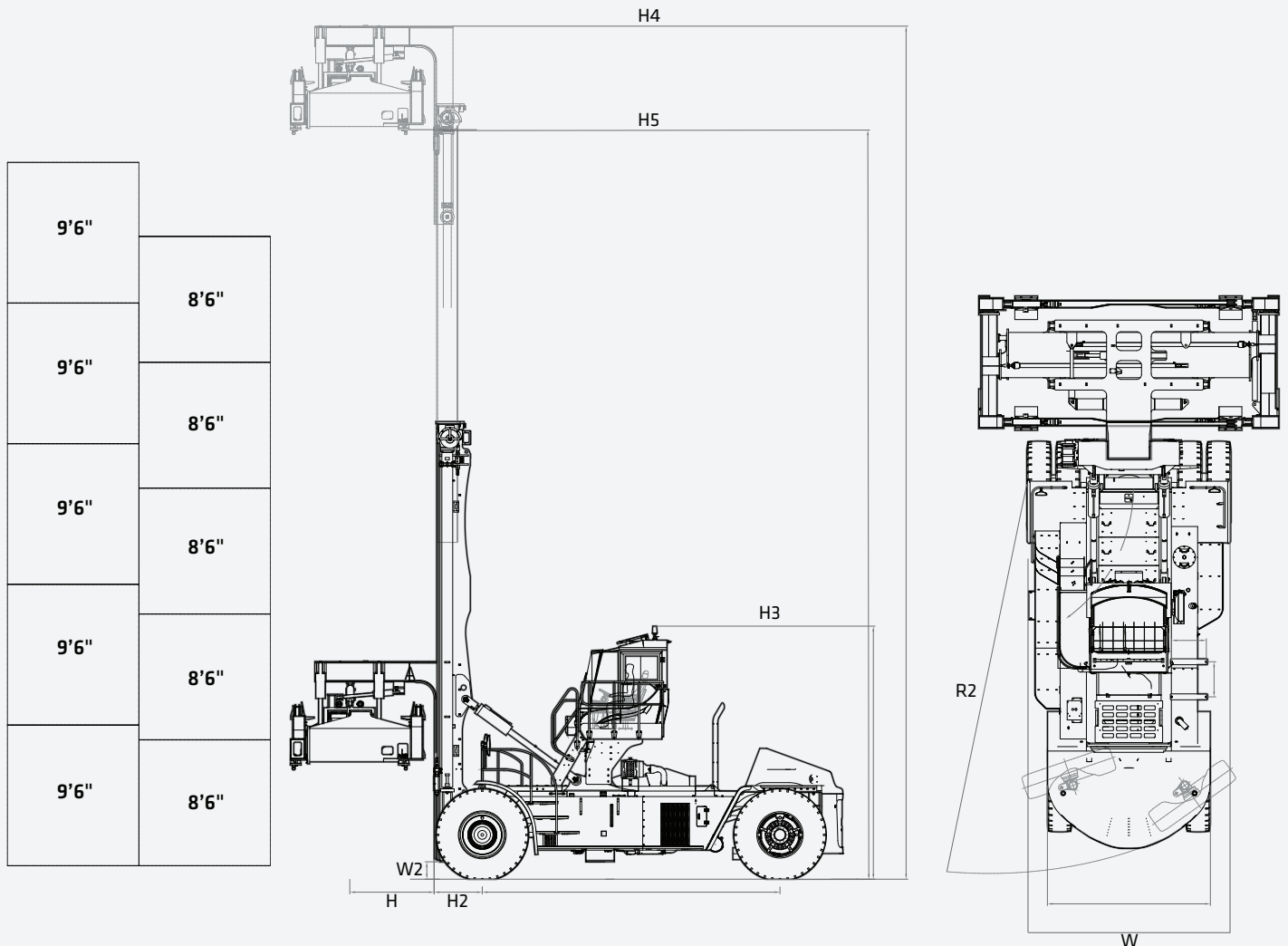
Max. Load

19' 8"

Wheelbase

5 (8' 6" / 9' 6")

Stacking Height



STANDARD AND OPTIONAL EQUIPMENT

s = standard / o = optional

SDCY410K5H4	ENGINE
s	Cummins QSL9 Diesel Engine with 350HP
s	Tier 4 Final EPA Emissions Compliant
s	24V, 100A Alternator
s	High Intake, Long Life Air Filter w/ Safety Element
s	Automatic Fire Extinguisher
s	500 Hour Oil Maintenance Interval
o	Engine Block Heater
DRIVETRAIN	
s	Dana HR3600 Transmission
s	3 FWD & 3 REV Gears
s	Kessler D102 Planetary Drive Axle w/ Wet Brakes
s	18.00 x 33 36 Ply Drive and Steer Pneumatic Tires
HYDRAULIC SYSTEM	
s	Efficient Load Sensing Hydraulic System
s	Optimized Automatic Throttle Up During Lifting Operations
s	SDJ450H 20'/40' Container Spreader for Single Stack ISO Containers
s	Spreader Equipped with Rotation and Powered Pile Slope
s	Wide Twist Lock Spreader for 8'6" and 9'6" Wide Containers
s	Side Shift up to 12" in Both Directions
s	Hydraulic Accumulator on Lift Circuit
s	Spreader Twist Lock Indicator Lights
OPERATOR'S STATION	
s	Enclosed High Visibility Cabin
s	High Mounted Cabin
s	Mechanical Full Suspension Cloth Seat (Grammer)
o	Air Ride, Full Suspension Cloth Seat (Grammer)
s	Ergonomic Multi-Function Joy Stick
s	Intuitive Display Panel
s	Steering Wheel w/ Spinner Knob
s	24V to 12V DC/DC converter
s	Rubber Floor Mat
s	Operator Presence and Restraint System
s	Rubber Mount Isolators to Reduce Cabin Vibrations



*Warranty applies to 2023 Forklift, Container Handler and Reach Stacker models only.

STANDARD AND OPTIONAL EQUIPMENT

s = standard / o = optional

SDCY410K5H4 OPERATOR'S STATION (CONTINUED)	
s	Automatic Climate Control with A/C and Heat
s	Reverse Camera w/ 7" Display
s	Object Detection Sensor up to 10' in Reverse Direction
o	Object Detection Sensor up to 16' in Reverse Direction
s	Telescoping and Tilting Steering Column
s	Front, Top and Rear Wipers
s	Recirculation Fan
s	Top Sun Shade
o	Training Seat
o	Additional Hour Meter (Located in Dash)
o	Reading Light
o	12V - 10A Power Supply
s	Radio System (Includes Radio, Speakers and Antenna)
o	Auxiliary Equipment Mounting Shelf
ELECTRICAL	
s	Automatic Greasing Systems for Spreader and Truck
s	Locking Fuel Cap
o	Cold Climate System: For Temperatures Down to -22°F
o	Empty Seat Shut Down (Factory Preset is 15 Minutes)
s	Lockable Battery Disconnect
s	Operator, Service and Parts Manuals (English)
s	Electric Horn
s	Wide Angle Mirrors
o	Twist Lock Counter
s	2 Front Facing Fender Mounted LED Lights
s	4 Forward Facing Cabin Mounted LED Work Lights
s	2 Rear Facing Mast Mounted LED Lights
s	2 Rear Facing Counterweight Mounted LED Lights
s	4 Spreader Mounted LED Lights
s	Indicator and Hazard lights
s	Rotating Amber Beacon on Boom

